

Highlights

Five out of six focus utilization metrics present a decrease in volumes from December 2025 to January 2026. Psychiatric admissions are the only metric with a slight increase in volumes with a 2% increase compared to the previous month. Observations admissions saw the biggest dip in number with a 13% decline, followed by ambulatory surgeries with a -10% change. Emergency Department visits are closely behind with -9% change, and acute care admissions and civil commitment admissions with -2% change each respectively (see Fig. 1 below).

Fig. 1: DC Hospitals Percentage Change, December 2025 - January 2026

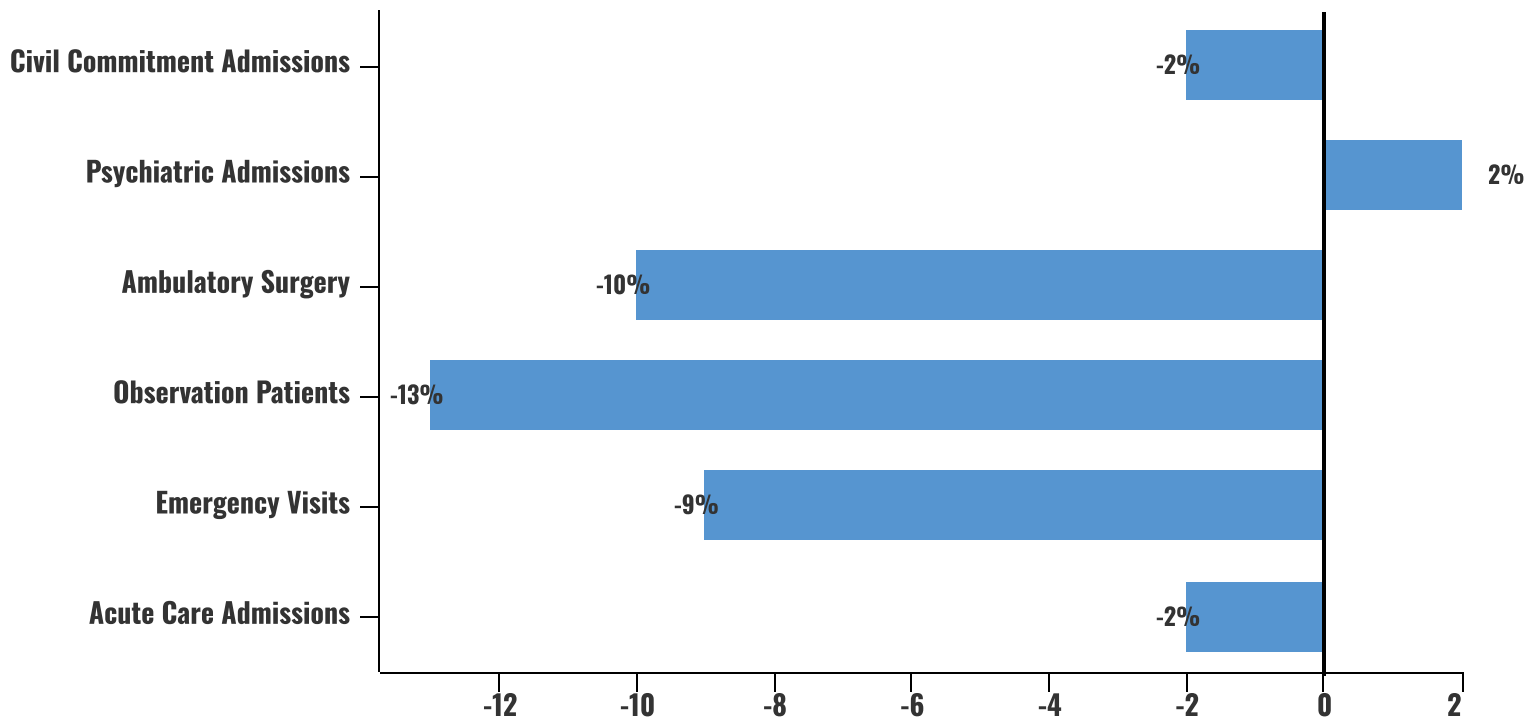


Table of Contents

Admissions	3
Table 1: Acute Care Hospitals – Current Admissions Compared to Previous Intervals.....	3
Table 2: Acute Care Hospitals – Admissions Previous 15 Months.....	3
Chart 1: Acute Care Hospitals – Aggregate Admissions Most Recent 15 Months.....	3
Table 3: Specialty Care Hospitals – Current Admissions Compared to Previous Intervals.....	4
Table 4: Specialty Care Hospitals – Admissions Previous 15 Months by Hospital.....	4
Chart 2: Specialty Care Hospitals – Aggregate Admissions Most Recent 15 Months.....	4
Patient Days	5
Table 5: Patient Days for Acute Care and Specialty Care Hospitals-Current Compared to Previous Intervals.....	5
Psychiatric Admissions and Patient Days	6
Table 6: Psychiatric Admissions and Patient Days Current Compared to Previous Intervals.....	6
Table 7: Psychiatric Admissions Previous 15 Months by Hospital.....	7
Chart 3: Acute Care Hospitals and Psychiatric Institutions - Psychiatric Admissions Aggregate Most Recent 15 Months....	7
Table 8: Civil Commitment Admissions – Admissions Previous 15 Months by Hospital.....	8
Chart 4: Civil Commitment Admissions – Aggregate Admissions Most Recent 15 Months.....	8
Rehabilitation Admissions and Patient Days	9
Table 9: Rehabilitation Admissions and Patient Days Current Compared with Previous Intervals	9
Skilled Nursing Facility Admissions and Patient Days	9
Table 10: SNF Admissions and Patient Days Current Compared with Previous Intervals	9
Newborn and Neonatal ICU Data: Admissions and Patient Days	10
Table 11: Newborn Admissions and Patient Days – Current Compared to Previous Intervals.....	10
Table 12: Newborn Admissions by Hospital Previous 15 Months.....	10
Chart 5: Newborn Admissions – Most Recent 15 Months.....	10
Table 13: Neonatal ICU Admissions and Patient Days – Current Compared to Previous Intervals.....	11
Table 14: Neonatal Admissions by Hospital Previous 15 Months.....	11
Chart 6: Neonatal Admissions Aggregate Most Recent 15 Months.....	11
Emergency Department Visits	12
Table 15: Emergency Department Visits – Current Compared to Previous Intervals.....	12
Table 16: Emergency Department Visits by Hospital Previous 15 Months.....	12
Chart 7: Emergency Department Visits Aggregate – Most Recent 15 Months.....	12
Ambulatory Surgeries	13
Table 17: Ambulatory Surgeries by Hospital Current Compared with Previous Intervals	13
Observation Patients	13
Table 18: Observation Admissions by Hospital Current Compared with Previous Intervals	13
Chart 8: Observation Patient Admissions Aggregate – Most Recent 15 Months.....	13
Average Daily Census by Hospital by Service	14

Admissions

Note: In this section, “Admissions” excludes newborns and SNF patients

Table 1: Acute Care Hospitals - Current Admissions Compared to Previous Intervals

	CURRENT MONTH		LAST 3 MONTHS		LAST 12 MONTHS	
	Actual This Year	% Change From Last Year	Average This Year	% Change From Last Year	Average This Year	% Change From Last Year
ADMISSIONS						
Acute						
Cedar Hill Regional Medical Center	391		385		267	
Children's National Hospital	1,120	-6.43	1,138	-7.10	1,107	-5.28
George Washington University Hospital	1,314	-4.78	1,312	-1.97	1,352	0.31
Howard University Hospital	480	-19.46	471	-15.38	513	-10.01
MedStar Georgetown University Hospital	1,476	7.58	1,408	7.81	1,394	7.63
MedStar Washington Hospital Center	2,503	-2.64	2,443	-2.89	2,484	-0.05
Sibley Memorial Hospital	937	-14.27	942	-11.36	975	-6.52
United Medical Center					31	-87.38
ACUTE TOTAL	8221	-2.65	8100	-1.50	8122	-0.39

Table 2: Acute Care Hospitals – Admissions Previous 15 Months

Acute Care Hospital Admissions - previous 15 months															
	Nov-24	Dec-24	Jan-25	Feb-25	Mar-25	Apr-25	May-25	Jun-25	Jul-25	Aug-25	Sep-25	Oct-25	Nov-25	Dec-25	Jan-26
Cedar Hill Regional Medical Center							262	307	342	324	336	388	375	389	391
Children's National Hospital	1205	1274	1197	1048	1203	1103	1119	1083	1053	1018	1119	1125	1100	1195	1120
George Washington University Hospital	1311	1325	1380	1229	1353	1364	1357	1389	1430	1419	1350	1391	1277	1346	1314
Howard University Hospital	515	560	596	503	527	502	492	482	546	520	585	580	421	513	480
MedStar Georgetown University Hospital	1280	1266	1372	1270	1342	1383	1375	1403	1419	1395	1452	1469	1301	1447	1476
MedStar Washington Hospital Center	2445	2531	2571	2363	2563	2536	2508	2569	2473	2498	2434	2539	2304	2522	2503
Sibley Memorial Hospital	1010	1084	1093	926	1024	1016	1027	980	928	1010	967	992	892	996	937
United Medical Center	205	213	236	202	167	1	0								
TOTAL	7971	8253	8445	7541	8179	7905	8140	8213	8191	8184	8243	8484	7670	8408	8221
					lowest			highest							

Chart 1: Acute Care Hospitals – Aggregate Admissions Most Recent 15 Months

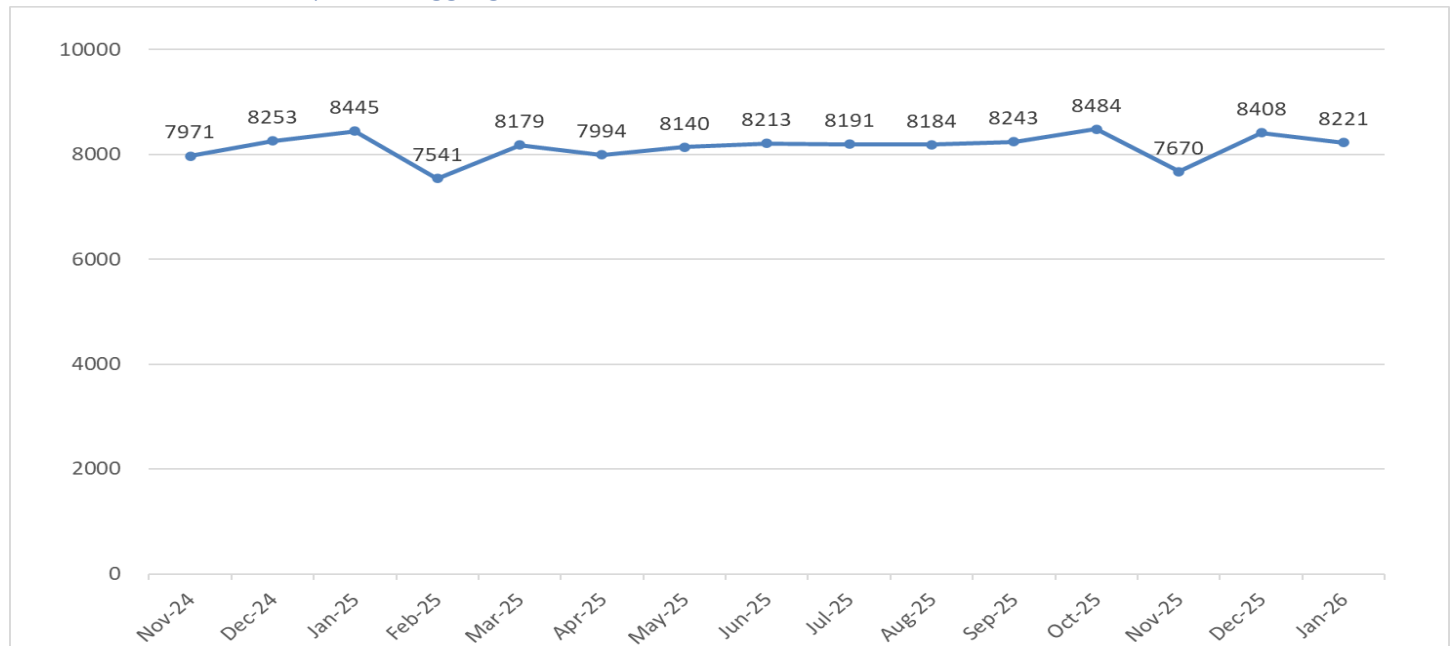


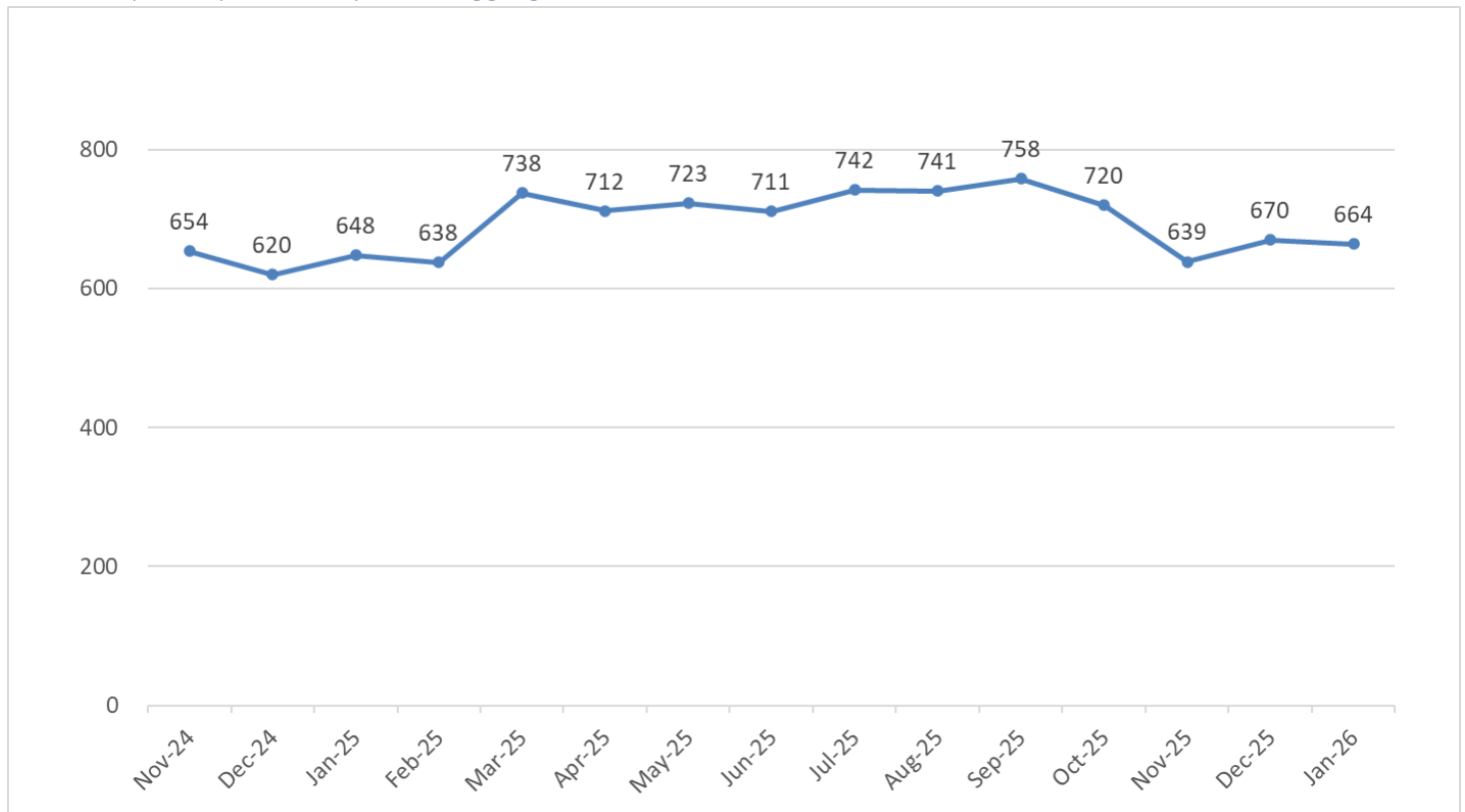
Table 3: Specialty Care Hospitals – Current Admissions Compared to Previous Intervals

Speciality	CURRENT MONTH		LAST 3 MONTHS		LAST 12 MONTHS	
	Actual This Year	% Change From Last Year	Average This Year	% Change From Last Year	Average This Year	% Change From Last Year
ADMISSIONS						
BridgePoint Hospital -Capitol Hill	35	2.94	37	-17.29	42	-1.97
BridgePoint Hospital -National Harborside	35	-20.45	33	-10.00	39	7.93
MedStar National Rehabilitation Hospital	170	8.28	170	11.33	161	4.36
Psychiatric Institute of Washington	400	3.63	384	1.95	428	12.73
Saint Elizabeths Hospital	24	-11.11	34	12.22	35	5.76
ACUTE TOTAL	664	2.47	658	2.65	705	9.14

Table 4: Specialty Care Hospitals – Admissions Previous 15 Months by Hospital

Specialty Hospital Admissions - previous 15 months																
	Nov-24	Dec-24	Jan-25	Feb-25	Mar-25	Apr-25	May-25	Jun-25	Jul-25	Aug-25	Sep-25	Oct-25	Nov-25	Dec-25	Jan-26	
MedStar National Rehabilitation Hospital	148	154	157	146	168	169	159	161	144	141	159	179	158	183	170	
Psychiatric Institute of Washington	384	360	386	381	422	428	454	446	475	469	481	428	373	379	400	
Saint Elizabeths Hospital	31	32	27	26	37	36	31	34	42	37	41	37	37	40	24	
BridgePoint Hospital -Capitol Hill	55	44	34	49	57	43	41	38	46	44	34	36	40	35	35	
BridgePoint Hospital -National Harborside	36	30	44	36	54	36	38	32	35	50	43	40	31	33	35	
TOTAL	654	620	648	638	738	712	723	711	742	741	758	720	639	670	664	
					lowest			highest								

Chart 2: Specialty Care Hospitals – Aggregate Admissions Most Recent 15 Months



Patient Days

Note: In this section, "Patient Days" excludes newborns and SNF patients

Table 5: Patient Days for Acute Care and Specialty Care Hospitals – Current Compared with Previous Intervals

	CURRENT MONTH		LAST 3 MONTHS		LAST 12 MONTHS	
	Actual This Year	% Change From Last Year	Average This Year	% Change From Last Year	Average This Year	% Change From Last Year
PATIENT DAYS						
Acute						
Cedar Hill Regional Medical Center	1,952		1,841		1025	
Children's National Hospital	6,289	-3.19	6,208	-9.28	6,243	-6.83
George Washington University Hospital	8,879	7.75	8,824	6.33	8,342	1.74
Howard University Hospital	3,023	-13.92	2,945	-9.36	3,063	-8.30
MedStar Georgetown University Hospital	12,174	7.06	11,567	3.93	11,329	5.11
MedStar Washington Hospital Center	20,035	-4.60	18,536	-8.95	18,777	-5.20
Sibley Memorial Hospital	4,541	-7.97	4,317	-9.44	4,442	0.43
United Medical Center					252	-84.35
ACUTE TOTAL	56893	0.33	54239	-3.30	53472	-2.53
BridgePoint Hospital -Capitol Hill	1,106	7.80	1,086	1.09	1,102	1.64
BridgePoint Hospital -National Harborside	1,114	-0.18	1,016	4.78	1,114	7.04
MedStar National Rehabilitation Hospital	2,851	7.02	2,759	1.12	2,747	1.13
Psychiatric Institute of Washington	3,563	24.19	3,334	26.15	3,312	12.39
Saint Elizabeths Hospital	8,162	-1.69	8,165	0.79	8,127	-0.32
SPECIALTY TOTAL	16796	5.13	16360	5.44	16401	2.89
GRAND TOTAL	73689	0.86	70599	-1.40	69873	-1.31

Psychiatric Admissions and Patient Days

Table 6: Psychiatric Admissions and Patient Days Current Compared to Previous Intervals

	CURRENT MONTH		LAST 3 MONTHS		LAST 12 MONTHS	
	Actual This Year	% Change From Last Year	Average This Year	% Change From Last Year	Average This Year	% Change From Last Year
PSYCH ADMISSIONS						
Acute						
Cedar Hill Regional Medical Center	51		47		29	
Children's National Hospital	36	-38.98	35	-35.37	48	-18.47
George Washington University Hospital	23	-32.35	23	-34.62	28	-31.39
Howard University Hospital	21	-22.22	23	-12.66	25	-16.25
MedStar Georgetown University Hospital	41	32.26	36	14.89	35	14.05
MedStar Washington Hospital Center	112	4.67	114	-1.16	111	6.45
Sibley Memorial Hospital	40	-21.57	49	1.38	49	-2.67
United Medical Center					30	-53.31
ACUTE TOTAL	324	-10.74	327	-11.30	355	-6.36
Specialty						
Psychiatric Institute of Washington	400	3.63	384	1.95	428	12.73
Saint Elizabeths Hospital	24	-11.11	34	12.22	35	5.76
SPECIALTY TOTAL	424	2.66	418	2.70	463	12.17
GRAND TOTAL	748	-3.61	745	-3.96	818	3.30
PSYCH PATIENT DAYS						
Acute						
Cedar Hill Regional Medical Center	316		321		173	
Children's National Hospital	502	-6.17	558	0.54	547	-6.53
George Washington University Hospital	89	-39.04	111	-32.45	126	-27.93
Howard University Hospital	109	-33.54	108	-20.78	130	-10.33
MedStar Georgetown University Hospital	215	45.27	161	11.26	158	15.36
MedStar Washington Hospital Center	831	0.48	833	4.74	821	4.91
Sibley Memorial Hospital	240	-31.82	287	-15.02	306	-13.69
United Medical Center					133	-51.31
ACUTE TOTAL	2302	-3.88	2379	-0.01	2394	-2.40
Specialty						
Psychiatric Institute of Washington, D.C.	3,563	24.19	3,334	26.15	3,312	12.39
Saint Elizabeths Hospital	8,162	-1.69	8,165	0.79	8,127	-0.32
SPECIALTY TOTAL	11725	4.96	11498	7.03	11439	3.06
GRAND TOTAL	14027	3.40	13877	5.75	13833	2.07

Table 7: Psychiatric Admissions Previous 15 Months by Hospital

Psychiatric Admissions - previous 15 months															
	Nov-24	Dec-24	Jan-25	Feb-25	Mar-25	Apr-25	May-25	Jun-25	Jul-25	Aug-25	Sep-25	Oct-25	Nov-25	Dec-25	Jan-26
Cedar Hill Regional Medical Center							25	33	38	28	34	41	51	39	51
Children's National Hospital	53	52	59	43	74	60	54	63	51	46	35	42	38	32	36
George Washington University Hospital	34	36	34	29	33	28	27	27	29	26	34	40	16	29	23
Howard University Hospital	28	24	27	18	28	31	18	23	30	20	34	28	23	25	21
MedStar Georgetown University Hospital	28	35	31	30	39	37	32	34	33	34	29	38	37	30	41
MedStar Washington Hospital Center	118	121	107	111	116	113	116	105	98	104	113	118	122	108	112
Sibley Memorial Hospital	52	42	51	37	49	53	53	36	49	52	50	58	53	54	40
United Medical Center	63	57	54	50	40	0	0								
Psychiatric Institute of Washington	384	360	386	381	422	428	454	446	475	469	481	428	373	379	400
Saint Elizabeths Hospital	31	32	27	26	37	36	31	34	42	37	41	37	37	40	24
TOTAL	791	759	776	725	838	786	810	801	845	816	851	830	750	736	748
					lowest			highest							

Chart 3: Acute Care Hospitals and Psychiatric Institutions– Psychiatric Admissions Aggregate Most Recent 15 Months.

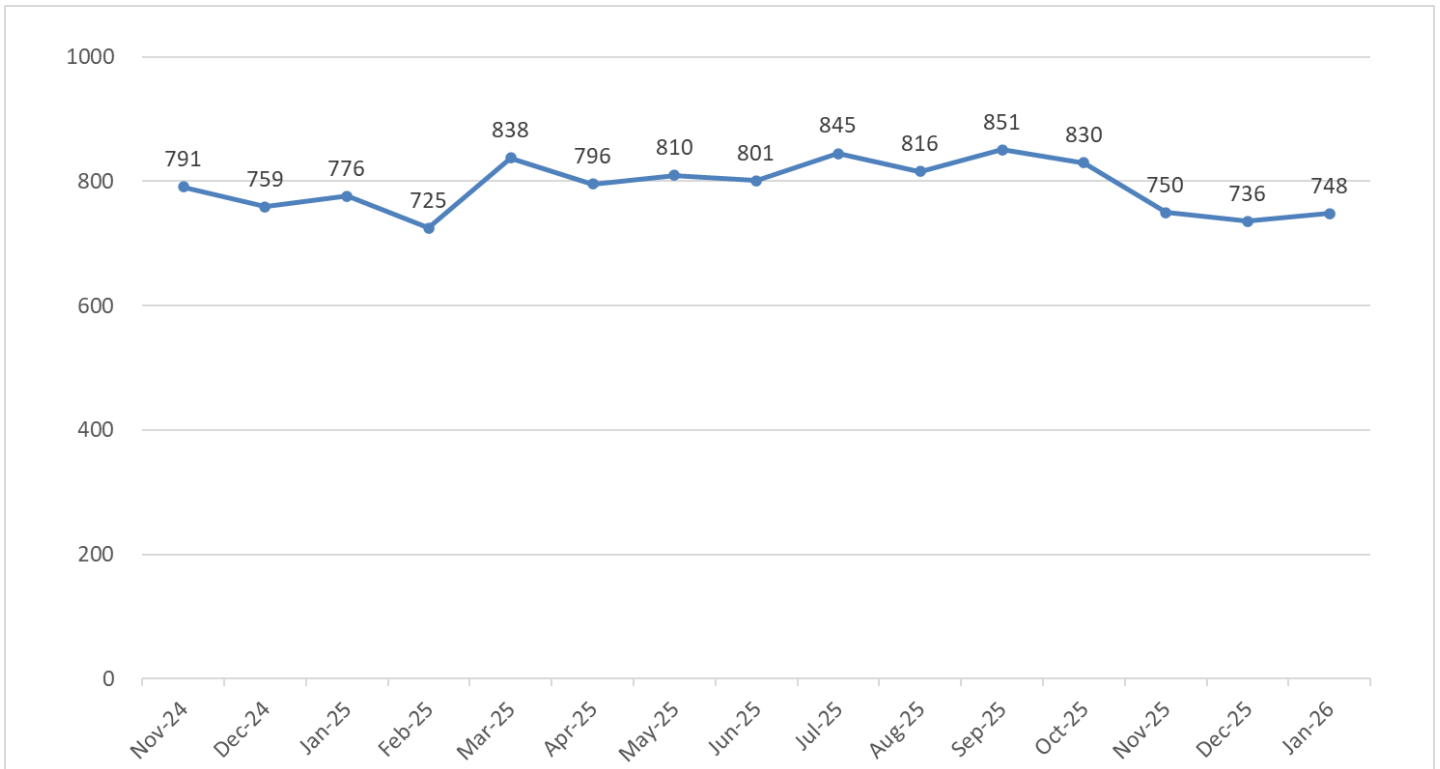
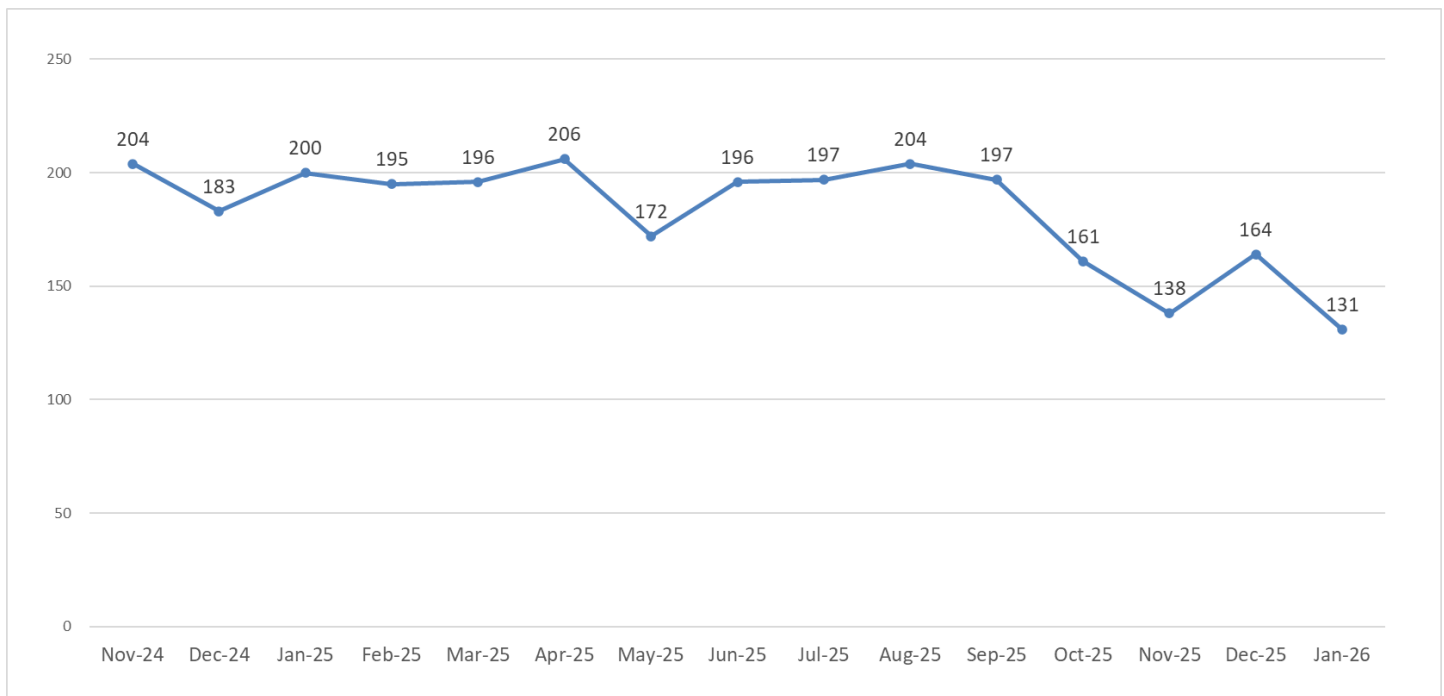


Table 8: Civil Commitment Admissions – Admissions Previous 15 Months by Hospital

Civil Commitment Admissions - previous 15 months															
	Nov-24	Dec-24	Jan-25	Feb-25	Mar-25	Apr-25	May-25	Jun-25	Jul-25	Aug-25	Sep-25	Oct-25	Nov-25	Dec-25	Jan-26
Cedar Hill Regional Medical Center						0	0	0	0	0	0	1	0	1	0
MedStar Washington Hospital Center	37	55	43	46	45	48	35	36	43	39	44	45	43	49	43
Psychiatric Institute of Washington, D.C	135	102	131	124	132	156	136	160	154	164	153	114	94	113	85
Saint Elizabeth's Hospital	2	2	2	0	4	2	1	0	0	1	0	1	1	1	3
United Medical Center	30	24	24	25	15	0									
TOTAL	204	183	200	195	196	206	172	196	197	204	197	161	138	164	131
						lowest			highest						

Chart 4: Civil Commitment Admissions – Aggregate Admissions Most Recent 15 Months



Rehabilitation Admissions and Patient Days

Table 9: Rehabilitation Admissions and Patient Days Current Compared with Previous Intervals

	CURRENT MONTH		LAST 3 MONTHS		LAST 12 MONTHS	
	Actual This Year	% Change From Last Year	Average This Year	% Change From Last Year	Average This Year	% Change From Last Year
REHAB ADMISSIONS						
Acute						
George Washington University Hospital	34	-8.11	33	-3.88	32	6.87
Subacute Rehab						
MedStar National Rehabilitation Hospital	170	8.28	170	11.33	161	4.36
GRAND TOTAL	204	5.15	203	8.54	194	4.77
REHAB PATIENT DAYS						
Acute						
George Washington University Hospital	430	5.91	424	8.44	395	4.25
Subacute Rehab						
MedStar National Rehabilitation Hospital	2,851	7.02	2,759	1.12	2,747	1.13
GRAND TOTAL	3281	6.87	3183	2.04	3141	1.51

Skilled Nursing Facility Admissions and Patient Days*

Table 10: SNF Admissions and Patient Days Current Compared with Previous Intervals

	CURRENT MONTH		LAST 3 MONTHS		LAST 12 MONTHS	
	Actual This Year	% Change From Last Year	Average This Year	% Change From Last Year	Average This Year	% Change From Last Year
SNF ADMISSIONS						
Acute						
Sibley Memorial Hospital	22	-35.29	25	-23.23	31	19.43
ACUTE TOTAL	22	-35.29	25	-23.23	31	19.43
Specialty						
BridgePoint Hospital -Capitol Hill	0	-100.00	7	-36.36	16	-11.89
BridgePoint Hospital -National Harborside	0	-100.00	16	37.14	20	37.83
SPECIALTY TOTAL	0	-100.00	23	1.47	36	10.03
GRAND TOTAL	22	-62.07	48	-13.17	68	14.18
SNF PATIENT DAYS						
Acute						
Sibley Memorial Hospital	640	-11.36	636	-4.75	701	24.60
ACUTE TOTAL	640	-11.36	636	-4.75	701	24.60
Specialty						
BridgePoint Hospital -Capitol Hill	0	-100.00	3,324	-1.90	3,233	-3.82
BridgePoint Hospital -National Harborside	0	-100.00	3,535	-0.06	3,571	-2.94
SPECIALTY TOTAL	0	-100.00	6859	-0.96	6803	-3.36
GRAND TOTAL	640	-91.71	7495	-1.29	7504	-1.29

- BridgePoint Capitol Hill and National Harborside status changed as of December 2025 and their skilled nursing facility data was not included in this report.

Newborn and Neonatal ICU Data: Admissions and Patient Days

Table 11: Newborn Admissions and Patient Days– Current Compared to Previous Intervals

	CURRENT MONTH		LAST 3 MONTHS		LAST 12 MONTHS	
	Actual This Year	% Change From Last Year	Average This Year	% Change From Last Year	Average This Year	% Change From Last Year
NEWBORN ADMISSIONS						
Cedar Hill Regional Medical Center	17		10		7	
George Washington University Hospital	156	23.81	158	12.29	144	-2.09
Howard University Hospital	38	-38.71	43	-28.18	52	-26.89
MedStar Georgetown University Hospital	77	11.59	70	-3.69	70	0.84
MedStar Washington Hospital Center	227	-18.64	228	-17.29	251	-12.22
Sibley Memorial Hospital	268	-14.92	276	-9.60	282	-11.84
ACUTE TOTAL	783	-7.99	786	-8.07	807	-9.82
NEWBORN PATIENT DAYS						
Cedar Hill Regional Medical Center	44		39		25	
George Washington University Hospital	311	42.01	312	16.85	273	-4.21
Howard University Hospital	160	-42.45	224	-5.88	257	-6.88
MedStar Georgetown University Hospital	192	20.00	176	2.32	177	5.14
MedStar Washington Hospital Center	1,008	-19.42	1,140	-12.26	1,188	-7.07
Sibley Memorial Hospital	754	-16.13	804	-5.04	780	-12.53
ACUTE TOTAL	2469	-12.04	2696	-4.53	2700	-6.86

Table 12: Newborn Admissions by Hospital Previous 15 Months

Newborn Admissions - previous 15 months															
	Nov-24	Dec-24	Jan-25	Feb-25	Mar-25	Apr-25	May-25	Jun-25	Jul-25	Aug-25	Sep-25	Oct-25	Nov-25	Dec-25	Jan-26
Cedar Hill Regional Medical Center							8	4	6	9	13	7	6	8	17
George Washington University Hospital	157	140	126	120	134	137	137	125	163	140	158	143	152	167	156
Howard University Hospital	68	51	62	58	51	41	59	47	65	61	62	54	43	49	38
MedStar Georgetown University Hospital	79	69	69	54	68	75	59	71	89	74	79	61	59	73	77
MedStar Washington Hospital Center	290	258	279	273	278	252	253	308	253	236	250	229	208	249	227
Sibley Memorial Hospital	303	299	315	281	284	278	290	267	277	312	284	285	267	294	268
TOTAL	897	817	851	786	815	783	806	822	853	832	846	779	735	840	783
					lowest			highest							

Chart 5: Newborn Admissions – Most Recent 15 Months

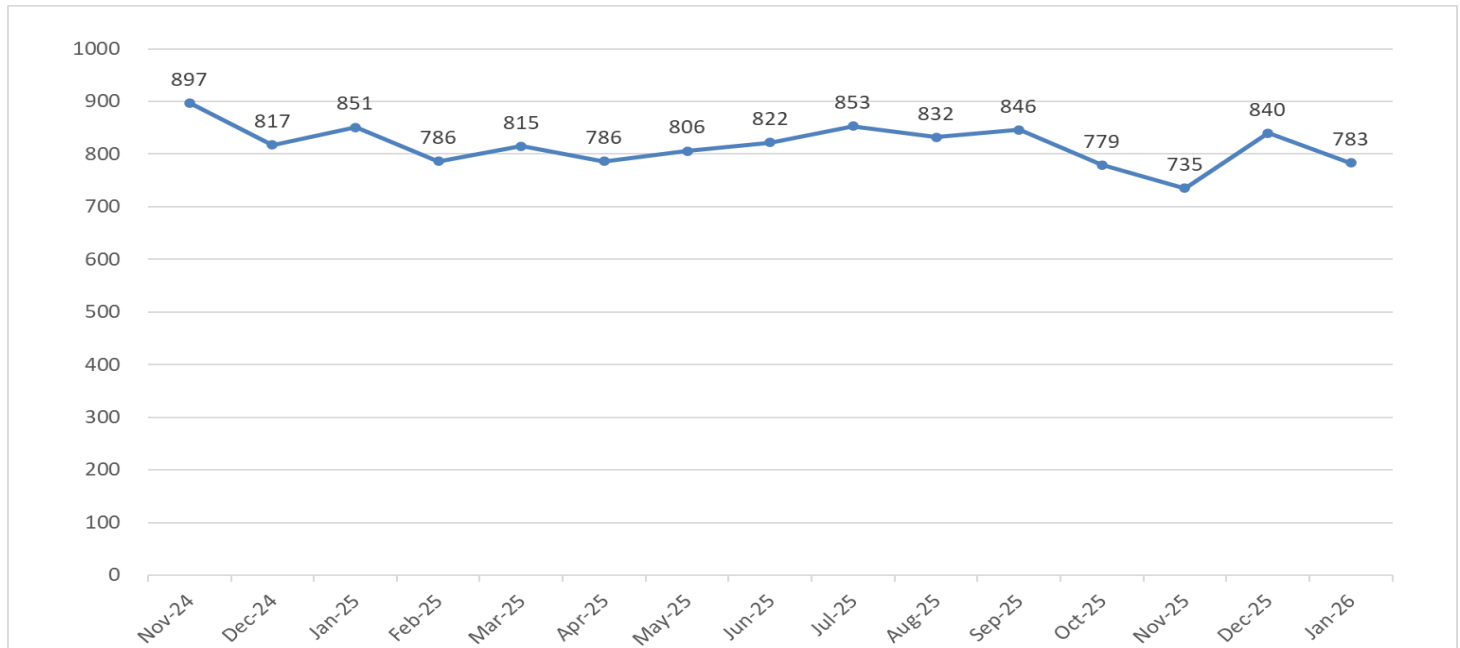


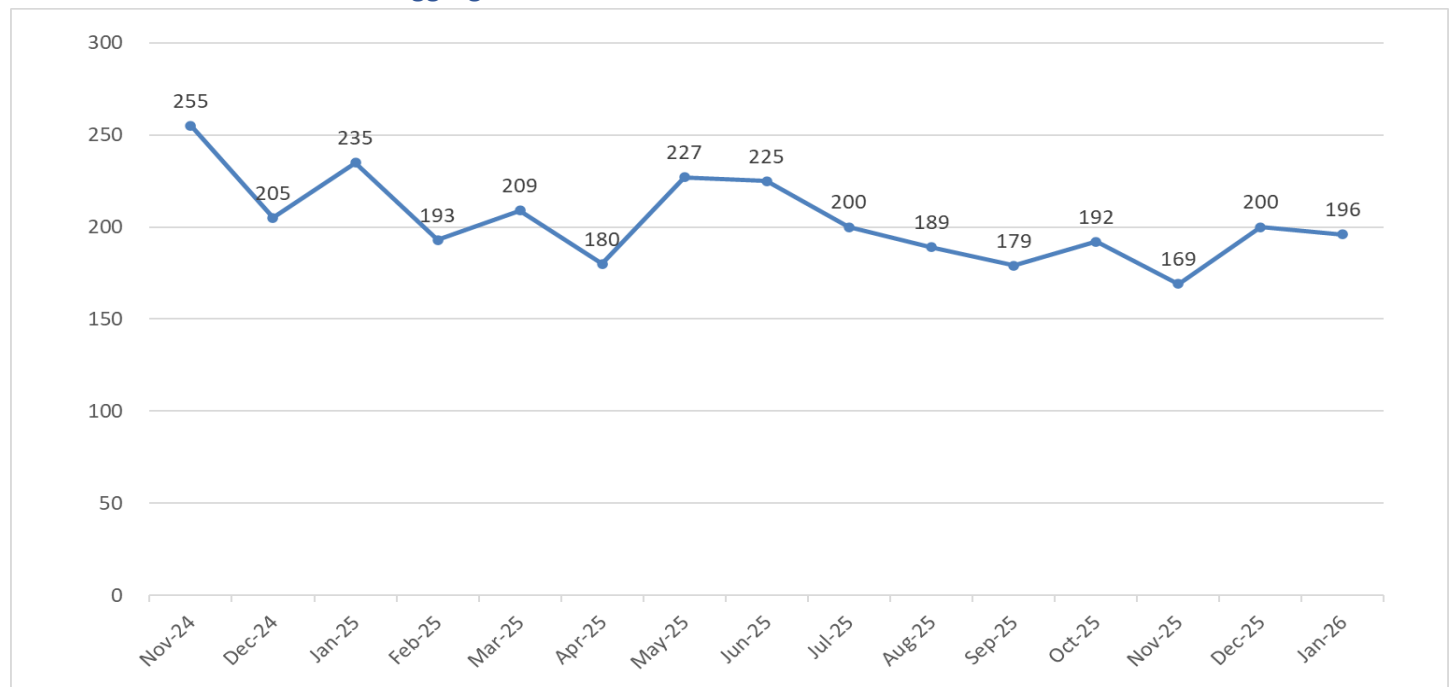
Table 13: Neonatal ICU Admissions and Patient Days– Current Compared to Previous Intervals

	CURRENT MONTH		LAST 3 MONTHS		LAST 12 MONTHS	
	Actual This Year	% Change From Last Year	Average This Year	% Change From Last Year	Average This Year	% Change From Last Year
NEONATAL ADMISSIONS						
Cedar Hill Regional Medical Center	0		2		2	
Children's National Hospital	81	-10.00	84	9.52	79	7.81
George Washington University Hospital	23	-20.69	18	-25.00	20	-25.71
Howard University Hospital	3	200.00	1	-33.33	3	-24.49
MedStar Georgetown University Hospital	37	0.00	30	14.10	27	11.19
MedStar Washington Hospital Center	52	-33.33	53	-48.70	65	-36.83
ACUTE TOTAL	196	-16.60	188	-18.71	197	-15.27
NEONATAL PATIENT DAYS						
Cedar Hill Regional Hospital	0		12		5	
Children's National Hospital	1,888	-3.23	1,900	-4.86	1,801	-9.68
George Washington University Hospital	957	184.82	583	29.65	412	-5.07
Howard University Hospital	25	-55.36	13	-57.45	34	-31.77
MedStar Georgetown University Hospital	630	-22.32	537	-33.53	647	-0.55
MedStar Washington Hospital Center	617	-22.88	667	-22.43	700	-14.05
ACUTE TOTAL	4117	4.12	3713	-10.46	3599	-8.73

Table 14: Neonatal Admissions by Hospital Previous 15 Months

Neonatal Admissions - previous 15 months															
	Nov-24	Dec-24	Jan-25	Feb-25	Mar-25	Apr-25	May-25	Jun-25	Jul-25	Aug-25	Sep-25	Oct-25	Nov-25	Dec-25	Jan-26
Cedar Hill Regional Medical Center							9	4	0	1	1	1	4	3	0
Children's National Hospital	74	67	90	78	82	62	85	75	82	88	64	83	74	98	81
George Washington University Hospital	29	14	29	24	16	18	11	23	26	21	22	22	15	16	23
Howard University Hospital	2	3	1	2	4	6	3	4	5	2	3	4	0	1	3
MedStar Georgetown University Hospital	19	22	37	23	21	25	25	29	28	24	32	32	22	30	37
MedStar Washington Hospital Center	131	99	78	66	86	69	94	90	59	53	57	50	54	52	52
TOTAL	255	205	235	193	209	180	227	225	200	189	179	192	169	200	196
					lowest			highest							

Chart 6: Neonatal Admissions Aggregate Most Recent 15 Months



Emergency Department Visits

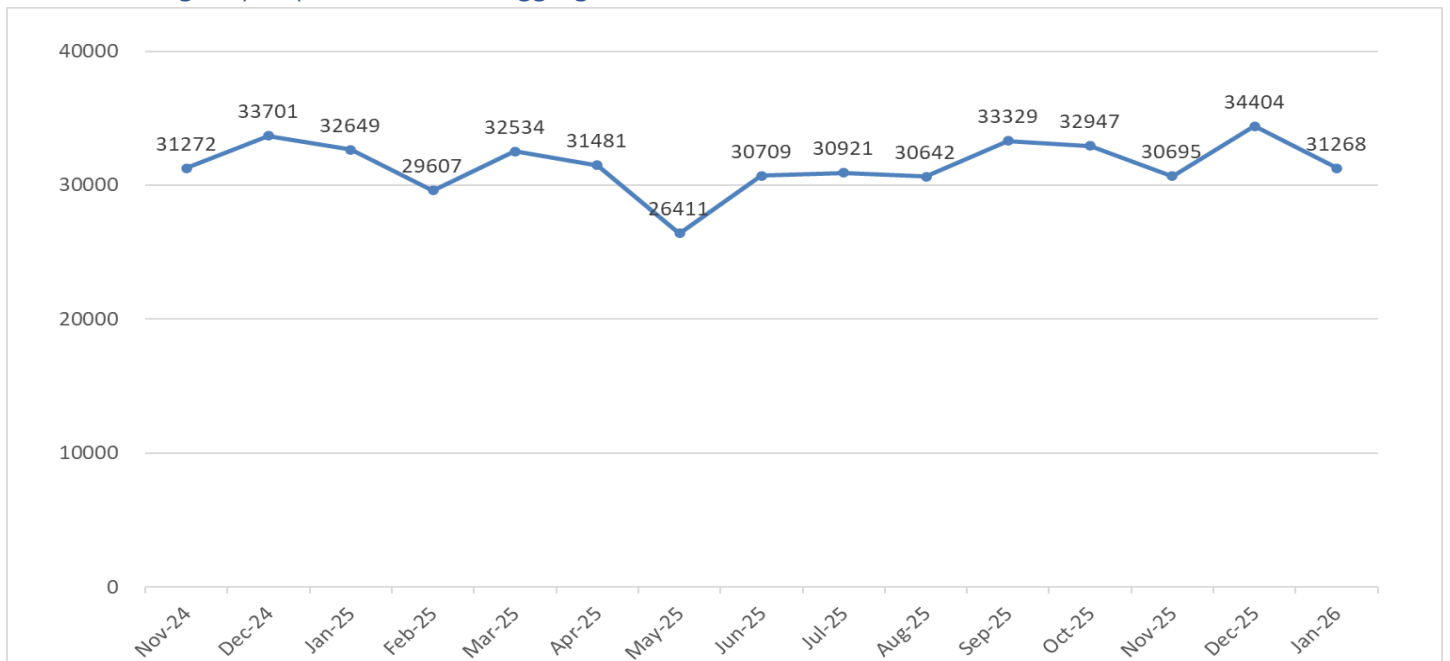
Table 15: Emergency Department Visits– Current Compared to Previous Intervals

	CURRENT MONTH		LAST 3 MONTHS		LAST 12 MONTHS	
	Actual This Year	% Change From Last Year	Average This Year	% Change From Last Year	Average This Year	% Change From Last Year
EMERGENCY DEPARTMENT VISITS						
Cedar Hill Regional Medical Center	3630		3899		2936	
Children's National Hospital	5,999	▼ -1.62	6,284	▼ -2.79	5,534	▼ -7.71
Children's National Hospital at CHRMC	919		1115		748	
Children's National Hospital at UMC					1,665	-20.44
George Washington University Hospital	4,563	5.97	4,529	3.78	4,350	0.57
Howard University Hospital	3,361	-12.72	3,456	-10.64	3,735	-5.17
MedStar Georgetown University Hospital	3,515	2.60	3,410	5.25	3,434	8.03
MedStar Washington Hospital Center	6,143	-10.39	6,212	-2.38	6,384	-0.21
Sibley Memorial Hospital	3,138	-2.76	3,218	-1.86	3,253	-1.58
United Medical Center					1,830	-36.71
ACUTE TOTAL	31268	▼ -4.23	32122	▼ -1.29	33867	5.43

Table 16: Emergency Department Visits by Hospital Previous 15 Months

Emergency Department Admissions - previous 15 months															
	Nov-24	Dec-24	Jan-25	Feb-25	Mar-25	Apr-25	May-25	Jun-25	Jul-25	Aug-25	Sep-25	Oct-25	Nov-25	Dec-25	Jan-26
Cedar Hill Regional Medical Center							3391	3299	3324	3667	3983	4071	3822	4244	3630
Children's National Hospital @ CHRMC							958	815	664	679	895	1050	967	1460	919
Children's National Hospital @ UMC	2084	2364	2061	2023	2153	820	0								
Children's National Hospital	6381	6913	6098	6011	6645	6208	622	5450	4689	4891	6911	6126	5844	7008	5999
George Washington University Hospital	4379	4406	4306	3633	3933	4272	4120	4244	4549	4639	4600	4622	4385	4638	4563
Howard University Hospital	3806	3944	3851	3640	3975	3964	3853	3680	3936	3835	3785	3780	3392	3614	3361
MedStar Georgetown University Hospital	3011	3283	3426	3166	3512	3387	3482	3433	3529	3474	3492	3500	3234	3481	3515
MedStar Washington Hospital Center	5755	6481	6855	5879	6705	6446	6664	6486	6745	6335	6256	6453	6065	6428	6143
Sibley Memorial Hospital	3174	3437	3227	2871	3093	3436	3321	3302	3485	3122	3407	3345	2986	3531	3138
United Medical Center	2682	2873	2825	2384	2518	587	0	0	0						
TOTAL	31272	33701	32649	29607	32534	29120	26411	30709	30921	30642	33329	32947	30695	34404	31268
					lowest			highest							

Chart 7: Emergency Department Visits Aggregate – Most Recent 15 Months



Ambulatory Surgeries

Table 17: Ambulatory Surgeries by Hospital Current Compared with Previous Intervals

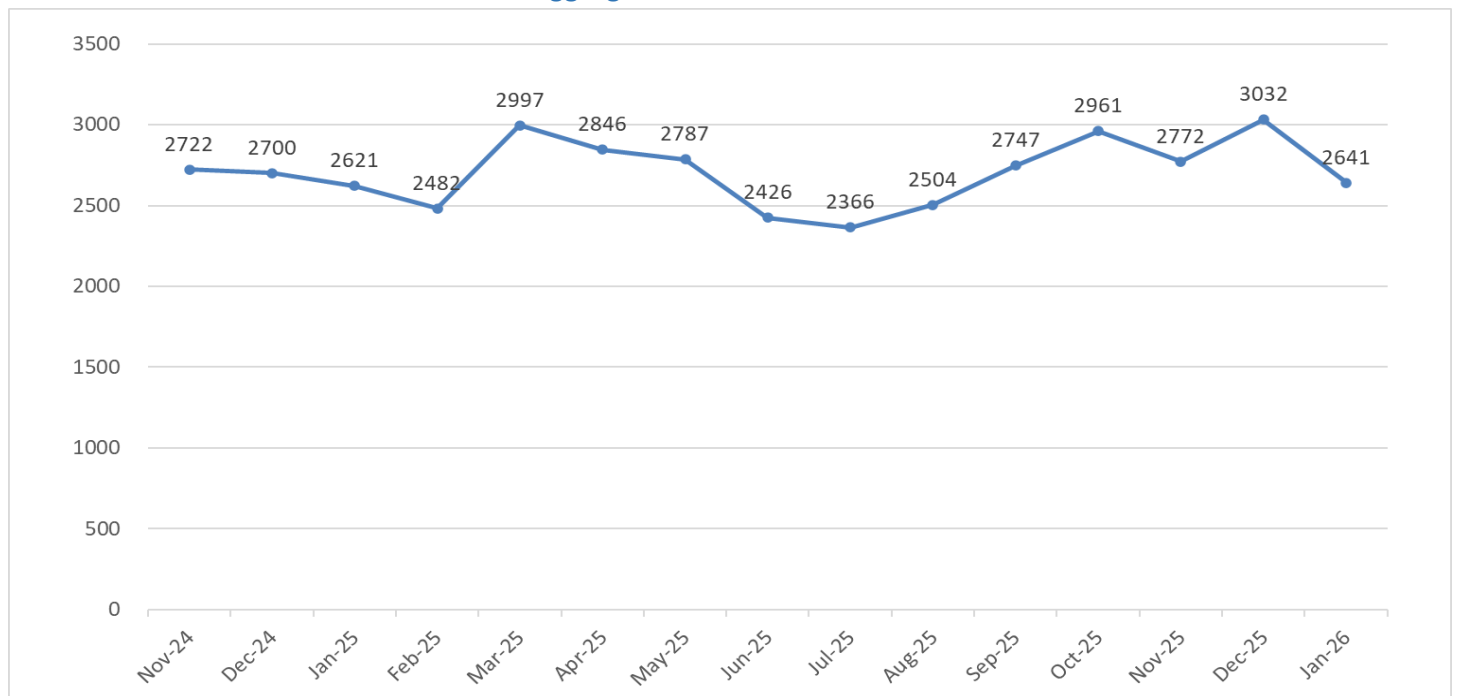
	CURRENT MONTH		LAST 3 MONTHS		LAST 12 MONTHS	
	Actual This Year	% Change From Last Year	Average This Year	% Change From Last Year	Average This Year	% Change From Last Year
AMBULATORY SURGERIES						
Cedar Hill Regional Medical Center	2		3		3	
Children's National Hospital	1,228	-7.74	1,309	4.77	1,346	1.78
George Washington University Hospital	862	-17.35	961	-12.43	1,047	-9.86
Howard University Hospital	348	-3.60	382	-13.11	441	-13.78
MedStar Georgetown University Hospital	857	3.75	882	7.91	869	7.50
MedStar Washington Hospital Center	815	-9.54	822	-6.63	898	-0.19
Sibley Memorial Hospital	710	-4.44	724	-4.23	762	1.24
United Medical Center					43	-52.79
ACUTE TOTAL	4822	-8.20	5083	-3.88	5410	-2.49

Observation Patients

Table 18: Observation Admissions by Hospital Current Compared with Previous Intervals

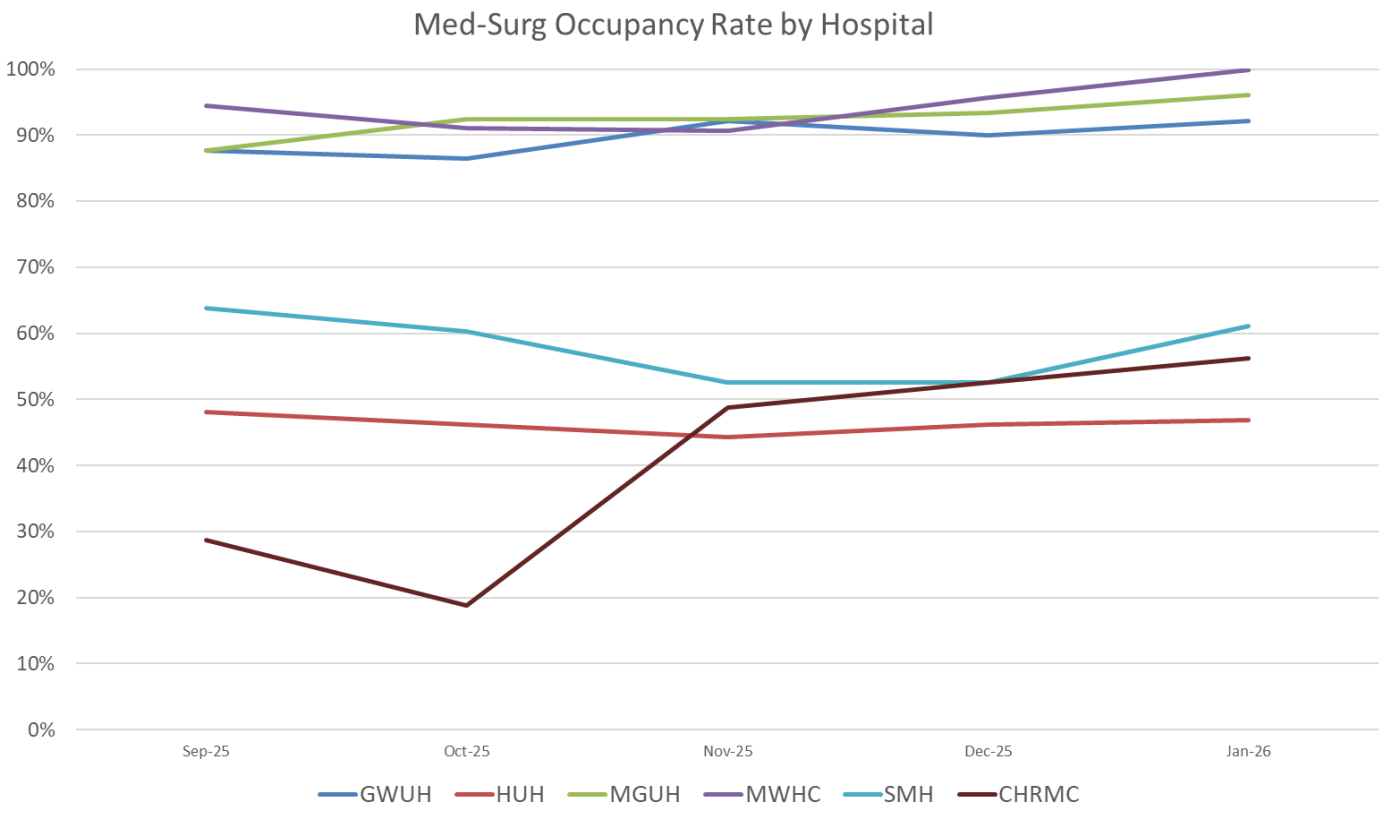
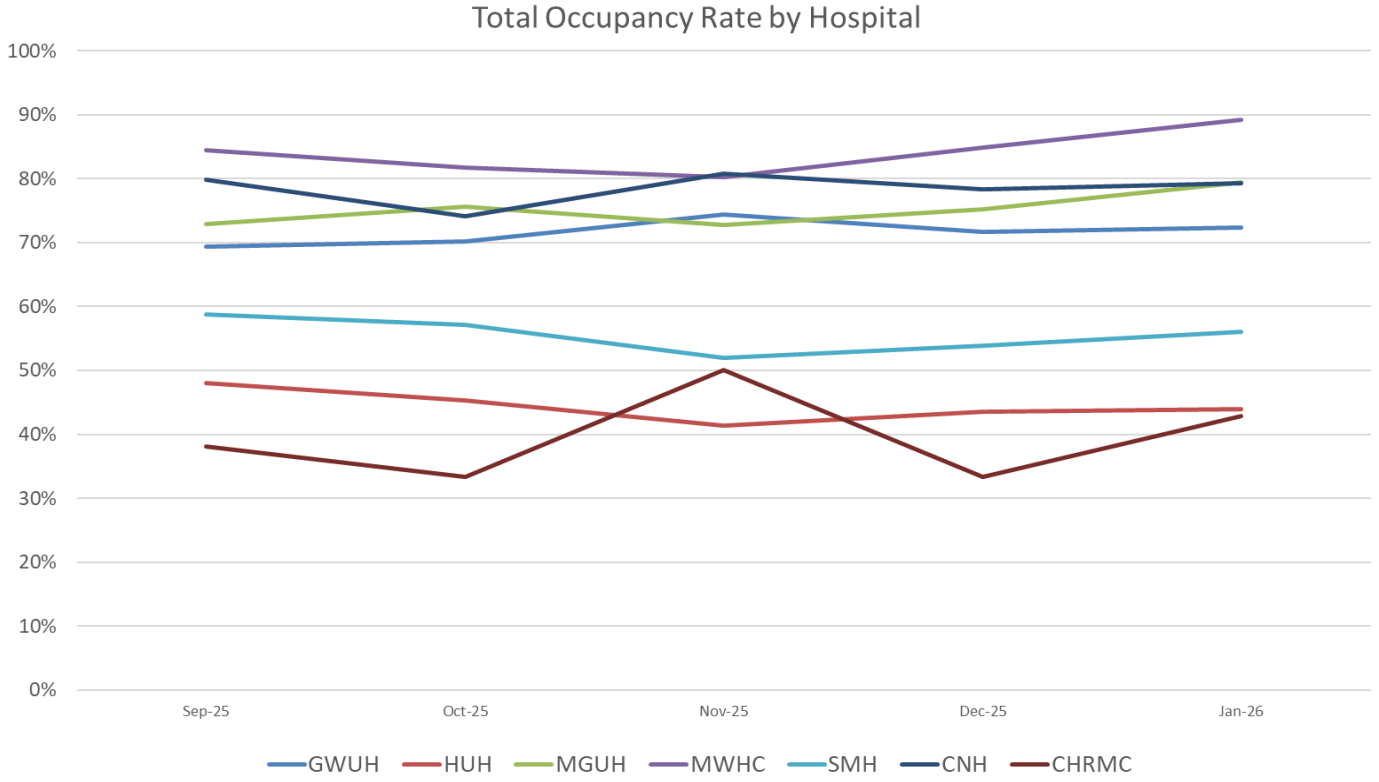
	Actual This Year	% Change From Last Year	Average This Year	% Change From Last Year	Average This Year	% Change From Last Year
	OBSERVATIONS PATIENTS					
Acute						
Cedar Hill Regional Medical Center	68		60		23	
Children's National Hospital	1,274	35.53	1,370	26.39	1,219	12.02
George Washington University Hospital	106	-0.93	106	11.93	104	7.84
Howard University Hospital	71	-12.35	85	-1.54	80	-13.50
MedStar Georgetown University Hospital	367	-6.62	393	11.86	393	12.98
MedStar Washington Hospital Center	527	-10.68	571	-1.72	598	4.04
Sibley Memorial Hospital	228	-31.53	230	-31.10	277	-16.38
United Medical Center					78	-54.15
ACUTE TOTAL	2641	0.76	2815	5.00	2772	2.60

Chart 8: Observation Patient Admissions Aggregate – Most Recent 15 Months



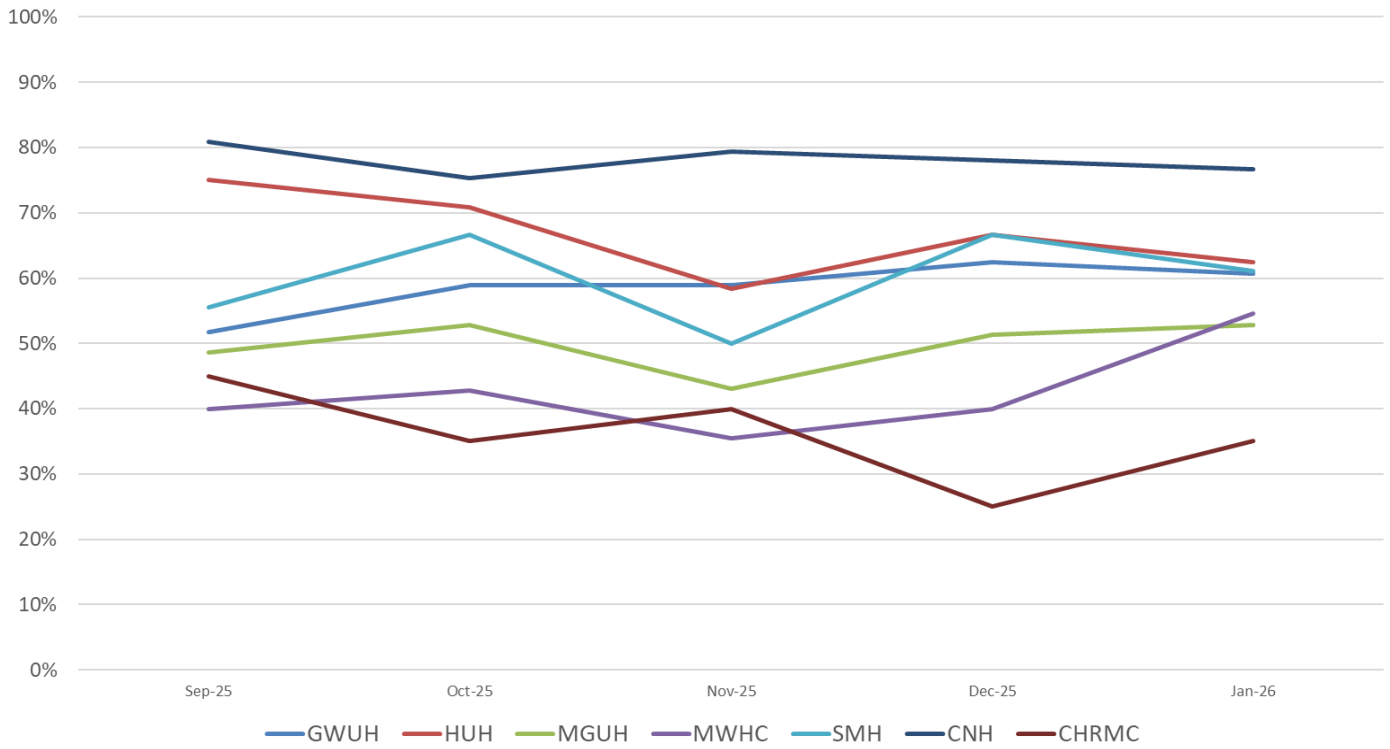
Average Daily Census by Hospital and Service

Occupancy Rates By Unit Type Acute Care Hospitals – 2026

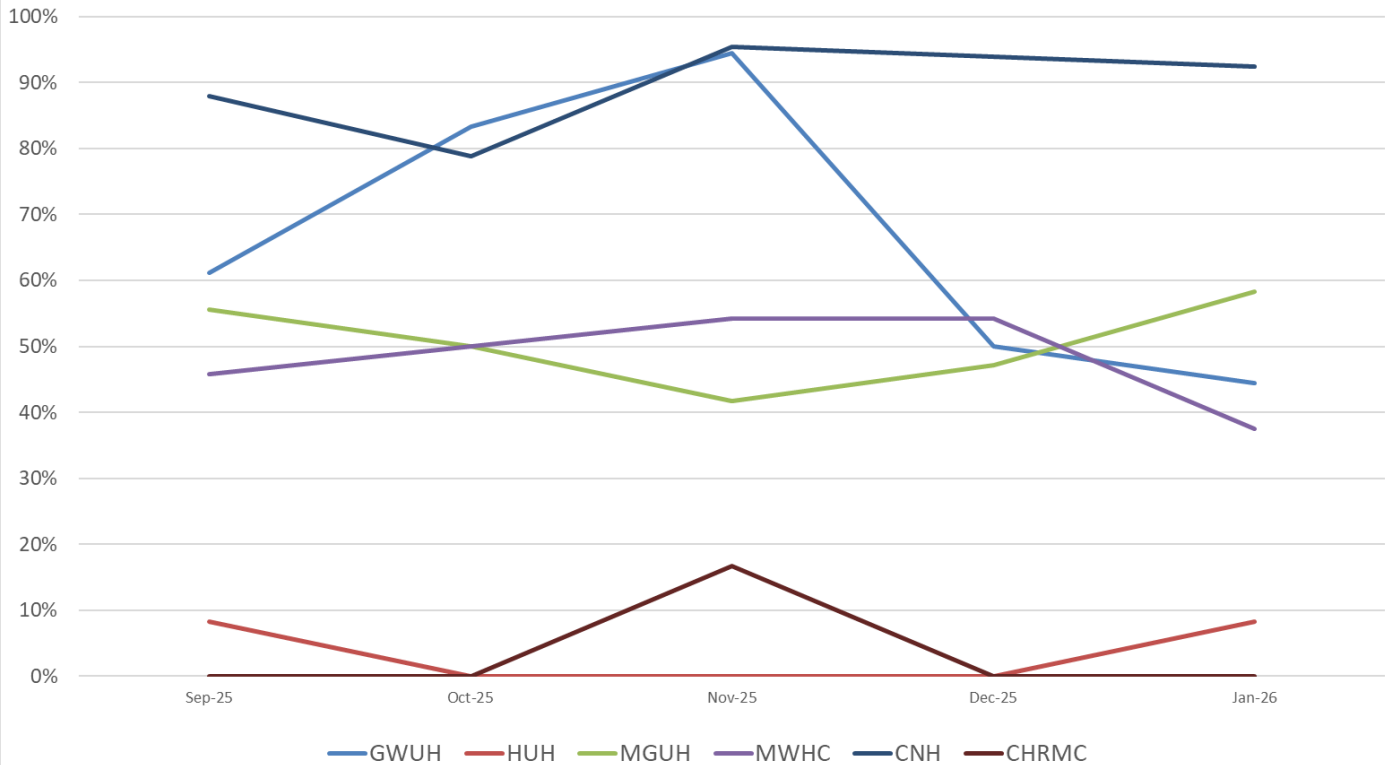


Occupancy Rates By Unit Type Acute Care Hospitals – 2026

ICU Occupancy Rate by Hospital

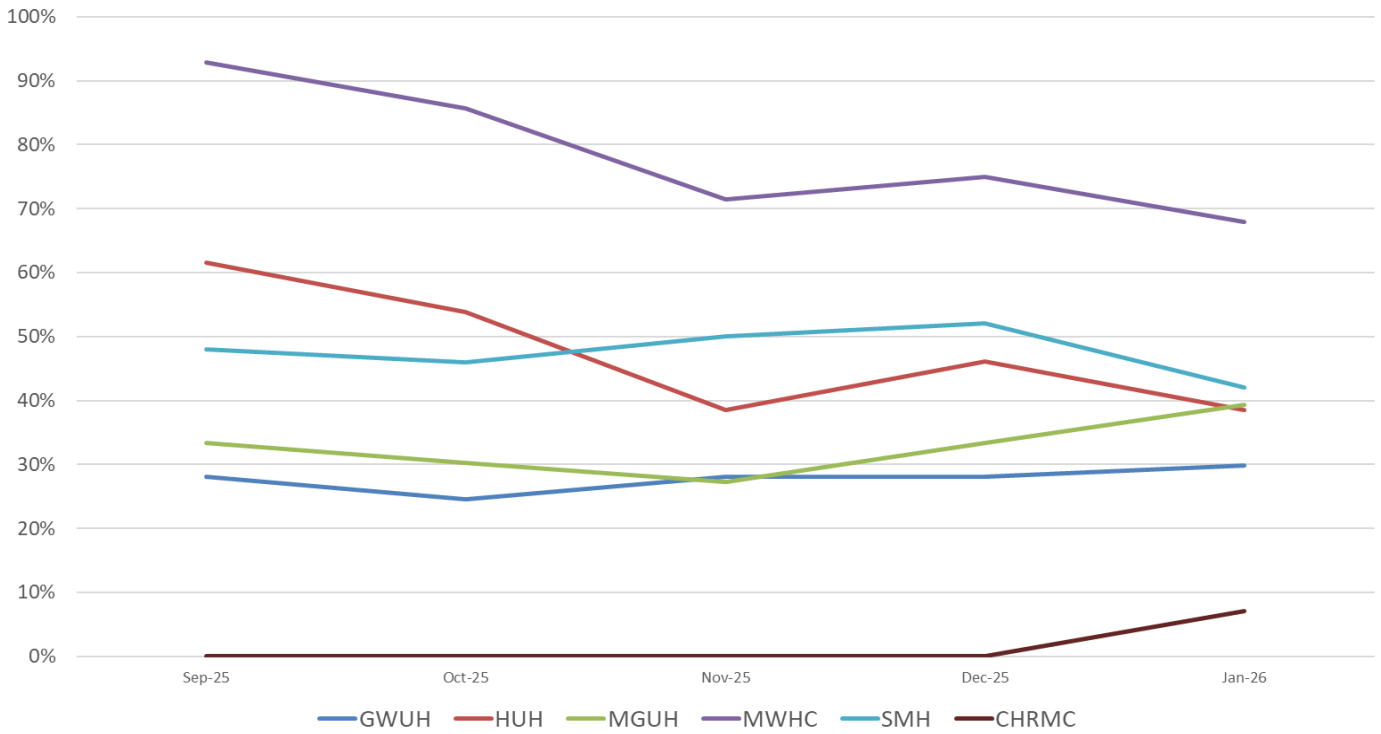


Neonatal Intensive Care Unit Occupancy Rate by Hospital

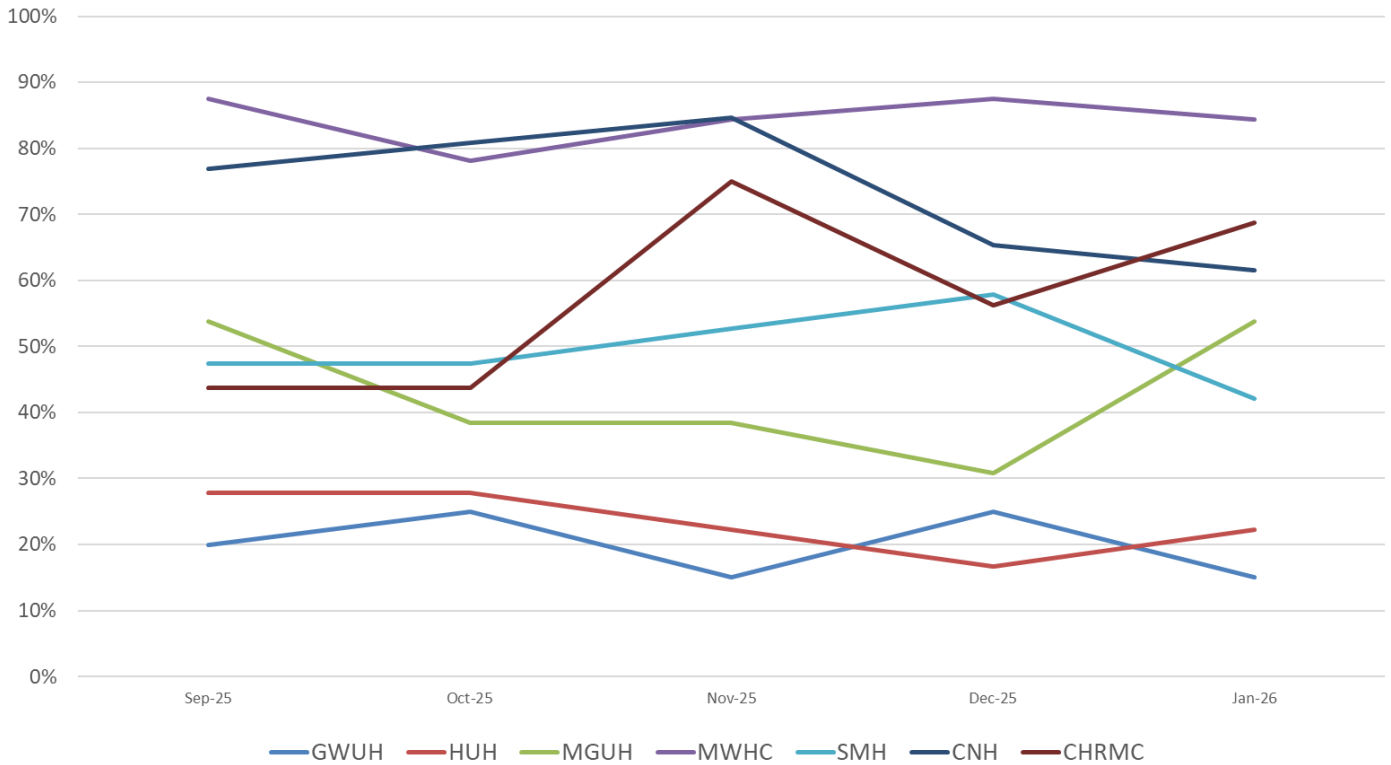


Occupancy Rates By Unit Type Acute Care Hospitals – 2026

OB-GYN Occupancy Rate by Hospital

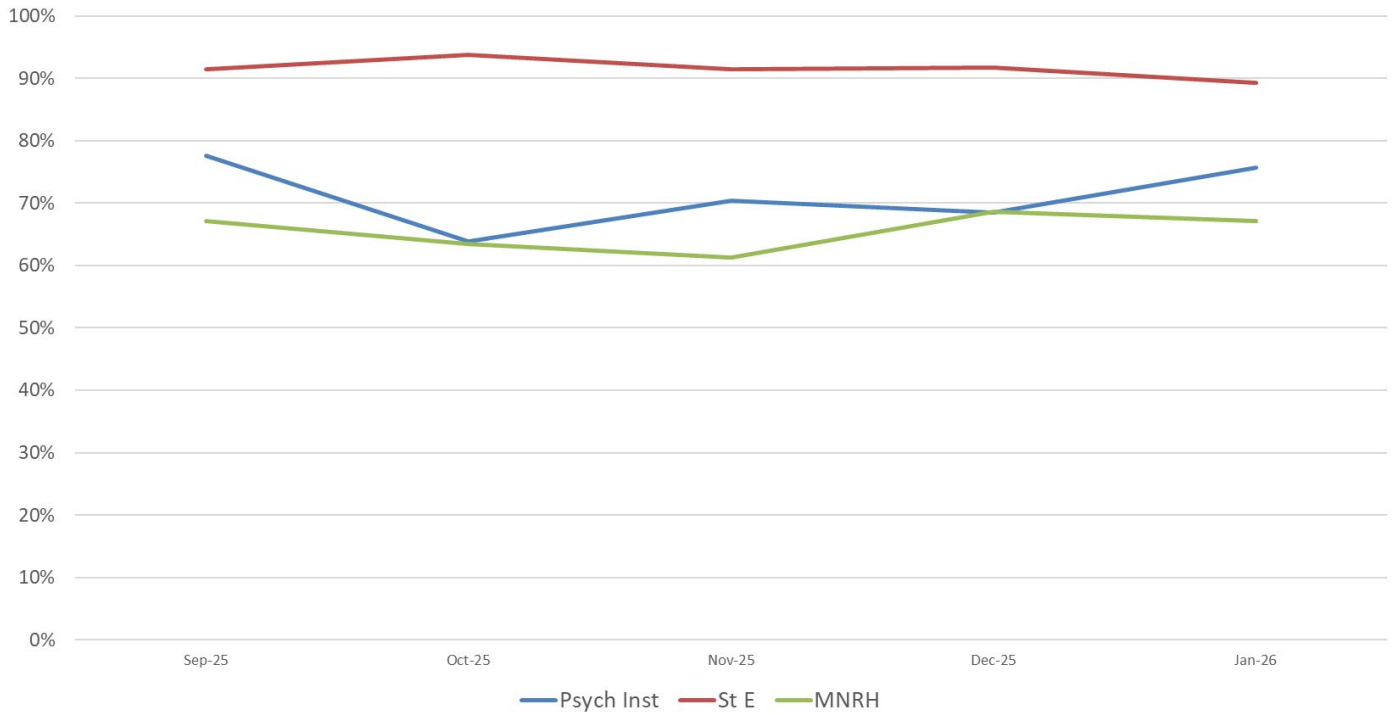


Psychiatric Unit Occupancy Rate by Hospital

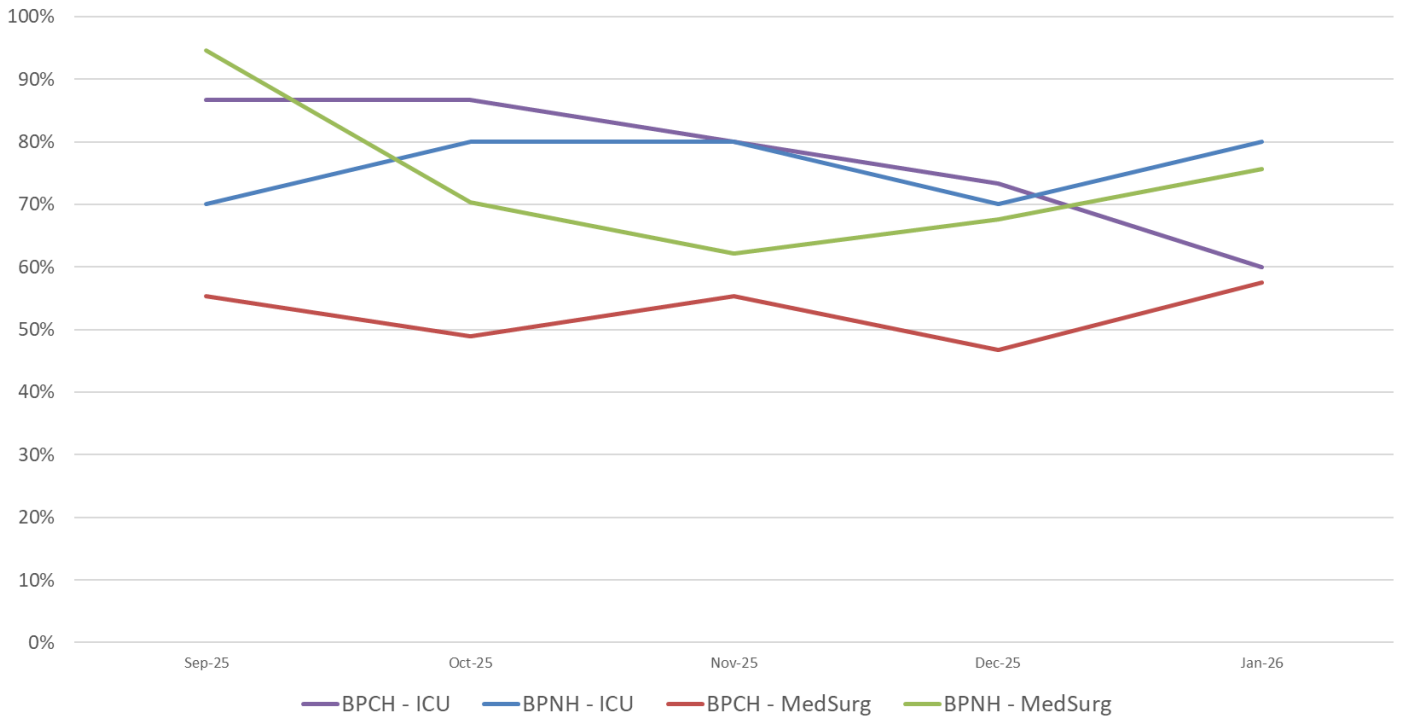


Occupancy Rates Specialty Hospitals - 2025

Specialty Facility Occupancy Rate by Hospital



Long Term Acute Care Facility Occupancy Rate by Hospital



Occupancy Rates Specialty Hospitals - 2025

