

Highlights

Four out of six utilization metrics showed a considerable increase in volumes from November to December 2025 compared to recent months. Emergency department visits present the highest increase in volumes with the biggest number of visits in the past 15 months translating into a 12% increase from November to December 2025. Psychiatric admissions and associated civil commitment admissions are the two metrics with a slight decrease in volumes this month with a -2% and -3% change compared to last month respectively (See Fig. 1 below).

Fig. 1: DC Hospitals Percentage Change, November-December 2025

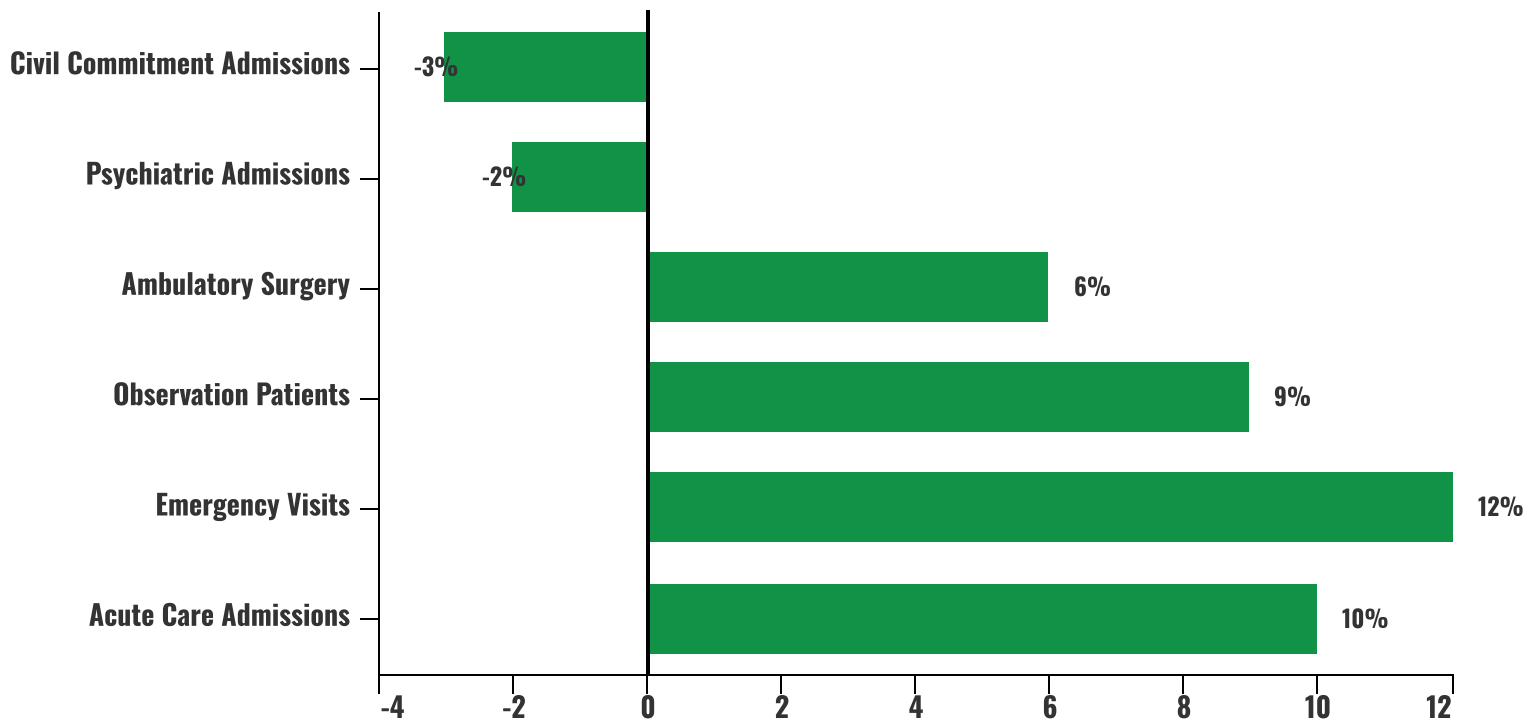


Table of Contents

Admissions	3
Table 1: Acute Care Hospitals – Current Admissions Compared to Previous Intervals.....	3
Table 2: Acute Care Hospitals – Admissions Previous 15 Months.....	3
Chart 1: Acute Care Hospitals – Aggregate Admissions Most Recent 15 Months.....	3
Table 3: Specialty Care Hospitals – Current Admissions Compared to Previous Intervals.....	4
Table 4: Specialty Care Hospitals – Admissions Previous 15 Months by Hospital.....	4
Chart 2: Specialty Care Hospitals – Aggregate Admissions Most Recent 15 Months.....	4
Patient Days	5
Table 5: Patient Days for Acute Care and Specialty Care Hospitals-Current Compared to Previous Intervals.....	5
Psychiatric Admissions and Patient Days	6
Table 6: Psychiatric Admissions and Patient Days Current Compared to Previous Intervals.....	6
Table 7: Psychiatric Admissions Previous 15 Months by Hospital.....	7
Chart 3: Acute Care Hospitals and Psychiatric Institutions - Psychiatric Admissions Aggregate Most Recent 15 Months....	7
Table 8: Civil Commitment Admissions – Admissions Previous 15 Months by Hospital.....	8
Chart 4: Civil Commitment Admissions – Aggregate Admissions Most Recent 15 Months.....	8
Rehabilitation Admissions and Patient Days	9
Table 9: Rehabilitation Admissions and Patient Days Current Compared with Previous Intervals	9
Skilled Nursing Facility Admissions and Patient Days	9
Table 10: SNF Admissions and Patient Days Current Compared with Previous Intervals	9
Newborn and Neonatal ICU Data: Admissions and Patient Days	10
Table 11: Newborn Admissions and Patient Days – Current Compared to Previous Intervals.....	10
Table 12: Newborn Admissions by Hospital Previous 15 Months.....	10
Chart 5: Newborn Admissions – Most Recent 15 Months.....	10
Table 13: Neonatal ICU Admissions and Patient Days – Current Compared to Previous Intervals.....	11
Table 14: Neonatal Admissions by Hospital Previous 15 Months.....	11
Chart 6: Neonatal Admissions Aggregate Most Recent 15 Months.....	11
Emergency Department Visits	12
Table 15: Emergency Department Visits – Current Compared to Previous Intervals.....	12
Table 16: Emergency Department Visits by Hospital Previous 15 Months.....	12
Chart 7: Emergency Department Visits Aggregate – Most Recent 15 Months.....	12
Ambulatory Surgeries	13
Table 17: Ambulatory Surgeries by Hospital Current Compared with Previous Intervals	13
Observation Patients	14
Table 18: Observation Admissions by Hospital Current Compared with Previous Intervals	14
Chart 8: Observation Patient Admissions Aggregate – Most Recent 15 Months.....	14
Average Daily Census by Hospital by Service	15

Admissions

Note: In this section, “Admissions” excludes newborns and SNF patients

Table 1: Acute Care Hospitals - Current Admissions Compared to Previous Intervals

	CURRENT MONTH		LAST 3 MONTHS		LAST 12 MONTHS	
	Actual This Year	% Change From Last Year	Average This Year	% Change From Last Year	Average This Year	% Change From Last Year
ADMISSIONS						
Acute						
Cedar Hill Regional Medical Center	389		384		234	
Children's National Hospital	1,195	-6.20	1,140	-7.89	1,114	-4.62
George Washington University Hospital	1,346	1.58	1,338	0.96	1,357	0.85
Howard University Hospital	513	-8.39	505	-5.85	522	-8.36
MedStar Georgetown University Hospital	1,447	14.30	1,406	8.02	1,386	7.83
MedStar Washington Hospital Center	2,522	-0.36	2,455	-2.48	2,490	0.33
Sibley Memorial Hospital	996	-8.12	960	-9.41	988	-4.65
United Medical Center					51	-79.63
ACUTE TOTAL	8408	1.88	8187	-0.04	8141	0.09

Table 2: Acute Care Hospitals – Admissions Previous 15 Months

Acute Care Hospital Admissions - previous 15 months															
	Oct-24	Nov-24	Dec-24	Jan-25	Feb-25	Mar-25	Apr-25	May-25	Jun-25	Jul-25	Aug-25	Sep-25	Oct-25	Nov-25	Dec-25
Cedar Hill Regional Medical Center							89	262	307	342	324	336	388	375	389
Children's National Hospital	1234	1205	1274	1197	1048	1203	1103	1119	1083	1053	1018	1119	1125	1100	1195
George Washington University Hospital	1340	1311	1325	1380	1229	1353	1364	1357	1389	1430	1419	1350	1391	1277	1346
Howard University Hospital	533	515	560	596	503	527	502	492	482	546	520	585	580	421	513
MedStar Georgetown University Hospital	1358	1280	1266	1372	1270	1342	1383	1375	1403	1419	1395	1452	1469	1301	1447
MedStar Washington Hospital Center	2576	2445	2531	2571	2363	2563	2536	2508	2569	2473	2498	2434	2539	2304	2522
Sibley Memorial Hospital	1085	1010	1084	1093	926	1024	1016	1027	980	928	1010	967	992	892	996
United Medical Center	223	205	213	236	202	167	1								
TOTAL	8349	7971	8253	8445	7541	8179	7994	8140	8213	8191	8184	8243	8484	7670	8408
					lowest		highest								

Chart 1: Acute Care Hospitals – Aggregate Admissions Most Recent 15 Months

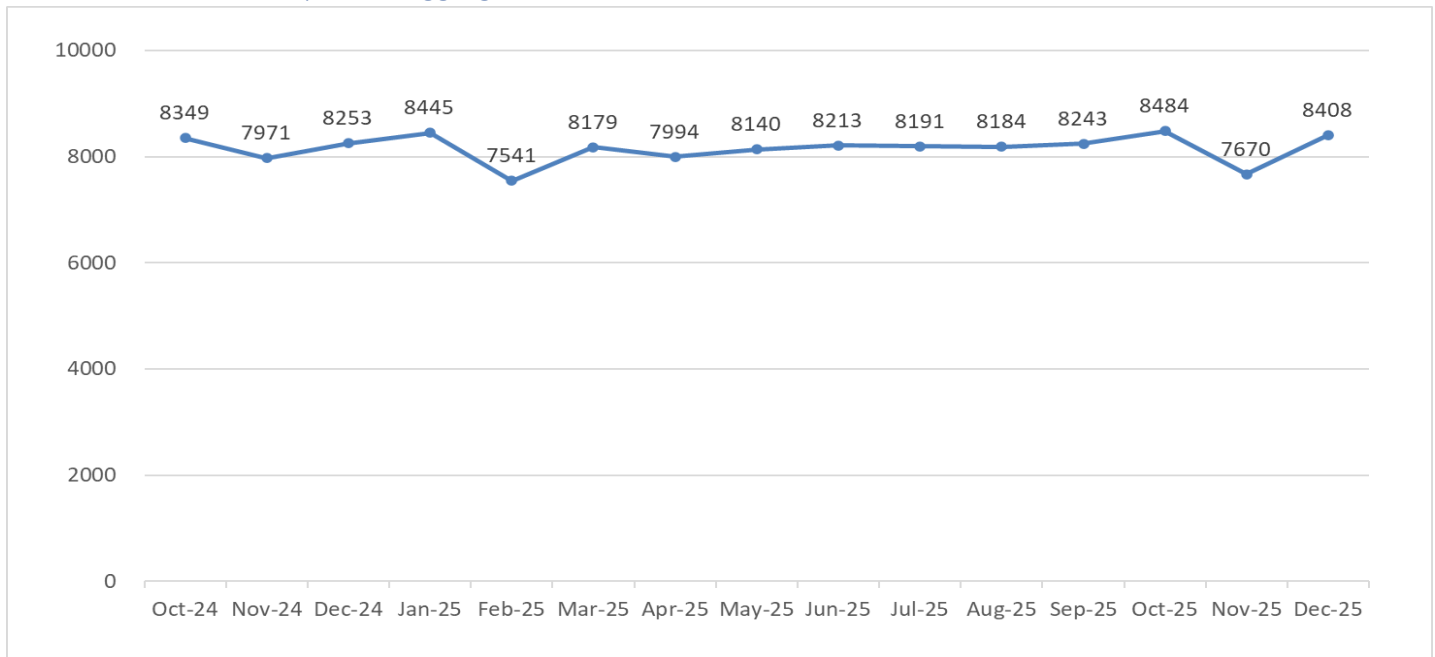


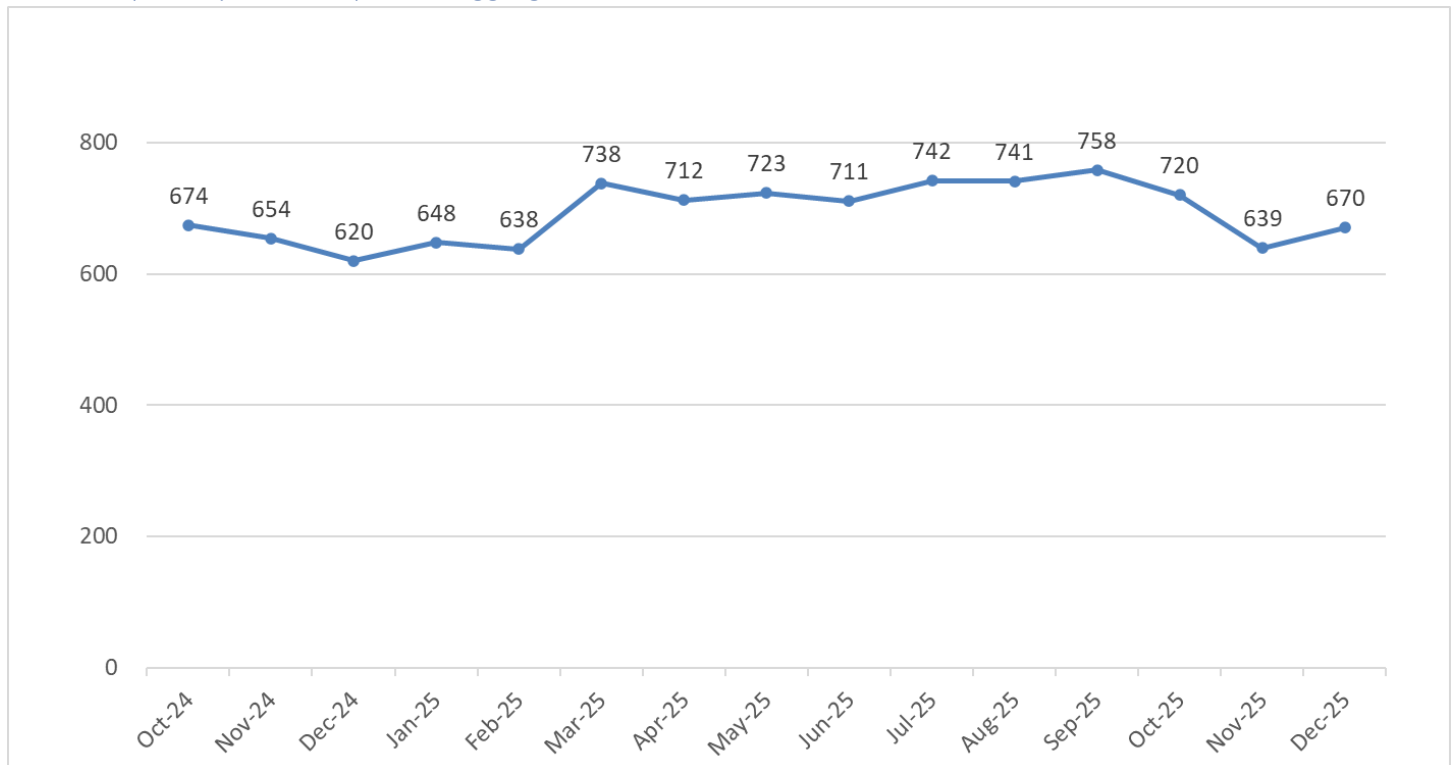
Table 3: Specialty Care Hospitals – Current Admissions Compared to Previous Intervals

Specialty	CURRENT MONTH		LAST 3 MONTHS		LAST 12 MONTHS	
	Actual This Year	% Change From Last Year	Average This Year	% Change From Last Year	Average This Year	% Change From Last Year
ADMISSIONS						
BridgePoint Hospital -Capitol Hill	35	-20.45	37	-20.71	41	-5.87
BridgePoint Hospital -National Harborside	33	10.00	35	0.00	39	9.77
MedStar National Rehabilitation Hospital	183	18.83	173	13.54	160	2.72
Psychiatric Institute of Washington	379	5.28	393	2.88	427	11.11
Saint Elizabeths Hospital	40	25.00	38	15.15	35	10.68
ACUTE TOTAL	670	8.06	676	4.16	703	7.86

Table 4: Specialty Care Hospitals – Admissions Previous 15 Months by Hospital

Specialty Hospital Admissions - previous 15 months															
	Oct-24	Nov-24	Dec-24	Jan-25	Feb-25	Mar-25	Apr-25	May-25	Jun-25	Jul-25	Aug-25	Sep-25	Oct-25	Nov-25	Dec-25
MedStar National Rehabilitation Hospital	156	148	154	157	146	168	169	159	161	144	141	159	179	158	183
Psychiatric Institute of Washington	403	384	360	386	381	422	428	454	446	475	469	481	428	373	379
Saint Elizabeths Hospital	36	31	32	27	26	37	36	31	34	42	37	41	37	37	40
BridgePoint Hospital -Capitol Hill	41	55	44	34	49	57	43	41	38	46	44	34	36	40	35
BridgePoint Hospital -National Harborside	38	36	30	44	36	54	36	38	32	35	50	43	40	31	33
TOTAL	674	654	620	648	638	738	712	723	711	742	741	758	720	639	670
					lowest			highest							

Chart 2: Specialty Care Hospitals – Aggregate Admissions Most Recent 15 Months



Patient Days

Note: In this section, "Patient Days" excludes newborns and SNF patients

Table 5: Patient Days for Acute Care and Specialty Care Hospitals – Current Compared with Previous Intervals

	CURRENT MONTH		LAST 3 MONTHS		LAST 12 MONTHS	
	Actual This Year	% Change From Last Year	Average This Year	% Change From Last Year	Average This Year	% Change From Last Year
PATIENT DAYS						
Acute						
Cedar Hill Regional Medical Center	1,765		1,489		862	
Children's National Hospital	6,176	-10.97	6,125	-13.69	6,260	-6.86
George Washington University Hospital	8,779	3.02	8,730	5.63	8,289	0.29
Howard University Hospital	3,049	-0.65	2,989	-6.87	3,103	-7.21
MedStar Georgetown University Hospital	11,599	6.21	11,398	2.47	11,262	5.29
MedStar Washington Hospital Center	18,542	-8.07	17,832	-11.29	18,857	-4.65
Sibley Memorial Hospital	4,343	-11.69	4,354	-4.71	4,475	2.18
United Medical Center					380	-76.66
ACUTE TOTAL	54253	▼ -3.07	52917	▼ -5.10	53488	-2.41
BridgePoint Hospital -Capitol Hill	1,021	-9.41	1,087	-1.81	1,095	-0.96
BridgePoint Hospital -National Harborside	1,011	12.21	995	6.11	1,114	6.94
MedStar National Rehabilitation Hospital	2,920	-1.91	2,705	-0.26	2,731	0.08
Psychiatric Institute of Washington	3,223	27.95	3,144	20.85	3,254	8.32
Saint Elizabeths Hospital	8,294	1.23	8,156	1.50	8,139	0.55
SPECIALTY TOTAL	16469	▼ 4.78	16087	▼ 4.50	16333	2.24
GRAND TOTAL	70722	▼ -1.35	69004	▼ -3.02	69821	-1.36

Psychiatric Admissions and Patient Days

Table 6: Psychiatric Admissions and Patient Days Current Compared to Previous Intervals

	CURRENT MONTH		LAST 3 MONTHS		LAST 12 MONTHS	
	Actual This Year	% Change From Last Year	Average This Year	% Change From Last Year	Average This Year	% Change From Last Year
PSYCH ADMISSIONS						
Acute						
Cedar Hill Regional Medical Center	39		44		25	
Children's National Hospital	32	-38.46	37	-35.63	50	-15.56
George Washington University Hospital	29	-19.44	28	-24.11	29	-30.30
Howard University Hospital	25	4.17	25	-6.17	25	-14.33
MedStar Georgetown University Hospital	30	-14.29	35	12.90	34	11.29
MedStar Washington Hospital Center	108	-10.74	116	5.45	111	5.80
Sibley Memorial Hospital	54	28.57	55	13.01	50	1.02
United Medical Center					36	-44.62
ACUTE TOTAL	317	-13.62	341	-8.83	360	-5.33
Specialty						
Psychiatric Institute of Washington	379	5.28	393	2.88	427	11.11
Saint Elizabeths Hospital	40	25.00	38	15.15	35	10.68
SPECIALTY TOTAL	419	6.89	431	3.85	462	11.07
GRAND TOTAL	736	-3.03	772	-2.15	822	3.25
PSYCH PATIENT DAYS						
Acute						
Cedar Hill Regional Medical Center	292		288		147	
Children's National Hospital	525	9.60	608	0.88	549	-7.60
George Washington University Hospital	155	-20.10	135	-23.63	131	-28.68
Howard University Hospital	106	-10.92	119	-8.46	135	-6.91
MedStar Georgetown University Hospital	120	4.35	139	1.70	152	12.58
MedStar Washington Hospital Center	861	5.64	817	3.99	821	5.26
Sibley Memorial Hospital	328	7.19	304	-6.37	315	-9.20
United Medical Center					156	-44.28
ACUTE TOTAL	2387	4.65	2409	-0.63	2406	-2.39
Specialty						
Psychiatric Institute of Washington, D.C.	3,223	27.95	3,144	20.85	3,254	8.32
Saint Elizabeths Hospital	8,294	1.23	8,156	1.50	8,139	0.55
SPECIALTY TOTAL	11517	7.51	11300	6.23	11393	2.65
GRAND TOTAL	13904	7.01	13709	4.96	13799	1.74

Table 7: Psychiatric Admissions Previous 15 Months by Hospital

Psychiatric Admissions - previous 15 months															
	Oct-24	Nov-24	Dec-24	Jan-25	Feb-25	Mar-25	Apr-25	May-25	Jun-25	Jul-25	Aug-25	Sep-25	Oct-25	Nov-25	Dec-25
Cedar Hill Regional Medical Center							10	25	33	38	28	34	41	51	39
Children's National Hospital	69	53	52	59	43	74	60	54	63	51	46	35	42	38	32
George Washington University Hospital	42	34	36	34	29	33	28	27	27	29	26	34	40	16	29
Howard University Hospital	29	28	24	27	18	28	31	18	23	30	20	34	28	23	25
MedStar Georgetown University Hospital	30	28	35	31	30	39	37	32	34	33	34	29	38	37	30
MedStar Washington Hospital Center	91	118	121	107	111	116	113	116	105	98	104	113	118	122	108
Sibley Memorial Hospital	52	52	42	51	37	49	53	53	36	49	52	50	58	53	54
United Medical Center	65	63	57	54	50	40	0								
Psychiatric Institute of Washington	403	384	360	386	381	422	428	454	446	475	469	481	428	373	379
Saint Elizabeths Hospital	36	31	32	27	26	37	36	31	34	42	37	41	37	37	40
TOTAL	817	791	759	776	725	838	796	810	801	845	816	851	830	750	736
					lowest			highest							

Chart 3: Acute Care Hospitals and Psychiatric Institutions– Psychiatric Admissions Aggregate Most Recent 15 Months.

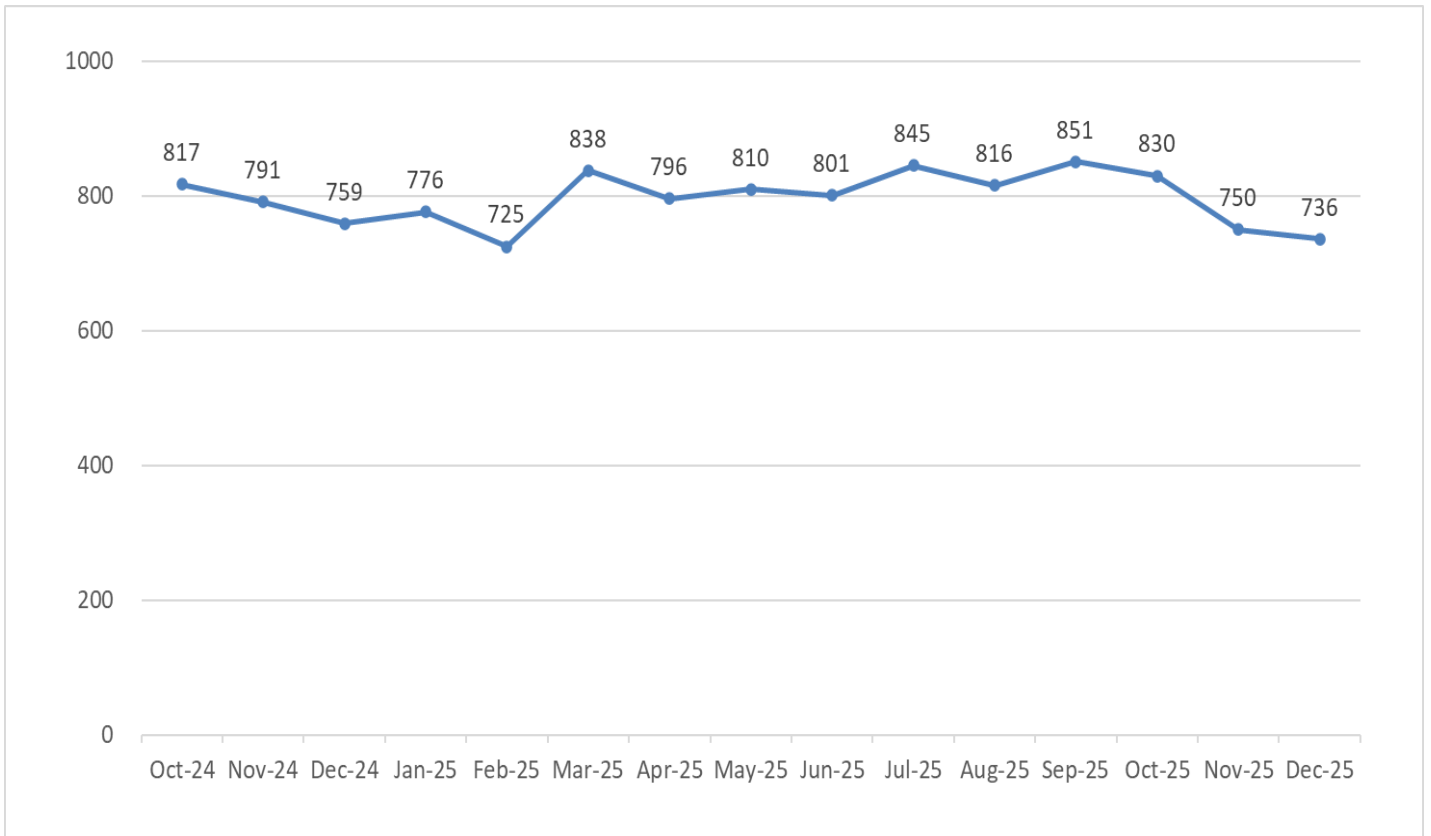
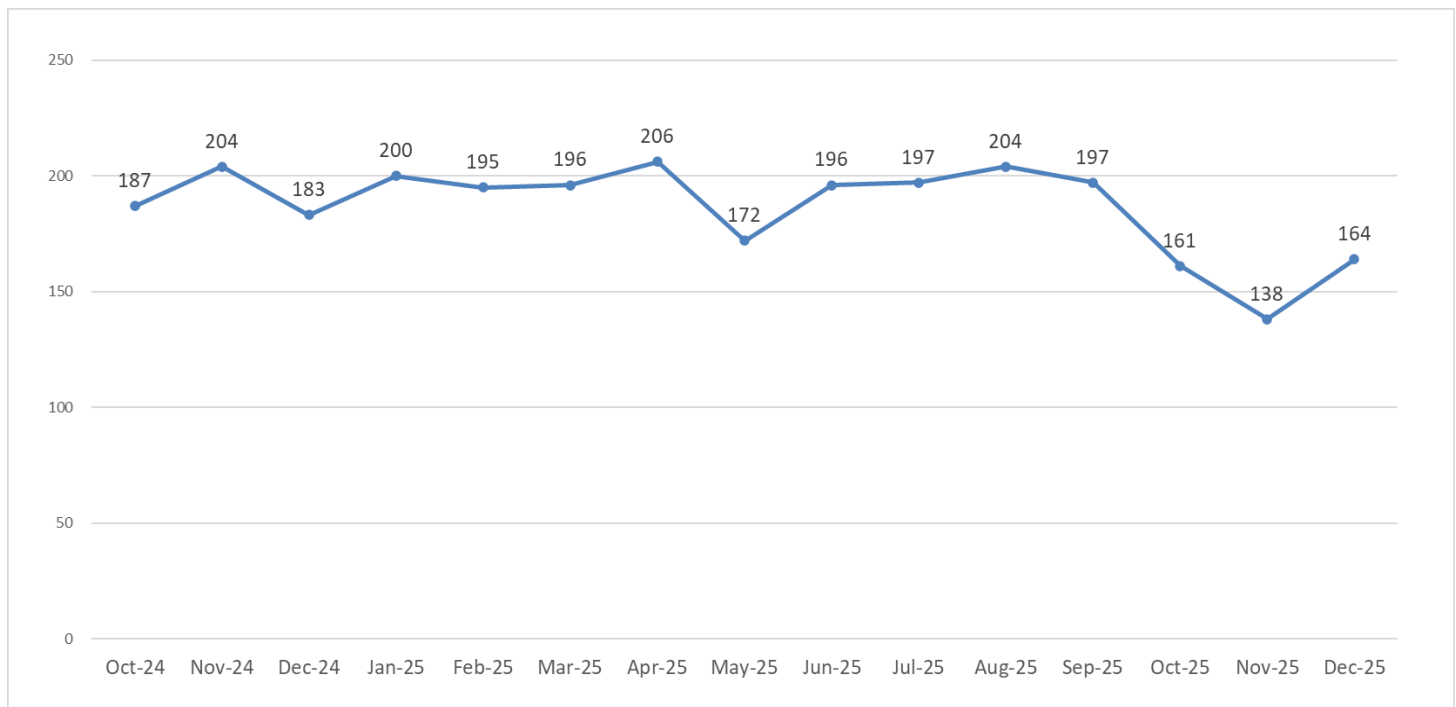


Table 8: Civil Commitment Admissions – Admissions Previous 15 Months by Hospital

Civil Commitment Admissions - previous 15 months															
	Oct-24	Nov-24	Dec-24	Jan-25	Feb-25	Mar-25	Apr-25	May-25	Jun-25	Jul-25	Aug-25	Sep-25	Oct-25	Nov-25	Dec-25
Cedar Hill Regional Medical Center							0	0	0	0	0	0	1	0	1
MedStar Washington Hospital Center	37	37	55	43	46	45	48	35	36	43	39	44	45	43	49
Psychiatric Institute of Washington, D.C	118	135	102	131	124	132	156	136	160	154	164	153	114	94	113
Saint Elizabeth's Hospital	2	2	2	2	0	4	2	1	0	0	1	0	1	1	1
United Medical Center	30	30	24	24	25	15	0								
TOTAL	187	204	183	200	195	196	206	172	196	197	204	197	161	138	164
							lowest		highest						

Chart 4: Civil Commitment Admissions – Aggregate Admissions Most Recent 15 Months



Rehabilitation Admissions and Patient Days

Table 9: Rehabilitation Admissions and Patient Days Current Compared with Previous Intervals

	Actual This Year	% Change From Last Year	Average This Year	% Change From Last Year	Average This Year	% Change From Last Year
REHAB ADMISSIONS						
Acute						
George Washington University Hospital	35	2.94	34	2.02	33	7.99
Subacute Rehab						
MedStar National Rehabilitation Hospital	183	18.83	173	13.54	160	2.72
GRAND TOTAL	218	15.96	207	11.49	193	3.58
REHAB PATIENT DAYS						
Acute						
George Washington University Hospital	407	-4.46	417	13.41	393	3.20
Subacute Rehab						
MedStar National Rehabilitation Hospital	2,920	-1.91	2,705	-0.26	2,731	0.08
GRAND TOTAL	3327	-2.23	3122	1.37	3124	0.46

Skilled Nursing Facility Admissions and Patient Days*

Table 10: SNF Admissions and Patient Days Current Compared with Previous Intervals

	CURRENT MONTH		LAST 3 MONTHS		LAST 12 MONTHS	
	Actual This Year	% Change From Last Year	Average This Year	% Change From Last Year	Average This Year	% Change From Last Year
SNF ADMISSIONS						
Acute						
Sibley Memorial Hospital	27	-3.57	28	-8.60	32	27.30
ACUTE TOTAL	27	-3.57	28	-8.60	32	27.30
Specialty						
BridgePoint Hospital -Capitol Hill	0	-100.00	10	-11.76	16	-18.88
BridgePoint Hospital -National Harborside	0	-100.00	17	54.55	19	29.70
SPECIALTY TOTAL	0	-100.00	27	20.90	35	2.24
GRAND TOTAL	27	-53.45	55	3.75	68	12.85
SNF PATIENT DAYS						
Acute						
Sibley Memorial Hospital	642	-4.61	635	-0.26	708	30.95
ACUTE TOTAL	642	-4.61	635	-0.26	708	30.95
Specialty						
BridgePoint Hospital -Capitol Hill	0	-100.00	3,438	0.52	3,250	-3.21
BridgePoint Hospital -National Harborside	0	-100.00	3,584	1.09	3,571	-3.28
SPECIALTY TOTAL	0	-100.00	7022	0.81	6821	-3.25
GRAND TOTAL	642	-91.58	7657	0.72	7529	-0.81

*BridgePoint Capitol Hill and National Harborside status changed as of December 2025 and the skilled nursing facility data was not included in this report.

Newborn and Neonatal ICU Data: Admissions and Patient Days

Table 11: Newborn Admissions and Patient Days– Current Compared to Previous Intervals

	CURRENT MONTH		LAST 3 MONTHS		LAST 12 MONTHS	
	Actual This Year	% Change From Last Year	Average This Year	% Change From Last Year	Average This Year	% Change From Last Year
NEWBORN ADMISSIONS						
Cedar Hill Regional Medical Center	8		7		5	
George Washington University Hospital	167	19.29	154	10.26	142	-5.55
Howard University Hospital	49	-3.92	49	-13.61	54	-27.39
MedStar Georgetown University Hospital	73	5.80	64	-12.67	69	0.00
MedStar Washington Hospital Center	249	-3.49	229	-19.58	256	-10.94
Sibley Memorial Hospital	294	-1.67	282	-8.93	286	-10.03
ACUTE TOTAL	840	2.82	785	-9.15	813	-9.65
NEWBORN PATIENT DAYS						
Cedar Hill Regional Medical Center	59		27		22	
George Washington University Hospital	316	16.18	288	4.98	265	-8.51
Howard University Hospital	230	25.00	269	8.89	267	-8.14
MedStar Georgetown University Hospital	175	9.38	170	-3.05	175	3.92
MedStar Washington Hospital Center	1,271	2.17	1,276	-5.18	1,208	-5.74
Sibley Memorial Hospital	873	10.93	817	-3.12	792	-10.49
ACUTE TOTAL	2924	10.46	2847	-1.33	2728	-6.40

Table 12: Newborn Admissions by Hospital Previous 15 Months

Newborn Admissions - previous 15 months															
	Oct-24	Nov-24	Dec-24	Jan-25	Feb-25	Mar-25	Apr-25	May-25	Jun-25	Jul-25	Aug-25	Sep-25	Oct-25	Nov-25	Dec-25
Cedar Hill Regional Medical Center							3	8	4	6	9	13	7	6	8
George Washington University Hospital	122	157	140	126	120	134	137	137	125	163	140	158	143	152	167
Howard University Hospital	50	68	51	62	58	51	41	59	47	65	61	62	54	43	49
MedStar Georgetown University Hospital	73	79	69	69	54	68	75	59	71	89	74	79	61	59	73
MedStar Washington Hospital Center	305	290	258	279	273	278	252	253	308	253	236	250	229	208	249
Sibley Memorial Hospital	327	303	299	315	281	284	278	290	267	277	312	284	285	267	294
TOTAL	877	897	817	851	786	815	786	806	822	853	832	846	779	735	840
					lowest			highest							

Chart 5: Newborn Admissions – Most Recent 15 Months

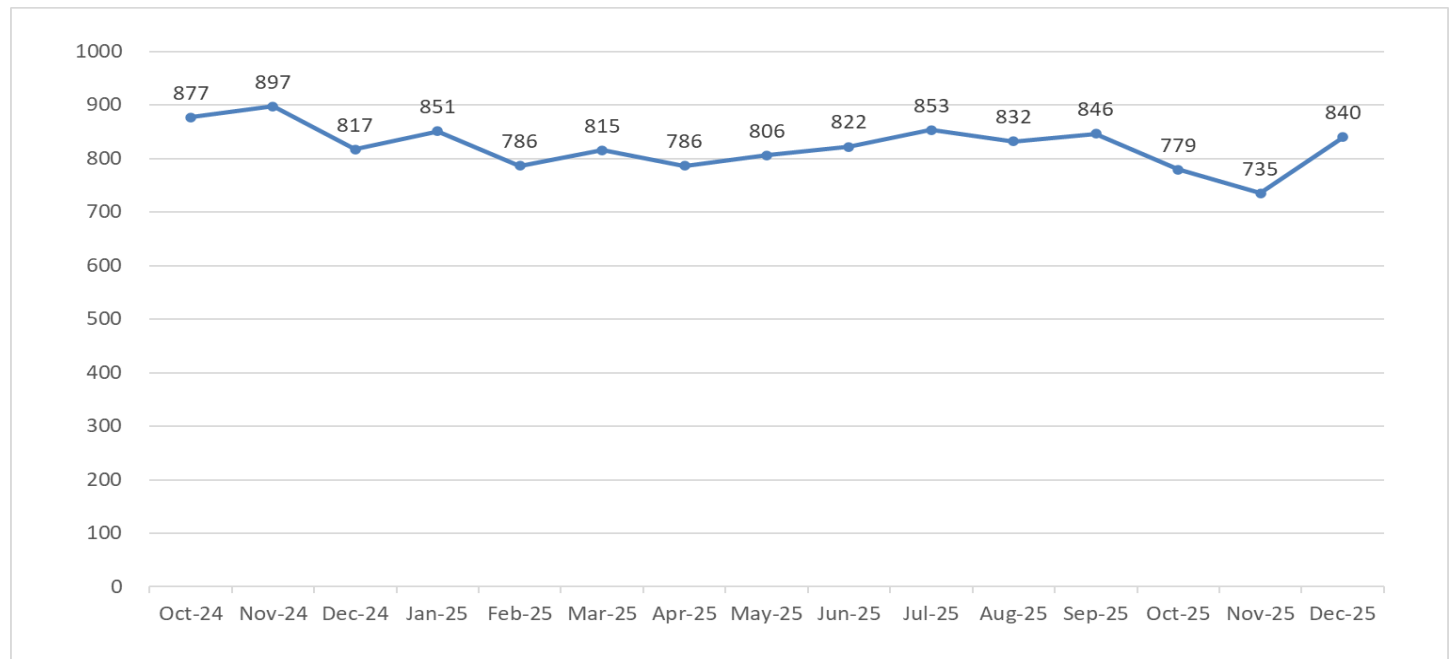


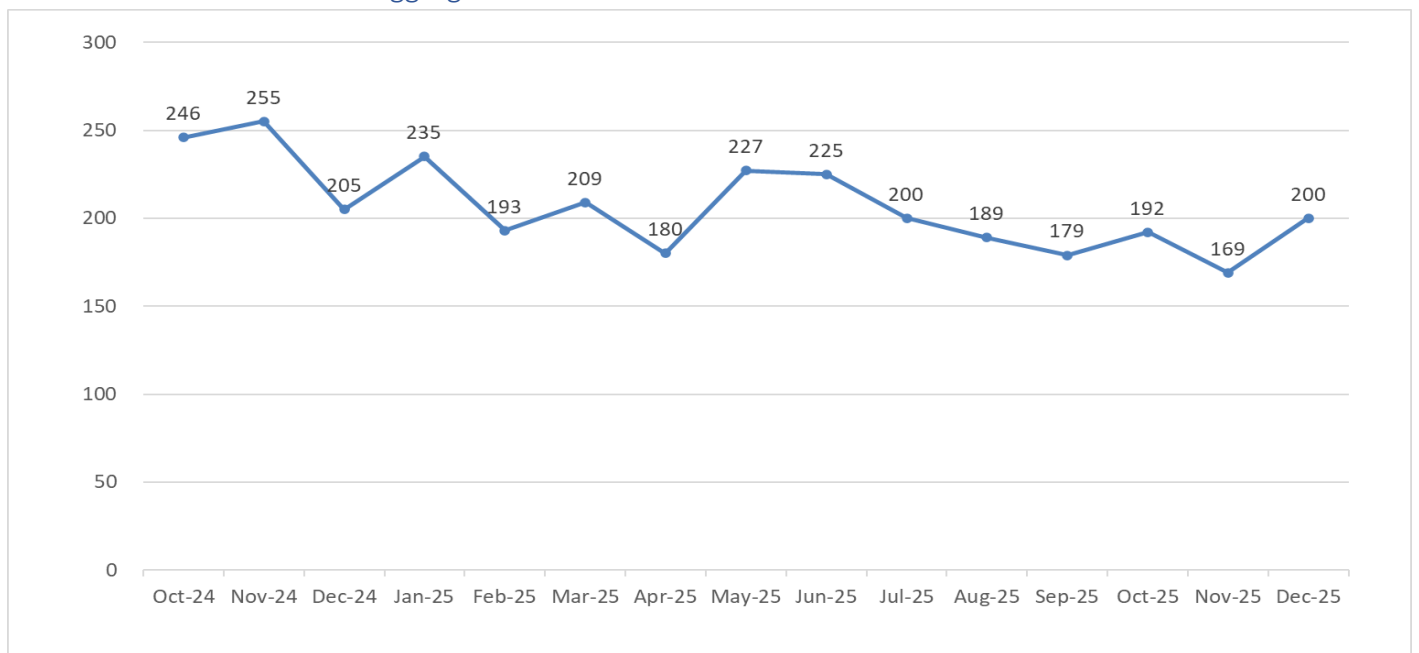
Table 13: Neonatal ICU Admissions and Patient Days– Current Compared to Previous Intervals

	CURRENT MONTH		LAST 3 MONTHS		LAST 12 MONTHS	
	Actual This Year	% Change From Last Year	Average This Year	% Change From Last Year	Average This Year	% Change From Last Year
NEONATAL ADMISSIONS						
Cedar Hill Regional Medical Center	3		3		2	
Children's National Hospital	98	46.27	85	22.01	80	10.97
George Washington University Hospital	16	14.29	18	-25.35	20	-22.61
Howard University Hospital	1	-66.67	2	-58.33	3	-31.37
MedStar Georgetown University Hospital	30	36.36	28	31.25	27	16.73
MedStar Washington Hospital Center	52	-47.47	52	-55.43	67	-35.77
ACUTE TOTAL	200	-2.44	187	-20.54	200	-13.43
NEONATAL PATIENT DAYS						
Cedar Hill Regional Hospital	3		13		5	
Children's National Hospital	1,914	-6.13	1,803	-11.78	1,807	-9.73
George Washington University Hospital	279	-41.26	421	-18.15	361	-17.82
Howard University Hospital	15	-28.57	10	-64.71	37	-23.92
MedStar Georgetown University Hospital	534	-36.20	512	-30.25	662	6.10
MedStar Washington Hospital Center	718	-12.86	732	-18.16	715	-12.57
ACUTE TOTAL	3463	-17.47	3490	-17.18	3585	-8.77

Table 14: Neonatal Admissions by Hospital Previous 15 Months

Neonatal Admissions - previous 15 months															
	Oct-24	Nov-24	Dec-24	Jan-25	Feb-25	Mar-25	Apr-25	May-25	Jun-25	Jul-25	Aug-25	Sep-25	Oct-25	Nov-25	Dec-25
Cedar Hill Regional Medical Center							0	9	4	0	1	1	1	4	3
Children's National Hospital	68	74	67	90	78	82	62	85	75	82	88	64	83	74	98
George Washington University Hospital	28	29	14	29	24	16	18	11	23	26	21	22	22	15	16
Howard University Hospital	7	2	3	1	2	4	6	3	4	5	2	3	4	0	1
MedStar Georgetown University Hospital	23	19	22	37	23	21	25	25	29	28	24	32	32	22	30
MedStar Washington Hospital Center	120	131	99	78	66	86	69	94	90	59	53	57	50	54	52
TOTAL	246	255	205	235	193	209	180	227	225	200	189	179	192	169	200
					lowest			highest							

Chart 6: Neonatal Admissions Aggregate Most Recent 15 Months



Emergency Department Visits

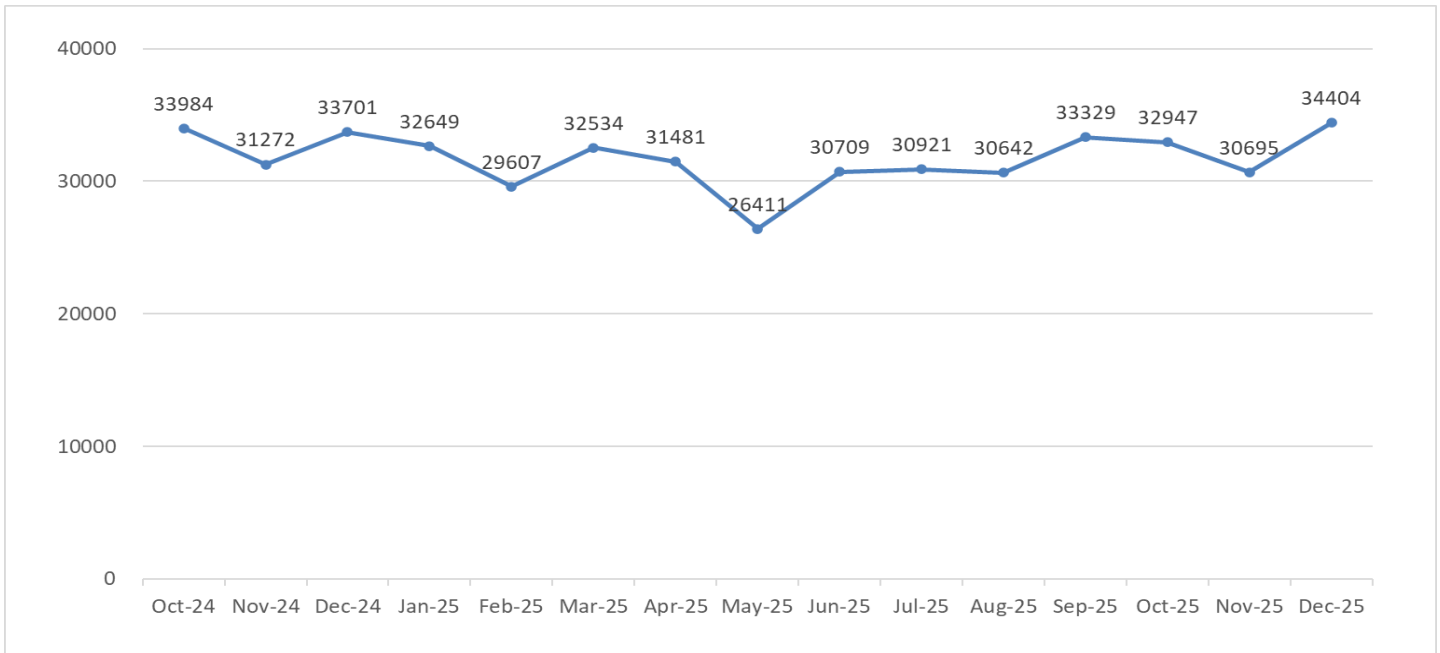
Table 15: Emergency Department Visits– Current Compared to Previous Intervals

	CURRENT MONTH		LAST 3 MONTHS		LAST 12 MONTHS	
	Actual This Year	% Change From Last Year	Average This Year	% Change From Last Year	Average This Year	% Change From Last Year
EMERGENCY DEPARTMENT VISITS						
Cedar Hill Regional Medical Center	4244		4046		2633	
Children's National Hospital	7,008	1.37	6,326	-4.66	5,542	-7.56
Children's National Hospital at CHRMC	1460		1159		671	
Children's National Hospital at UMC					1,176	-43.99
George Washington University Hospital	4,638	5.27	4,548	1.07	4,328	1.07
Howard University Hospital	3,614	-8.37	3,595	-8.47	3,775	-4.77
MedStar Georgetown University Hospital	3,481	6.03	3,405	5.27	3,426	9.37
MedStar Washington Hospital Center	6,428	-0.82	6,315	2.23	6,443	1.68
Sibley Memorial Hospital	3,531	2.73	3,287	-3.94	3,261	-1.77
United Medical Center					2,079	-28.40
ACUTE TOTAL	34404	2.09	32682	-0.92	33335	4.06

Table 16: Emergency Department Visits by Hospital Previous 15 Months

Emergency Department Admissions - previous 15 months															
	Oct-24	Nov-24	Dec-24	Jan-25	Feb-25	Mar-25	Apr-25	May-25	Jun-25	Jul-25	Aug-25	Sep-25	Oct-25	Nov-25	Dec-25
Cedar Hill Regional Medical Center							1797	3391	3299	3324	3667	3983	4071	3822	4244
Children's National Hospital @ CHRMC							564	958	815	664	679	895	1050	967	1460
Children's National Hospital @ UMC	2262	2084	2364	2061	2023	2153	820								
Children's National Hospital	6611	6381	6913	6098	6011	6645	6208	622	5450	4689	4891	6911	6126	5844	7008
George Washington University Hospital	4716	4379	4406	4306	3633	3933	4272	4120	4244	4549	4639	4600	4622	4385	4638
Howard University Hospital	4034	3806	3944	3851	3640	3975	3964	3853	3680	3936	3835	3785	3780	3392	3614
MedStar Georgetown University Hospital	3410	3011	3283	3426	3166	3512	3387	3482	3433	3529	3474	3492	3500	3234	3481
MedStar Washington Hospital Center	6296	5755	6481	6855	5879	6705	6446	6664	6486	6745	6335	6256	6453	6065	6428
Sibley Memorial Hospital	3655	3174	3437	3227	2871	3093	3436	3321	3302	3485	3122	3407	3345	2986	3531
United Medical Center	3000	2682	2873	2825	2384	2518	587	0	0						
TOTAL	33984	31272	33701	32649	29607	32534	31481	26411	30709	30921	30642	33329	32947	30695	34404
					lowest			highest							

Chart 7: Emergency Department Visits Aggregate – Most Recent 15 Months



Ambulatory Surgeries

Table 17: Ambulatory Surgeries by Hospital Current Compared with Previous Intervals

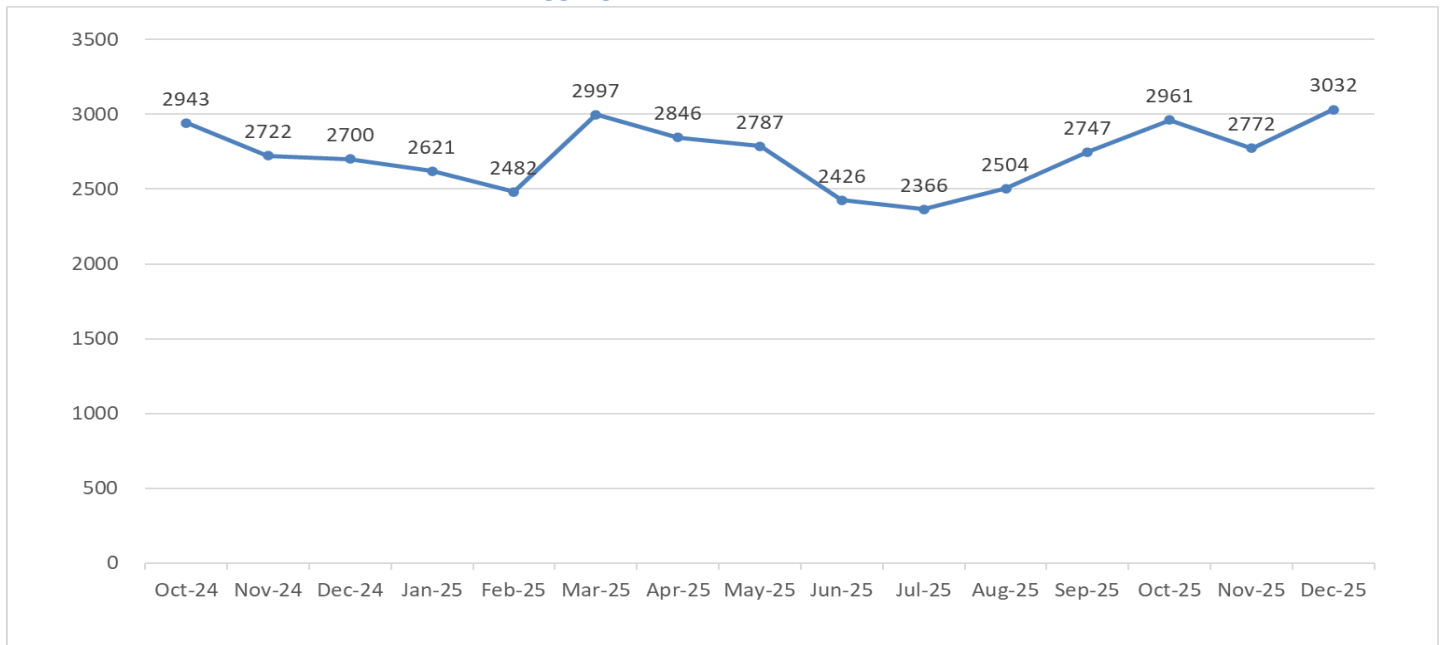
	CURRENT MONTH		LAST 3 MONTHS		LAST 12 MONTHS	
	Actual This Year	% Change From Last Year	Average This Year	% Change From Last Year	Average This Year	% Change From Last Year
AMBULATORY SURGERIES						
Cedar Hill Regional Medical Center	5		4		3	
Children's National Hospital	1,391	17.78	1,360	4.83	1,355	2.70
George Washington University Hospital	1,008	-6.06	1,040	-10.88	1,062	-9.24
Howard University Hospital	409	-11.66	428	-15.18	442	-15.71
MedStar Georgetown University Hospital	958	14.87	919	10.72	867	7.12
MedStar Washington Hospital Center	836	-4.02	854	-6.40	906	0.82
Sibley Memorial Hospital	751	-1.57	759	-4.57	765	2.05
United Medical Center					44	-54.11
ACUTE TOTAL	5358	2.41	5364	-3.53	5443	-2.22

Observation Patients

Table 18: Observation Admissions by Hospital Current Compared with Previous Intervals

	CURRENT MONTH		LAST 3 MONTHS		LAST 12 MONTHS	
	Actual This Year	% Change From Last Year	Average This Year	% Change From Last Year	Average This Year	% Change From Last Year
OBSERVATIONS PATIENTS						
Acute						
Cedar Hill Regional Medical Center	44		43		17	
Children's National Hospital	1,526	32.35	1,448	21.00	1,191	8.59
George Washington University Hospital	113	15.31	104	5.07	104	8.77
Howard University Hospital	80	-1.23	74	-19.34	80	-14.68
MedStar Georgetown University Hospital	407	21.13	416	24.53	395	15.65
MedStar Washington Hospital Center	613	5.15	603	4.51	604	5.94
Sibley Memorial Hospital	249	-21.70	234	-32.27	286	-13.46
United Medical Center					103	-40.80
ACUTE TOTAL	3032	12.30	2922	4.78	2780	2.88

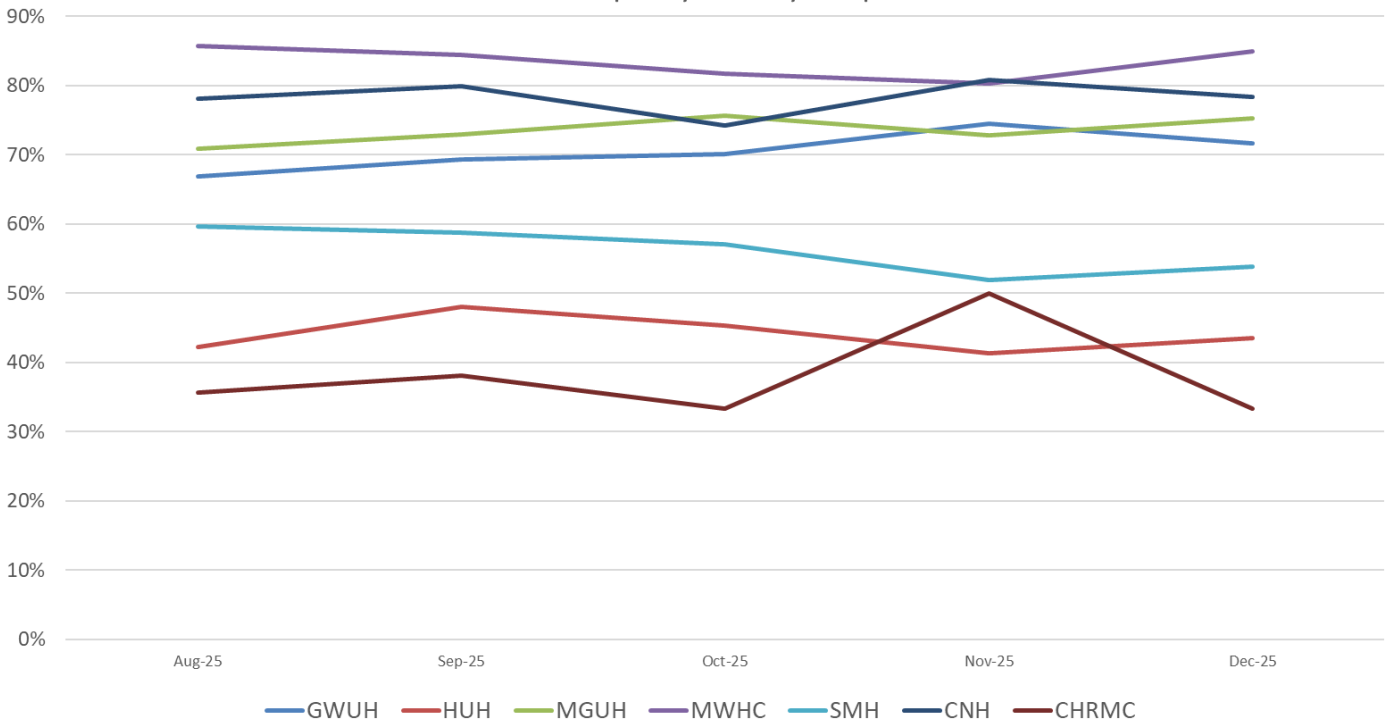
Chart 8: Observation Patient Admissions Aggregate – Most Recent 15 Months



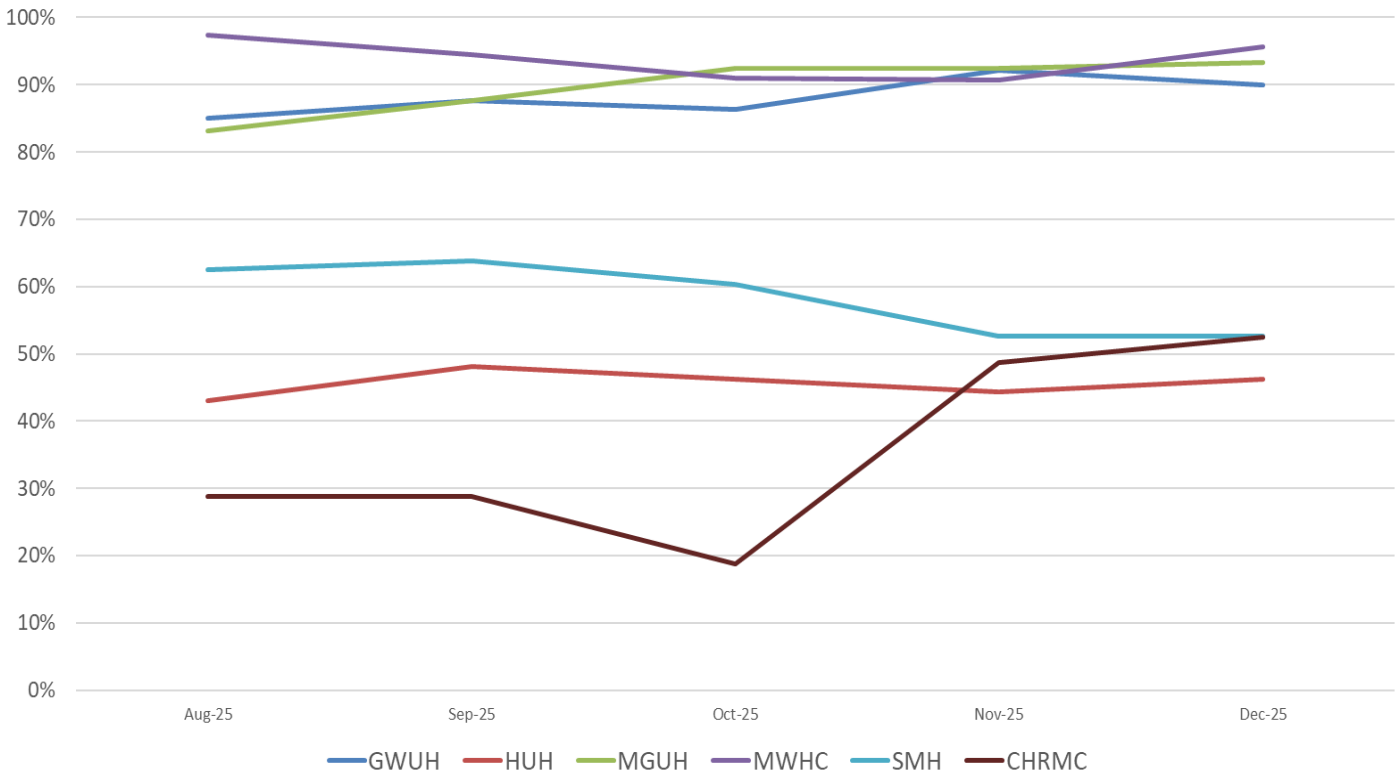
Average Daily Census by Hospital and Service

Occupancy Rates By Unit Type Acute Care Hospitals – 2025

Total Occupancy Rate by Hospital

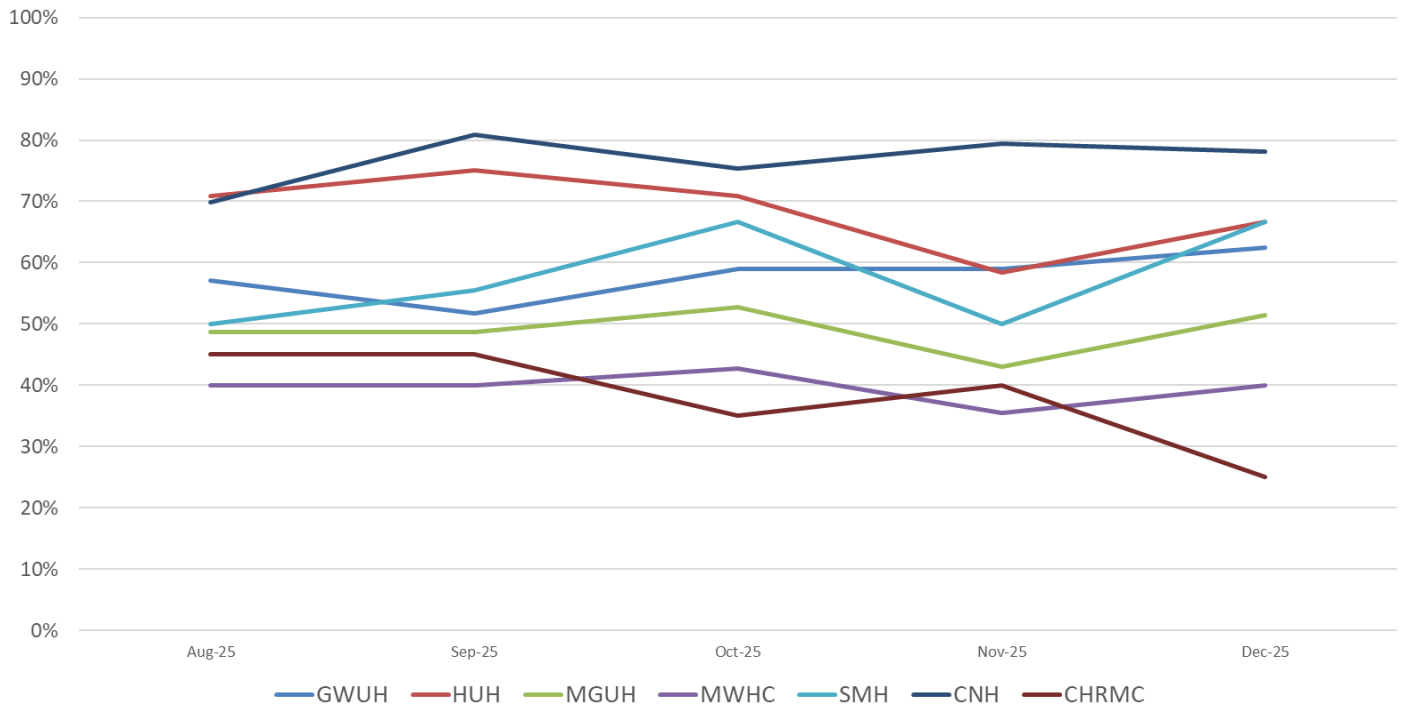


Med-Surg Occupancy Rate by Hospital

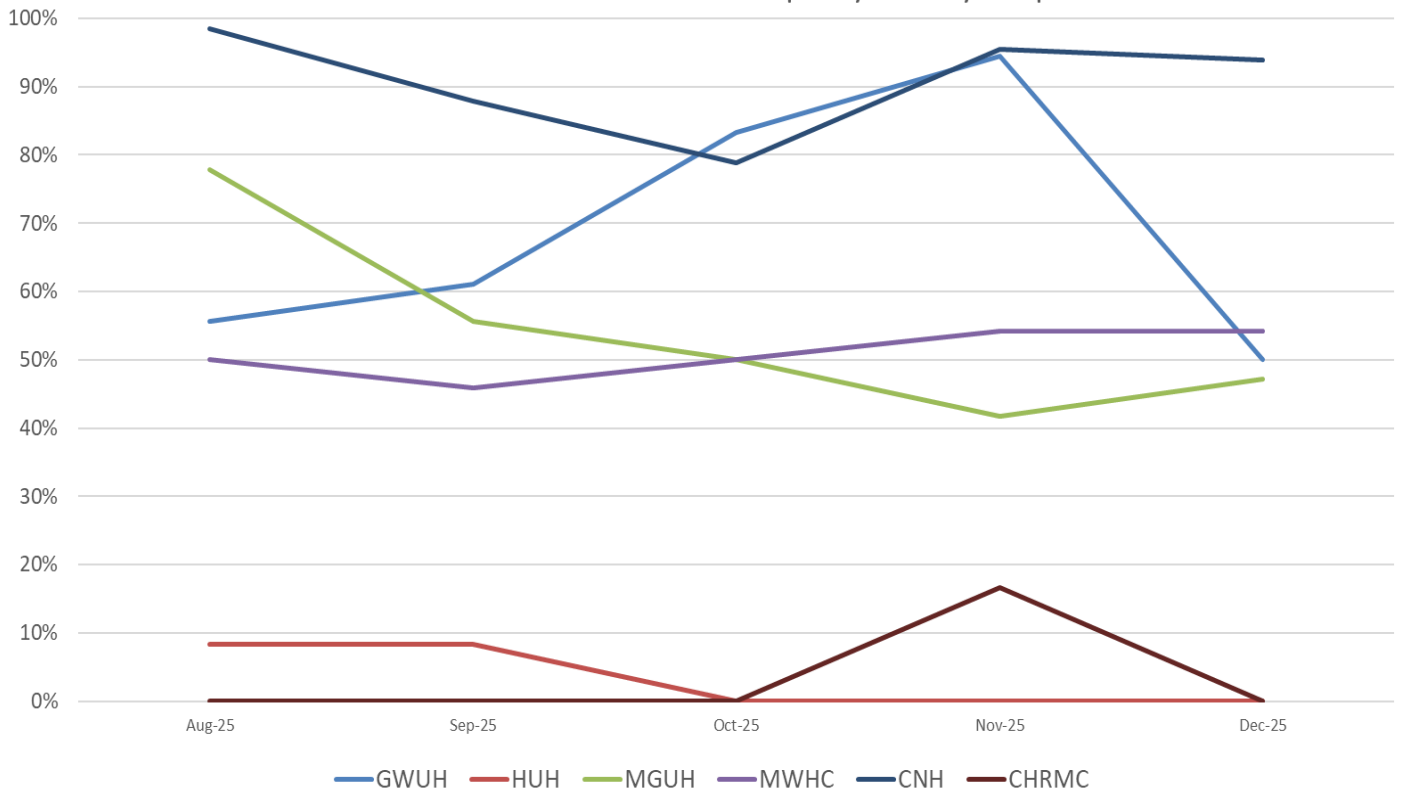


Occupancy Rates By Unit Type Acute Care Hospitals – 2025

ICU Occupancy Rate by Hospital

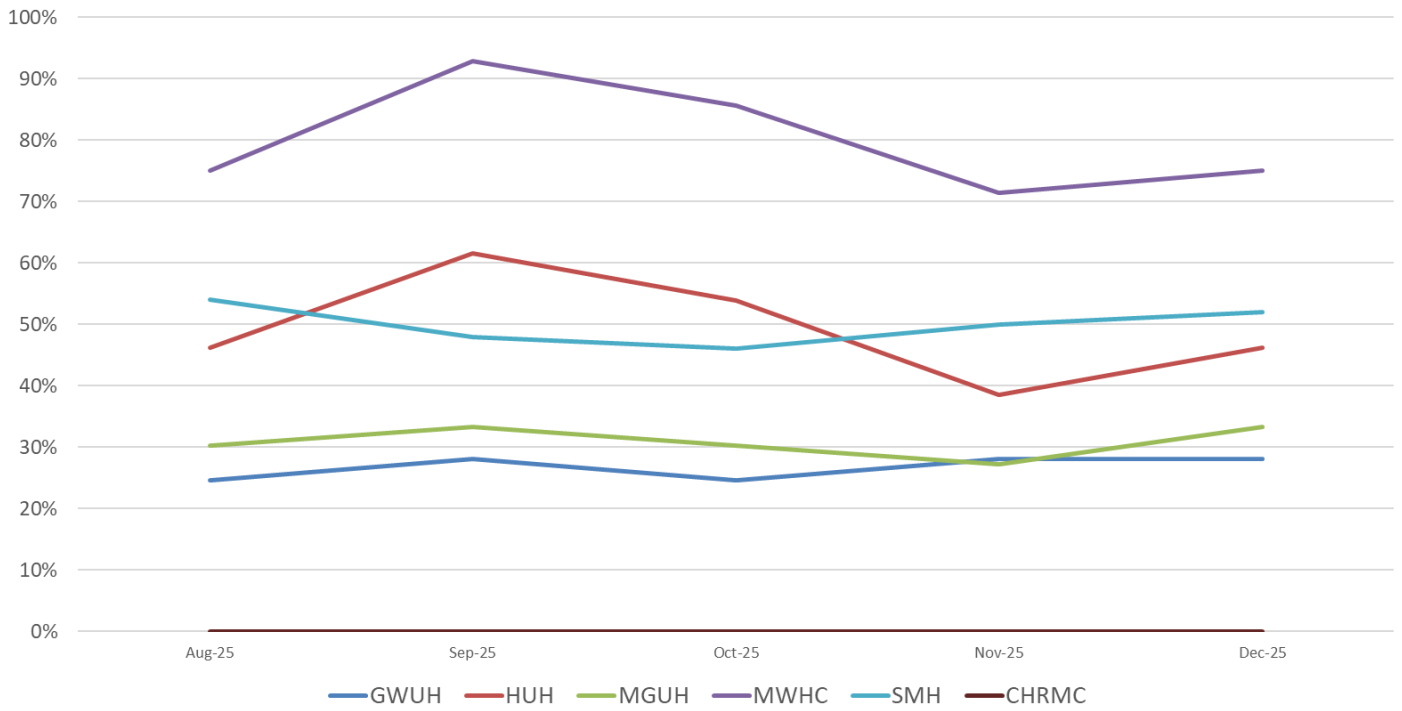


Neonatal Intensive Care Unit Occupancy Rate by Hospital

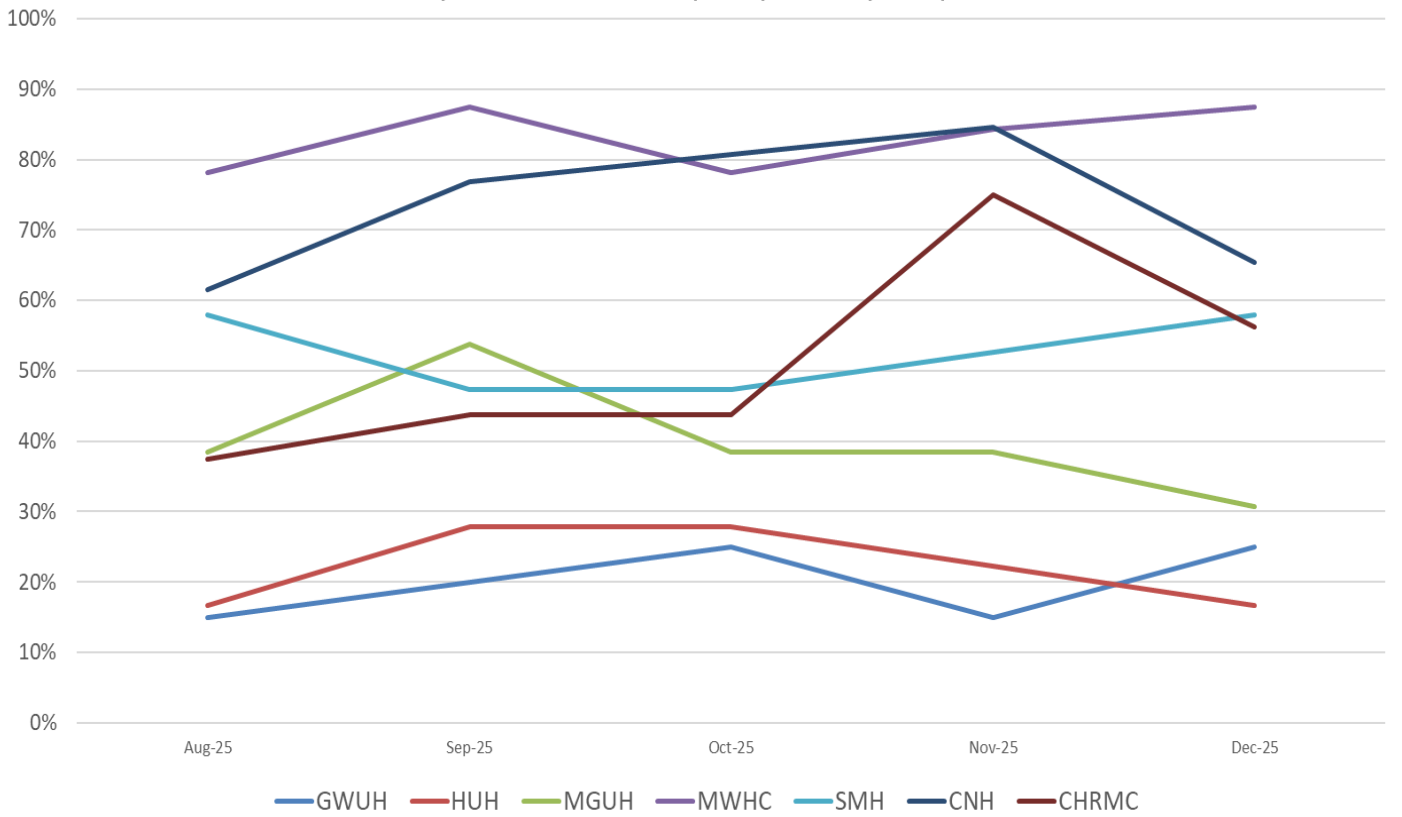


Occupancy Rates By Unit Type Acute Care Hospitals – 2025

OB-GYN Occupancy Rate by Hospital

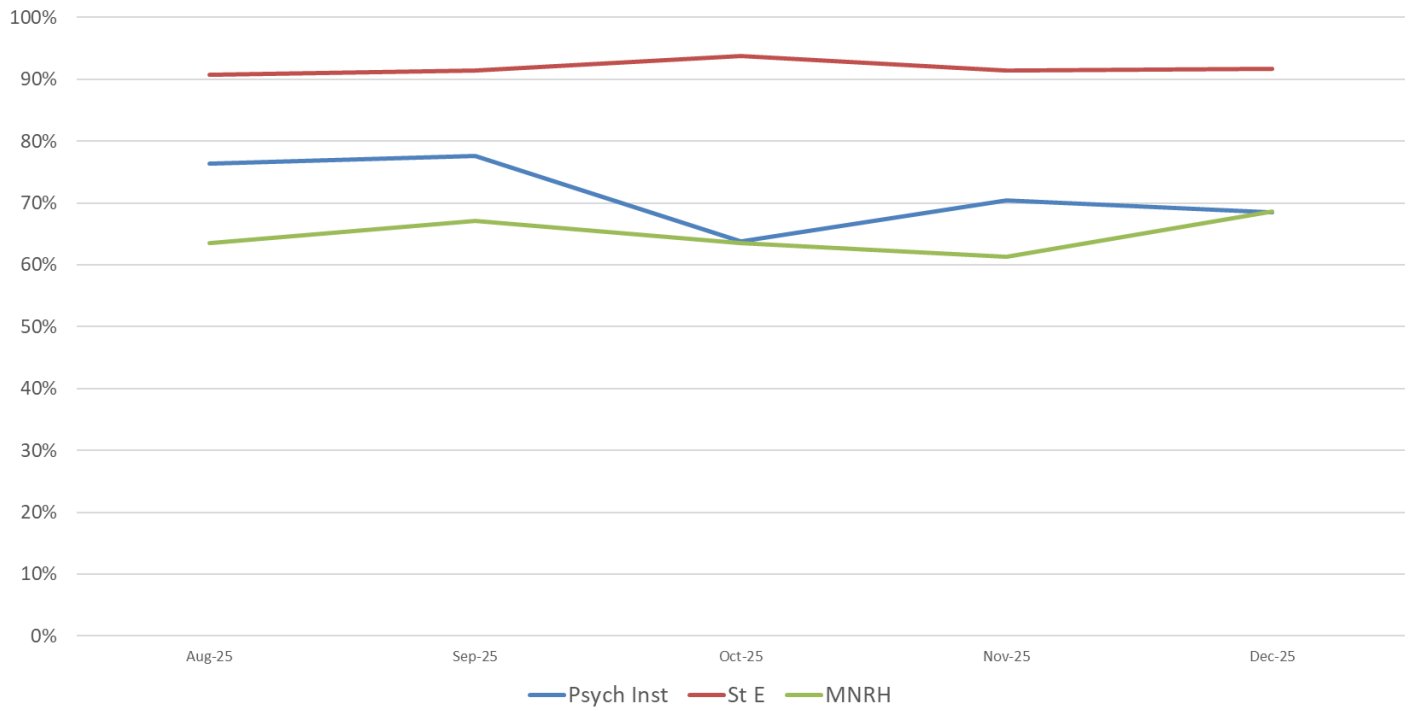


Psychiatric Unit Occupancy Rate by Hospital

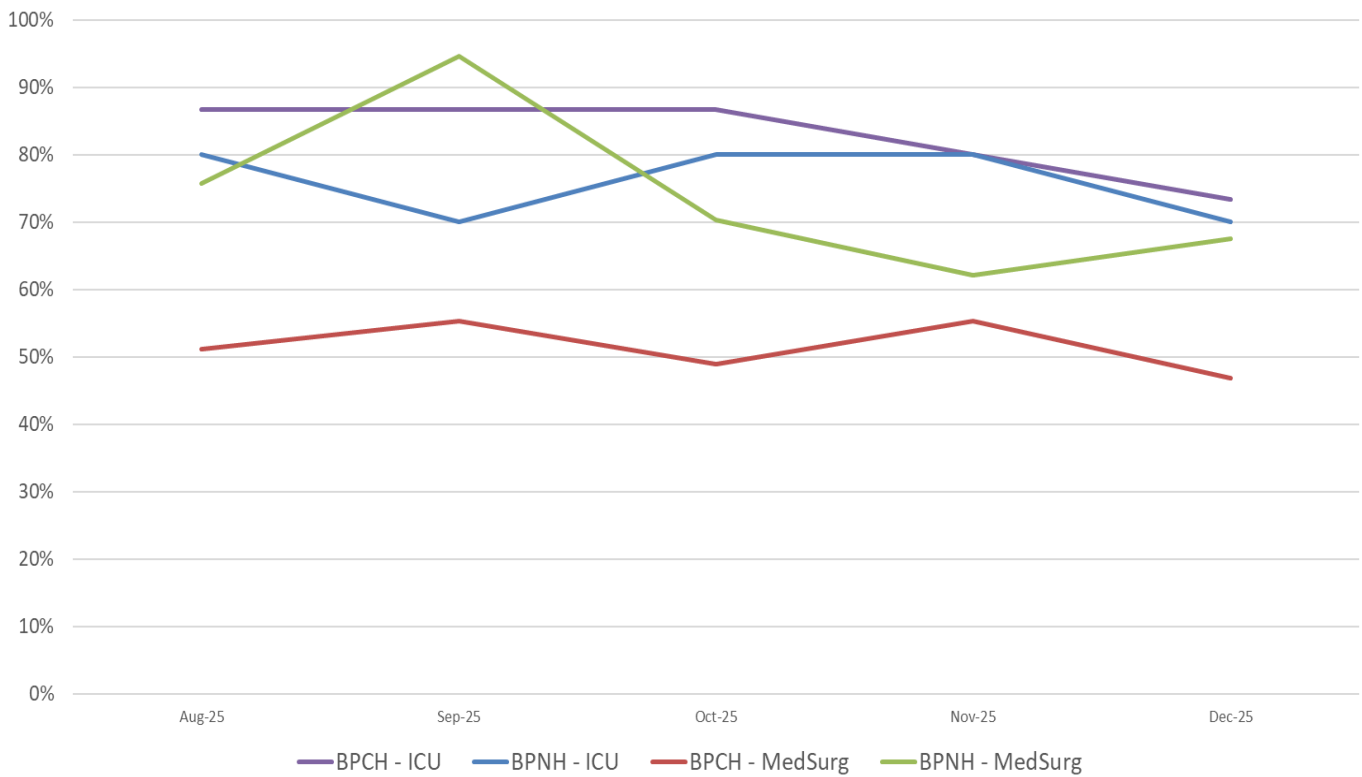


Occupancy Rates Specialty Hospitals - 2025

Specialty Facility Occupancy Rate by Hospital



Long Term Acute Care Facility Occupancy Rate by Hospital



Occupancy Rates Specialty Hospitals - 2025

Skilled Nursing Facility Occupancy Rate by Hospital

