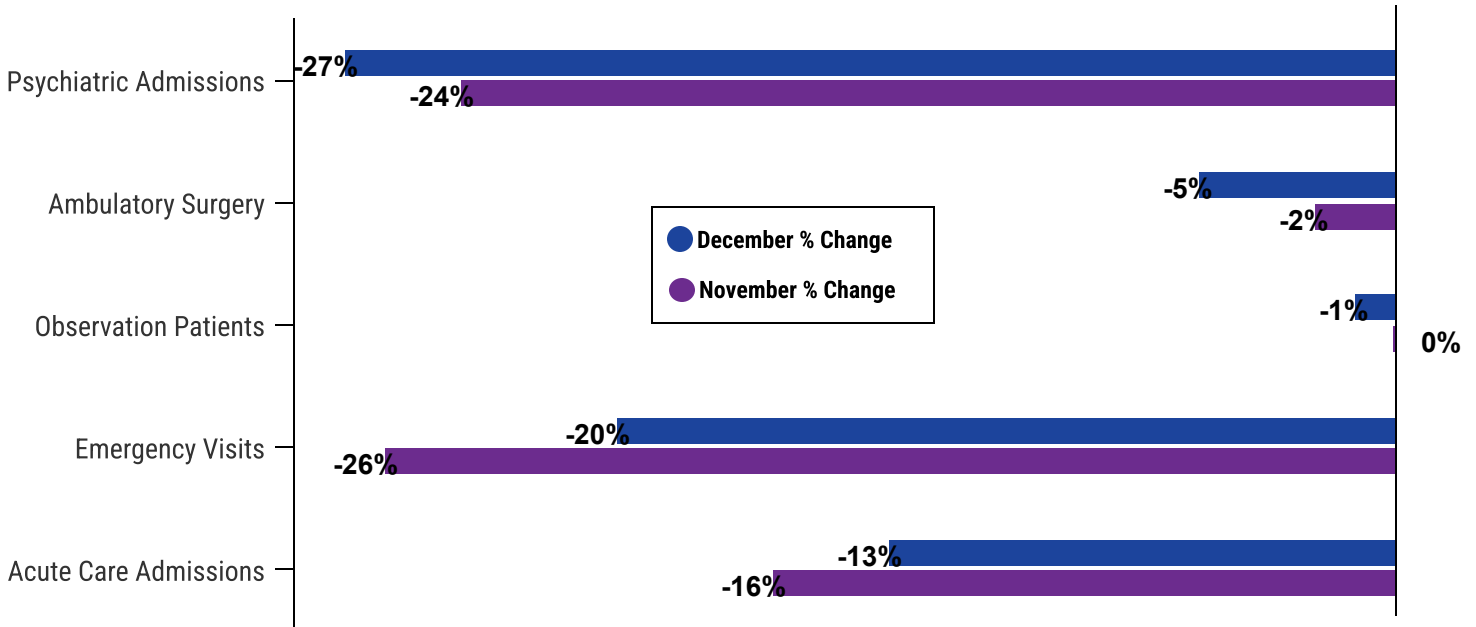


Monthly Utilization Report December 2024

Highlights

Three out of five of the focus utilization metrics saw a decrease in volume from November to December 2024. Observation admissions showed only a small decline compared to January 2020 baseline going from 0% in November to -1% below baseline in December. Ambulatory surgeries and psychiatric admissions also showed a relatively small decline compared to baseline going from -2% to -5% and -24% to -27% respectively. Emergency department visits and acute care admissions present a slight uptick in volumes respectively going from -26% to -20%, and -16% to -13% below baseline as shown in Fig. 1 below.

Fig 1: Acute Care Hospitals, Percentage Change November - December 2024 to January 2020



See Next Page for More Data

Monthly Utilization Report December 2024

Highlights

The shift in psychiatric admissions remains this month as volume continue to remain below the median for the reported period as shown in Fig. 2 below. Although not a statistical shift, specialty admissions show a similar pattern in recent months as shown in Fig. 3 below.

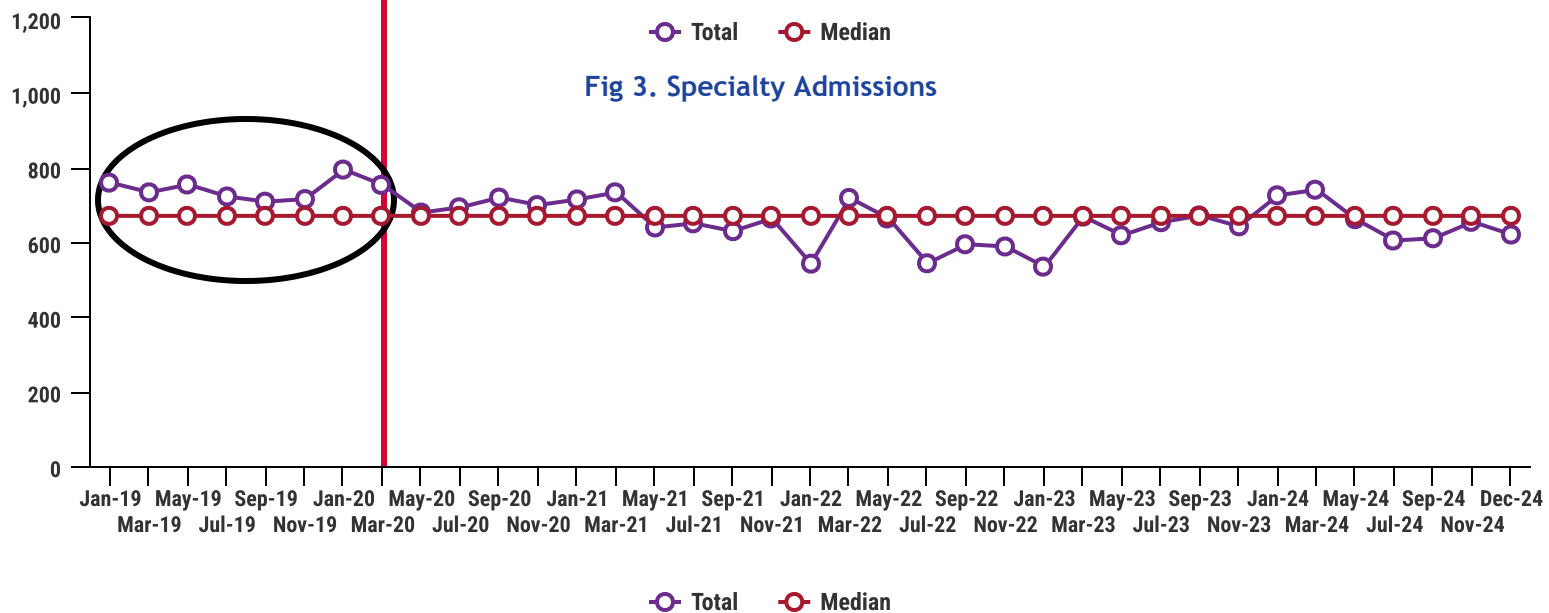
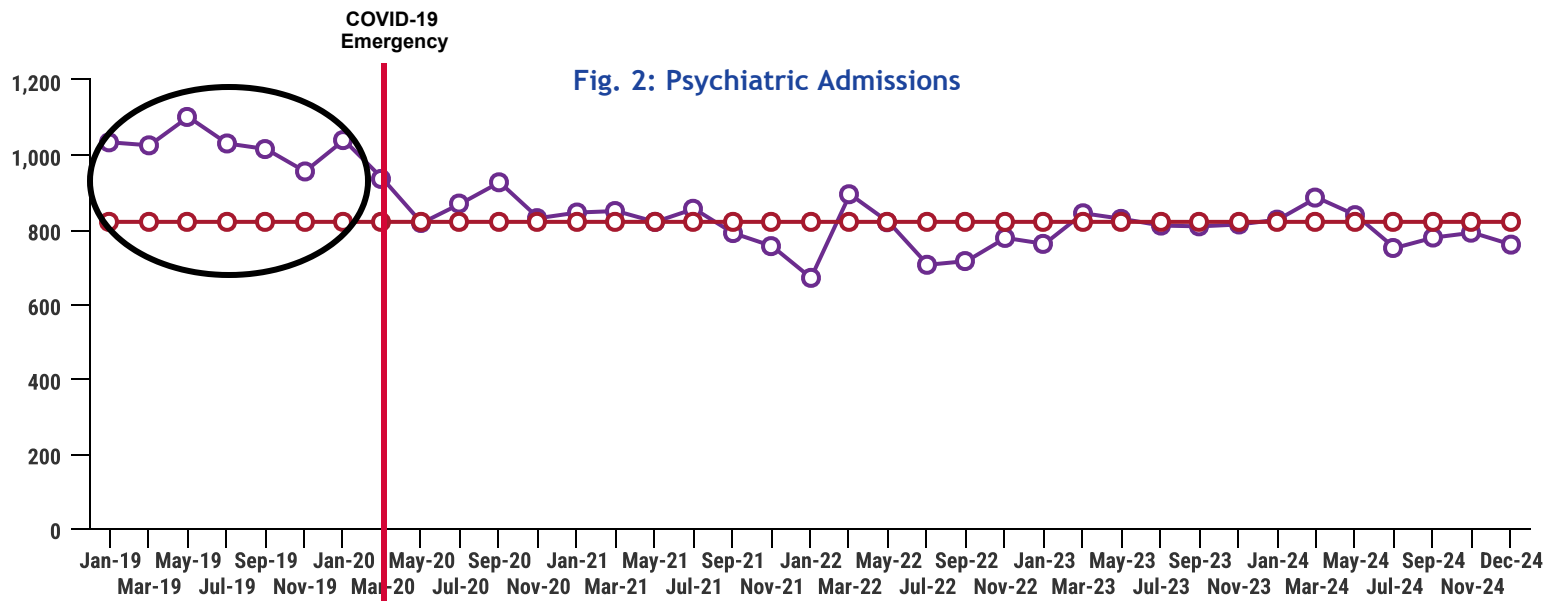


Table of Contents

Admissions	3
Table 1: Acute Care Hospitals – Current Admissions Compared to Previous Intervals.....	3
Table 2: Acute Care Hospitals – Admissions Previous 15 Months.....	3
Chart 1: Acute Care Hospitals – Aggregate Admissions Most Recent 15 Months.....	3
Table 3: Specialty Care Hospitals – Current Admissions Compared to Previous Intervals.....	4
Table 4: Specialty Care Hospitals – Admissions Previous 15 Months by Hospital.....	4
Chart 2: Specialty Care Hospitals – Aggregate Admissions Most Recent 15 Months.....	4
Patient Days	5
Table 5: Patient Days for Acute Care and Specialty Care Hospitals-Current Compared to Previous Intervals.....	5
Psychiatric Admissions and Patient Days	6
Table 6: Psychiatric Admissions and Patient Days Current Compared to Previous Intervals.....	6
Table 7: Psychiatric Admissions Previous 15 Months by Hospital.....	7
Chart 3: Acute Care Hospitals and Psychiatric Institutions - Psychiatric Admissions Aggregate Most Recent 15 Months....	7
Table 8: Civil Commitment Admissions – Admissions Previous 15 Months by Hospital.....	8
Chart 4: Civil Commitment Admissions – Aggregate Admissions Most Recent 15 Months.....	8
Rehabilitation Admissions and Patient Days	9
Table 9: Rehabilitation Admissions and Patient Days Current Compared with Previous Intervals	9
Skilled Nursing Facility Admissions and Patient Days	9
Table 10: SNF Admissions and Patient Days Current Compared with Previous Intervals	9
Newborn and Neonatal ICU Data: Admissions and Patient Days	10
Table 11: Newborn Admissions and Patient Days – Current Compared to Previous Intervals.....	10
Table 12: Newborn Admissions by Hospital Previous 15 Months.....	10
Chart 5: Newborn Admissions – Most Recent 15 Months.....	10
Table 13: Neonatal ICU Admissions and Patient Days – Current Compared to Previous Intervals.....	11
Table 14: Neonatal Admissions by Hospital Previous 15 Months.....	11
Chart 6: Neonatal Admissions Aggregate Most Recent 15 Months.....	11
Emergency Department Visits	12
Table 15: Emergency Department Visits – Current Compared to Previous Intervals.....	12
Table 16: Emergency Department Visits by Hospital Previous 15 Months.....	12
Chart 7: Emergency Department Visits Aggregate – Most Recent 15 Months.....	12
Ambulatory Surgeries	13
Table 17: Ambulatory Surgeries by Hospital Current Compared with Previous Intervals	13
Observation Patients	14
Table 18: Observation Admissions by Hospital Current Compared with Previous Intervals	14
Chart 8: Observation Patient Admissions Aggregate – Most Recent 15 Months.....	14
Average Daily Census by Hospital by Service	15

Admissions

Note: In this section, “Admissions” excludes newborns and SNF patients

Table 1: Acute Care Hospitals - Current Admissions Compared to Previous Intervals

	CURRENT MONTH		LAST 3 MONTHS		LAST 12 MONTHS	
	Actual This Year	% Change From Last Year	Average This Year	% Change From Last Year	Average This Year	% Change From Last Year
ADMISSIONS						
Acute						
Children's National Hospital	1,274	3.16	1,238	-2.13	1,168	-0.57
George Washington University Hospital	1,325	-3.92	1,325	-6.95	1,346	-2.82
Howard University Hospital	560	-10.54	536	-11.89	570	-6.01
MedStar Georgetown University Hospital	1,266	8.21	1,301	7.11	1,285	9.08
MedStar Washington Hospital Center	2,531	1.36	2,517	0.07	2,482	0.29
Sibley Memorial Hospital	1,084	13.99	1,060	6.64	1,036	7.48
United Medical Center	213	-24.47	214	-22.77	248	-15.02
ACUTE TOTAL	8253	1.39	8191	-1.29	8134	0.75

Table 2: Acute Care Hospitals – Admissions Previous 15 Months

Acute Care Hospital Admissions - previous 15 months															
	Oct-23	Nov-23	Dec-23	Jan-24	Feb-24	Mar-24	Apr-24	May-24	Jun-24	Jul-24	Aug-24	Sep-24	Oct-24	Nov-24	Dec-24
Children's National Hospital	1287	1272	1235	1181	1123	1208	1217	1221	1032	1020	1070	1225	1234	1205	1274
George Washington University Hospital	1535	1359	1379	1359	1340	1416	1378	1437	1290	1319	1316	1317	1340	1311	1325
Howard University Hospital	634	565	626	600	565	598	578	607	536	575	610	562	533	515	560
MedStar Georgetown University Hospital	1256	1219	1170	1247	1279	1292	1347	1310	1218	1327	1267	1230	1358	1280	1266
MedStar Washington Hospital Center	2572	2478	2497	2525	2377	2447	2435	2541	2500	2483	2575	2347	2576	2445	2531
Sibley Memorial Hospital	1030	1000	951	1011	1039	1032	1039	1073	965	1018	1089	984	1085	1010	1084
United Medical Center	230	318	282	278	264	276	254	302	234	257	235	234	223	205	213
TOTAL	8544	8211	8140	8201	7987	8269	8248	8491	7775	7999	8162	7899	8349	7971	8253
					lowest			highest							

Chart 1: Acute Care Hospitals – Aggregate Admissions Most Recent 15 Months

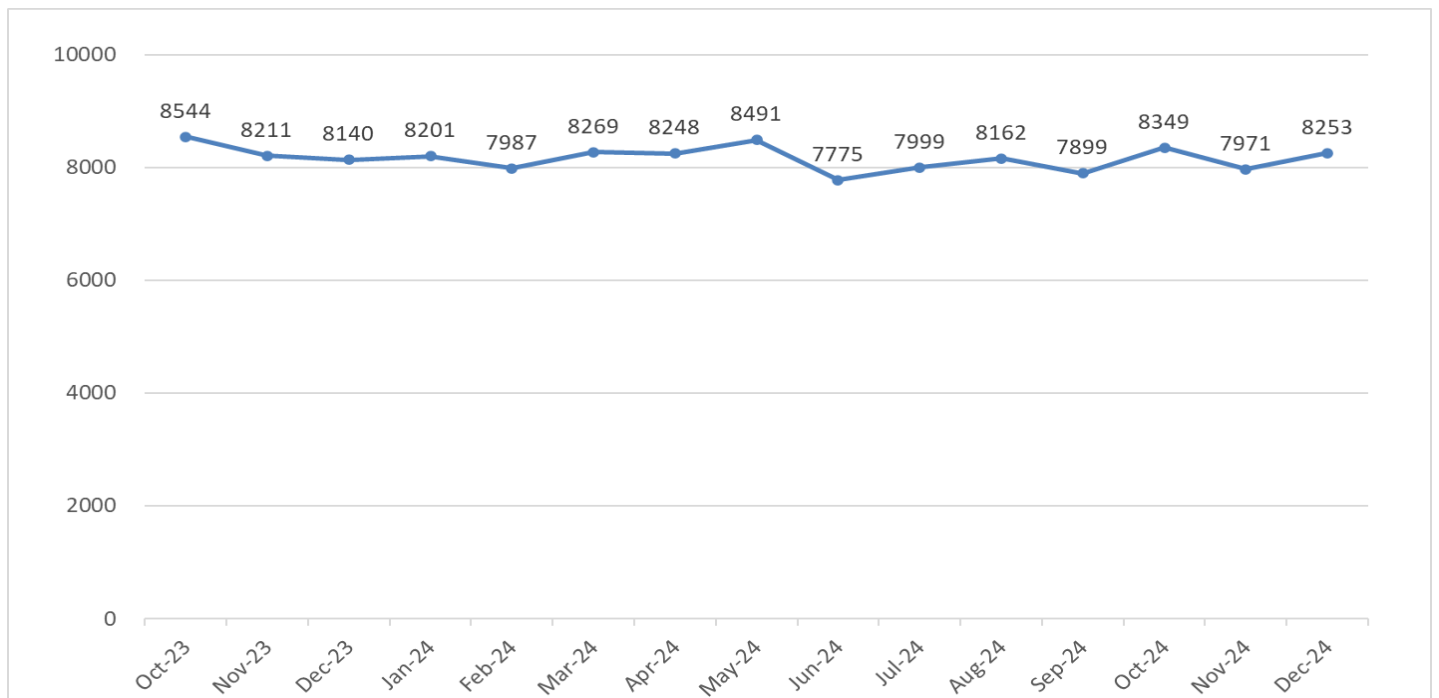


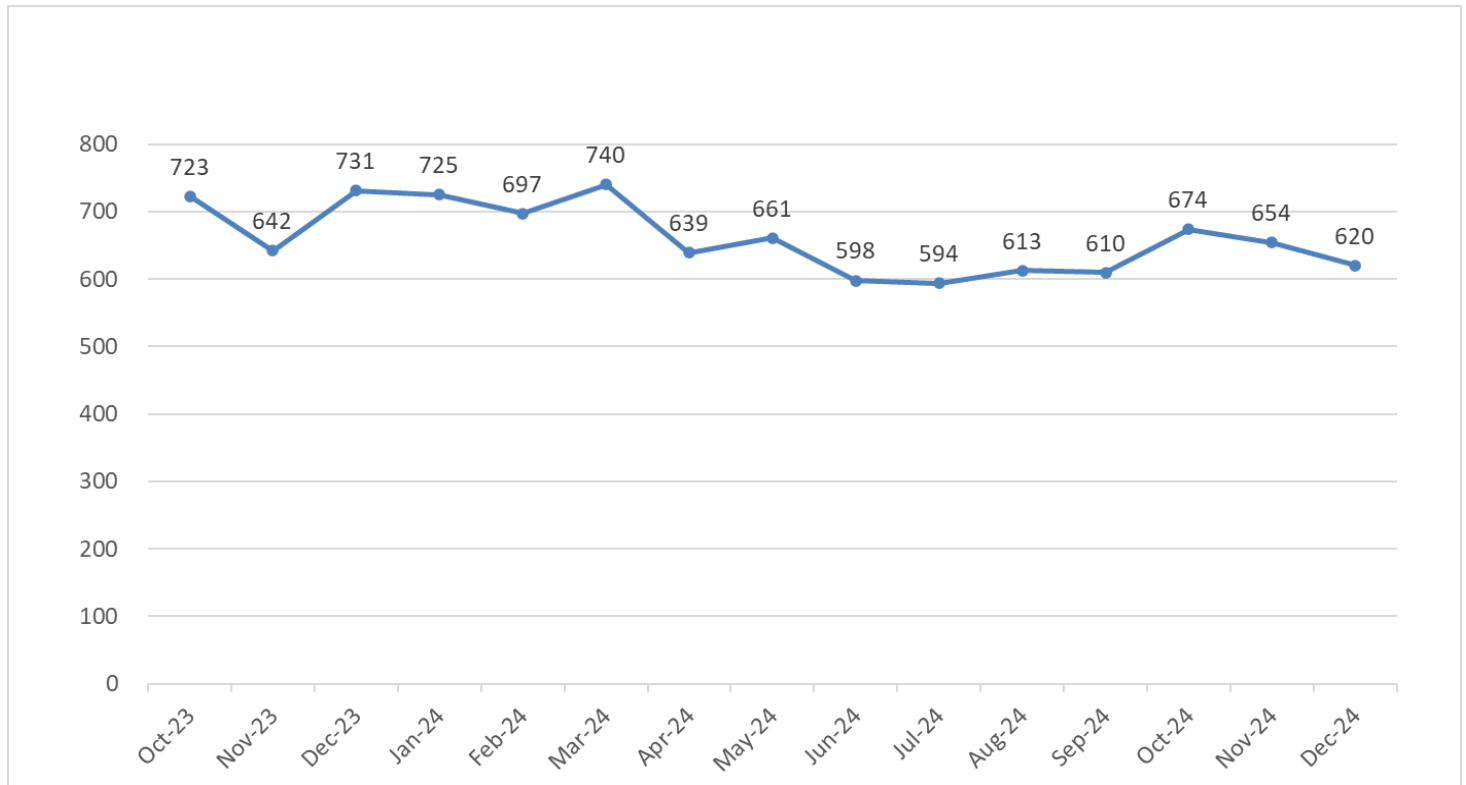
Table 3: Specialty Care Hospitals – Current Admissions Compared to Previous Intervals

	CURRENT MONTH		LAST 3 MONTHS		LAST 12 MONTHS	
	Actual This Year	% Change From Last Year	Average This Year	% Change From Last Year	Average This Year	% Change From Last Year
ADMISSIONS						
Acute						
BridgePoint Hospital -Capitol Hill	44	10.00	47	16.67	44	2.13
BridgePoint Hospital -National Harborside	30	-31.82	35	-6.31	36	0.94
MedStar National Rehabilitation Hospital	154	-14.92	153	-10.55	156	-4.15
Psychiatric Institute of Washington	360	-17.05	382	-8.97	384	3.62
Saint Elizabeths Hospital	32	0.00	33	6.45	32	16.72
ACUTE TOTAL	620	-15.18	649	-7.06	652	1.95

Table 4: Specialty Care Hospitals – Admissions Previous 15 Months by Hospital

Specialty Hospital Admissions - previous 15 months															
	Oct-23	Nov-23	Dec-23	Jan-24	Feb-24	Mar-24	Apr-24	May-24	Jun-24	Jul-24	Aug-24	Sep-24	Oct-24	Nov-24	Dec-24
MedStar National Rehabilitation Hospital	177	154	181	174	178	165	147	153	154	151	148	145	156	148	154
Psychiatric Institute of Washington	440	386	434	440	406	442	370	381	348	345	367	364	403	384	360
Saint Elizabeths Hospital	26	35	32	12	40	41	36	36	29	30	32	29	36	31	32
BridgePoint Hospital -Capitol Hill	42	38	40	54	39	50	47	48	37	31	36	46	41	55	44
BridgePoint Hospital -National Harborside	38	29	44	45	34	42	39	43	30	37	30	26	38	36	30
TOTAL	723	642	731	725	697	740	639	661	598	594	613	610	674	654	620
					lowest		highest								

Chart 2: Specialty Care Hospitals – Aggregate Admissions Most Recent 15 Months



Patient Days

Note: In this section, "Patient Days" excludes newborns and SNF patients

Table 5: Patient Days for Acute Care and Specialty Care Hospitals – Current Compared with Previous Intervals

	CURRENT MONTH		LAST 3 MONTHS		LAST 12 MONTHS	
	Actual This Year	% Change From Last Year	Average This Year	% Change From Last Year	Average This Year	% Change From Last Year
PATIENT DAYS						
Acute						
Children's National Hospital	6,937	11.06	7,096	7.95	6,722	2.99
George Washington University Hospital	8,522	0.33	8,265	-2.03	8,265	-0.68
Howard University Hospital	3,069	-10.34	3,209	-1.37	3,345	-1.83
MedStar Georgetown University Hospital	10,921	13.78	11,123	14.19	10,696	11.25
MedStar Washington Hospital Center	20,170	2.30	20,102	4.76	19,777	2.17
Sibley Memorial Hospital	4,918	20.10	4,570	2.97	4,379	1.82
United Medical Center	1,435	-24.39	1,395	-19.26	1,627	-1.98
ACUTE TOTAL	55972	4.68	55760	4.50	54810	3.05
BridgePoint Hospital -Capitol Hill	1,127	-3.01	1,107	0.94	1,106	-6.79
BridgePoint Hospital -National Harborside	901	-16.65	938	-11.95	1,042	1.41
MedStar National Rehabilitation Hospital	2,977	0.85	2,712	-2.42	2,729	-2.03
Psychiatric Institute of Washington	2,519	-30.14	2,601	-26.91	3,004	-6.77
Saint Elizabeths Hospital	8,193	6.42	8,035	6.89	8,094	15.09
SPECIALTY TOTAL	15717	-4.75	15394	-3.90	15975	4.72
GRAND TOTAL	71689	2.46	71154	2.56	70785	3.42

Psychiatric Admissions and Patient Days

Table 6: Psychiatric Admissions and Patient Days Current Compared to Previous Intervals

	CURRENT MONTH		LAST 3 MONTHS		LAST 12 MONTHS	
	Actual This Year	% Change From Last Year	Average This Year	% Change From Last Year	Average This Year	% Change From Last Year
PSYCH ADMISSIONS						
Acute						
Children's National Hospital	52	-16.13	58	-4.40	59	7.61
George Washington University Hospital	36	-18.18	37	-22.22	42	-9.82
Howard University Hospital	24	-7.69	27	1.25	30	-2.20
MedStar Georgetown University Hospital	35	12.90	31	16.25	30	0.28
MedStar Washington Hospital Center	121	8.04	110	-0.30	105	-5.56
Sibley Memorial Hospital	42	-4.55	49	4.29	49	8.07
United Medical Center	57	-26.92	62	-25.40	65	-30.48
ACUTE TOTAL	367	-7.56	374	-6.97	380	-7.77
Specialty						
Psychiatric Institute of Washington	360	-17.05	382	-8.97	384	3.62
Saint Elizabeths Hospital	32	0.00	33	6.45	32	16.72
SPECIALTY TOTAL	392	-15.88	415	-7.91	416	4.52
GRAND TOTAL	759	-12.05	789	-7.47	796	-1.73
PSYCH PATIENT DAYS						
Acute						
Children's National Hospital	479	-21.22	603	-0.50	595	-3.27
George Washington University Hospital	194	-8.49	176	-16.16	184	-22.07
Howard University Hospital	119	7.21	130	-2.01	145	-5.75
MedStar Georgetown University Hospital	115	-13.53	137	-8.46	135	-0.61
MedStar Washington Hospital Center	815	-5.56	785	-4.77	780	-2.37
Sibley Memorial Hospital	306	8.90	324	-3.85	347	-4.73
United Medical Center	253	-26.67	269	-17.50	280	-30.31
ACUTE TOTAL	2281	-10.65	2424	-6.25	2465	-8.86
Specialty						
Psychiatric Institute of Washington, D.C.	2,519	-30.14	2,601	-26.91	3,004	-6.77
Saint Elizabeths Hospital	8,193	6.42	8,035	6.89	8,094	15.09
SPECIALTY TOTAL	10712	-5.25	10637	-3.97	11099	8.22
GRAND TOTAL	12993	-6.24	13061	-4.40	13563	4.65

Table 7: Psychiatric Admissions Previous 15 Months by Hospital

Psychiatric Admissions - previous 15 months															
	Oct-23	Nov-23	Dec-23	Jan-24	Feb-24	Mar-24	Apr-24	May-24	Jun-24	Jul-24	Aug-24	Sep-24	Oct-24	Nov-24	Dec-24
Children's National Hospital	73	47	62	62	58	60	62	66	55	51	59	60	69	53	52
George Washington University Hospital	59	41	44	42	44	45	59	48	35	36	35	49	42	34	36
Howard University Hospital	30	24	26	26	25	32	40	38	29	29	31	25	29	28	24
MedStar Georgetown University Hospital	26	23	31	31	23	32	31	37	19	27	31	39	30	28	35
MedStar Washington Hospital Center	111	108	112	110	79	109	104	96	95	113	115	107	91	118	121
Sibley Memorial Hospital	50	46	44	40	55	48	50	52	40	51	62	45	52	52	42
United Medical Center	67	103	78	63	65	76	64	84	62	58	63	60	65	63	57
Psychiatric Institute of Washington	440	386	434	440	406	442	370	381	348	345	367	364	403	384	360
Saint Elizabeths Hospital	26	35	32	12	40	41	36	36	29	30	32	29	36	31	32
TOTAL	882	813	863	826	795	885	816	838	712	740	795	778	817	791	759
					lowest		highest								

Chart 3: Acute Care Hospitals and Psychiatric Institutions– Psychiatric Admissions Aggregate Most Recent 15 Months

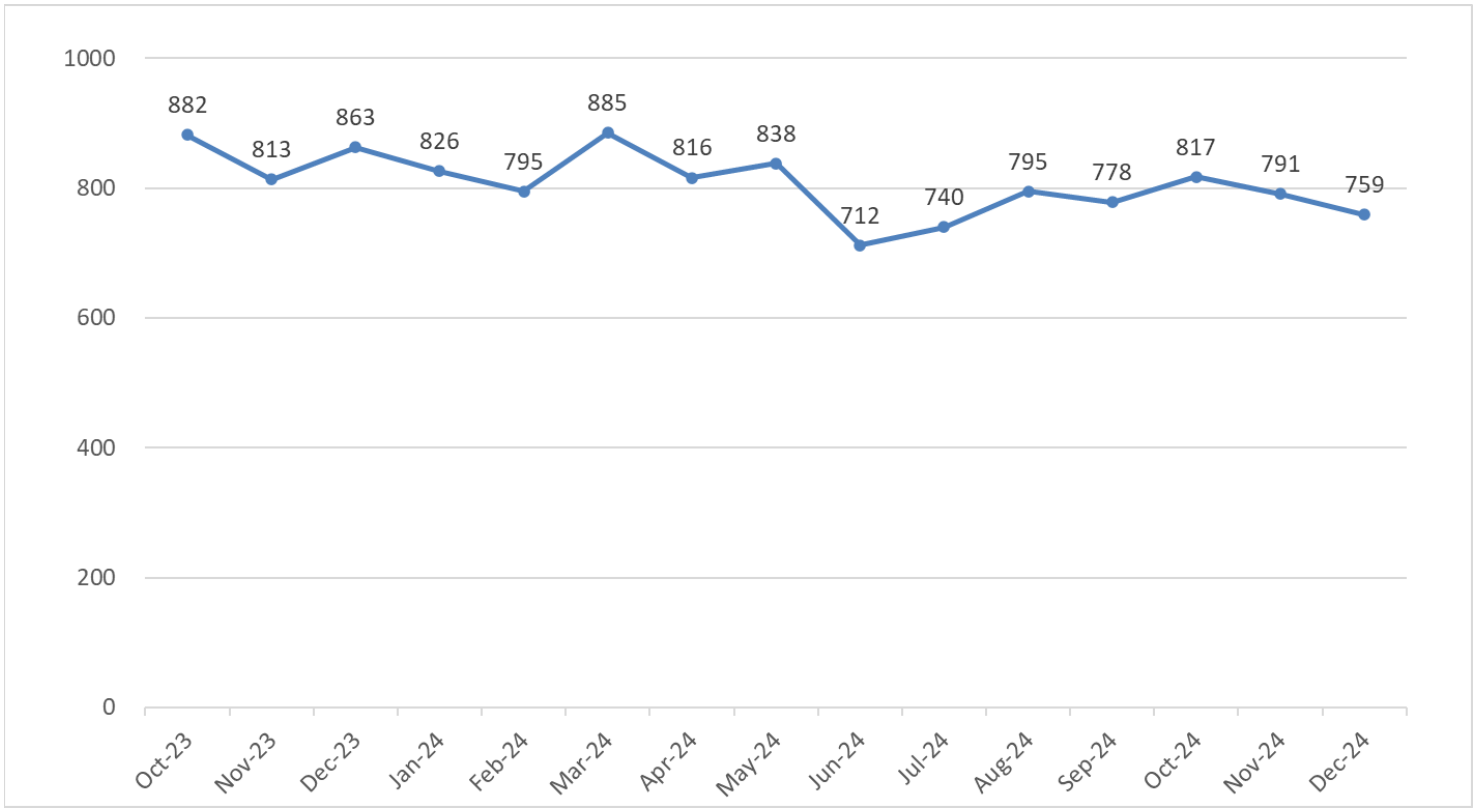
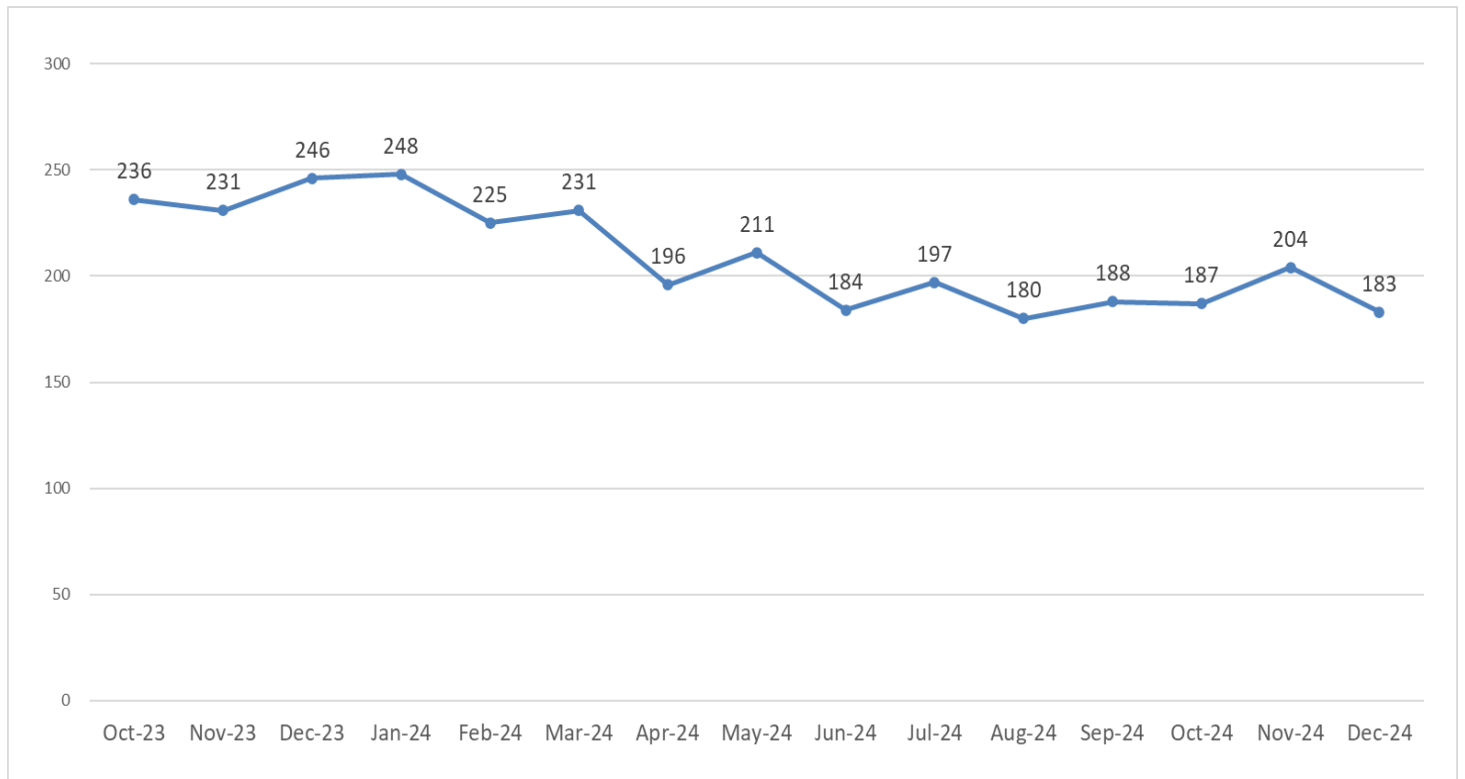


Table 8: Civil Commitment Admissions – Admissions Previous 15 Months by Hospital

Civil Commitment Admissions - previous 15 months															
	Oct-23	Nov-23	Dec-23	Jan-24	Feb-24	Mar-24	Apr-24	May-24	Jun-24	Jul-24	Aug-24	Sep-24	Oct-24	Nov-24	Dec-24
MedStar Washington Hospital Center	45	38	40	43	32	24	34	34	36	46	49	48	37	37	55
Psychiatric Institute of Washington, D.C	156	131	153	168	159	173	124	136	116	121	105	114	118	135	102
Saint Elizabeth's Hospital	0	3	5	5	4	4	2	3	2	0	1	1	2	2	2
United Medical Center	35	59	48	32	30	30	36	38	30	30	25	25	30	30	24
TOTAL	236	231	246	248	225	231	196	211	184	197	180	188	187	204	183
						lowest		highest							

Chart 4: Civil Commitment Admissions – Aggregate Admissions Most Recent 15 Months



Rehabilitation Admissions and Patient Days

Table 9: Rehabilitation Admissions and Patient Days Current Compared with Previous Intervals

	CURRENT MONTH		LAST 3 MONTHS		LAST 12 MONTHS	
	Actual This Year	% Change From Last Year	Average This Year	% Change From Last Year	Average This Year	% Change From Last Year
REHAB ADMISSIONS						
Acute						
George Washington University Hospital	34	6.25	33	-3.88	30	-6.20
Subacute Rehab						
MedStar National Rehabilitation Hospital	154	-14.92	153	-10.55	156	-4.15
GRAND TOTAL	188	-11.74	186	-9.43	186	-4.49
REHAB PATIENT DAYS						
Acute						
George Washington University Hospital	426	3.65	368	-2.56	381	1.26
Subacute Rehab						
MedStar National Rehabilitation Hospital	2,977	0.85	2,712	-2.42	2,729	-2.03
GRAND TOTAL	3403	1.19	3080	-2.44	3109	-1.63

Skilled Nursing Facility Admissions and Patient Days

Table 10: SNF Admissions and Patient Days Current Compared with Previous Intervals

	CURRENT MONTH		LAST 3 MONTHS		LAST 12 MONTHS	
	Actual This Year	% Change From Last Year	Average This Year	% Change From Last Year	Average This Year	% Change From Last Year
SNF ADMISSIONS						
Acute						
Sibley Memorial Hospital	28	40.00	31	43.08	25	25.62
ACUTE TOTAL	28	40.00	31	43.08	25	25.62
Specialty						
BridgePoint Hospital -Capitol Hill	16	-15.79	11	-52.78	20	-5.26
BridgePoint Hospital -National Harborside	14	-36.36	11	-40.00	15	-11.33
SPECIALTY TOTAL	30	-26.83	22	-47.24	35	-8.00
GRAND TOTAL	58	-4.92	53	-16.67	60	3.76
SNF PATIENT DAYS						
Acute						
Sibley Memorial Hospital	673	49.56	637	35.24	541	22.93
ACUTE TOTAL	673	49.56	637	35.24	541	22.93
Specialty						
BridgePoint Hospital -Capitol Hill	3,384	1.14	3,420	4.53	3,358	0.87
BridgePoint Hospital -National Harborside	3,568	-1.95	3,545	-2.48	3,692	2.63
SPECIALTY TOTAL	6952	-0.47	6965	0.84	7050	1.78
GRAND TOTAL	7625	2.56	7602	3.04	7591	3.05

Newborn and Neonatal ICU Data: Admissions and Patient Days

Table 11: Newborn Admissions and Patient Days– Current Compared to Previous Intervals

	CURRENT MONTH		LAST 3 MONTHS		LAST 12 MONTHS	
	Actual This Year	% Change From Last Year	Average This Year	% Change From Last Year	Average This Year	% Change From Last Year
NEWBORN ADMISSIONS						
George Washington University Hospital	140	22.81	140	-6.05	150	1.18
Howard University Hospital	51	-48.48	56	-42.71	75	-22.12
MedStar Georgetown University Hospital	69	16.95	74	9.95	69	7.09
MedStar Washington Hospital Center	258	-11.34	284	-5.12	287	-2.41
Sibley Memorial Hospital	299	1.36	310	1.86	318	1.30
ACUTE TOTAL	817	-4.78	864	-5.88	899	-1.95
NEWBORN PATIENT DAYS						
George Washington University Hospital	272	12.40	275	-0.96	290	7.81
Howard University Hospital	184	-39.67	247	-33.63	291	-16.08
MedStar Georgetown University Hospital	160	9.59	175	6.71	168	9.86
MedStar Washington Hospital Center	1,244	-6.54	1,345	-3.05	1,281	-2.98
Sibley Memorial Hospital	787	-12.26	843	-3.33	885	6.41
ACUTE TOTAL	2647	-9.38	2885	-6.13	2915	-0.19

Table 12: Newborn Admissions by Hospital Previous 15 Months

Newborn Admissions - previous 15 months															
	Oct-23	Nov-23	Dec-23	Jan-24	Feb-24	Mar-24	Apr-24	May-24	Jun-24	Jul-24	Aug-24	Sep-24	Oct-24	Nov-24	Dec-24
George Washington University Hospital	168	164	114	159	139	146	147	155	149	178	154	156	122	157	140
Howard University Hospital	105	91	99	101	88	79	69	77	78	71	76	90	50	68	51
MedStar Georgetown University Hospital	78	64	59	68	46	67	51	87	70	70	78	73	73	79	69
MedStar Washington Hospital Center	281	327	291	288	257	282	284	283	287	298	323	290	305	290	258
Sibley Memorial Hospital	320	297	295	290	319	331	290	336	312	334	368	308	327	303	299
TOTAL	952	943	858	906	849	905	841	938	896	951	999	917	877	897	817
					lowest			highest							

Chart 5: Newborn Admissions – Most Recent 15 Months

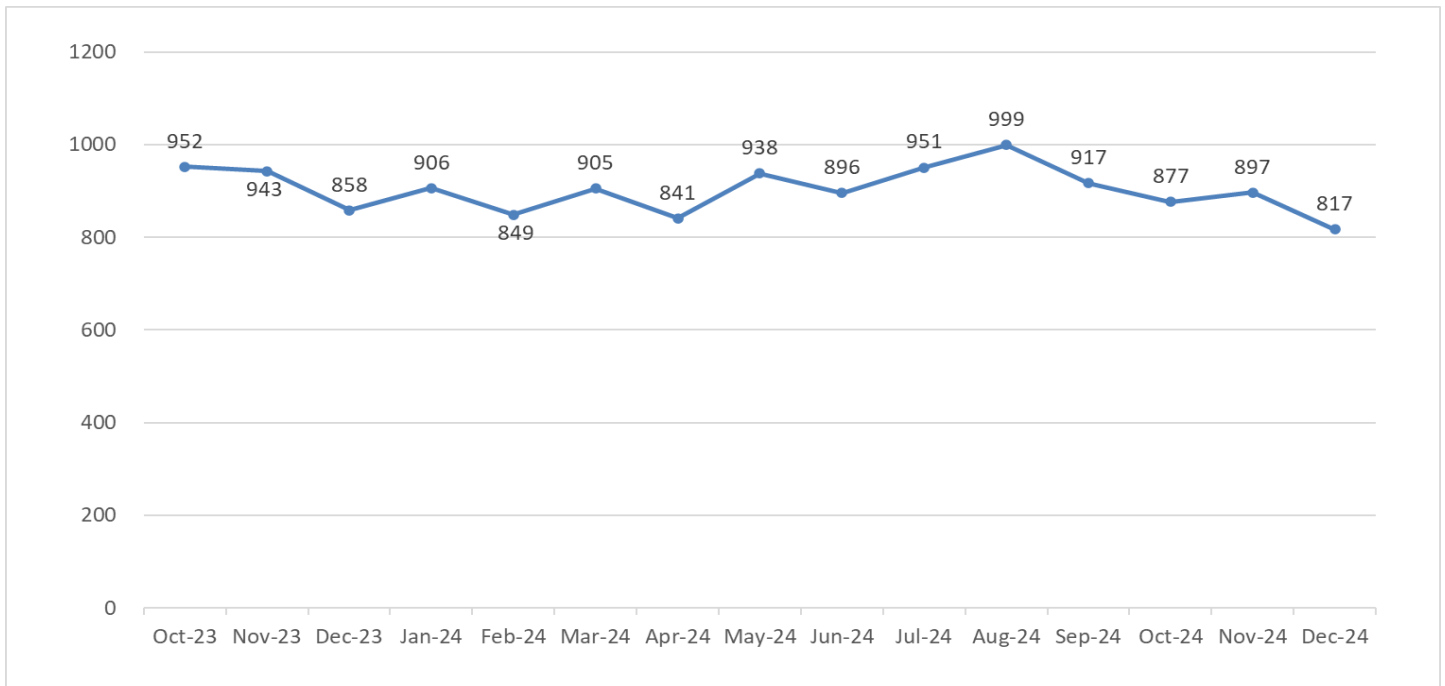


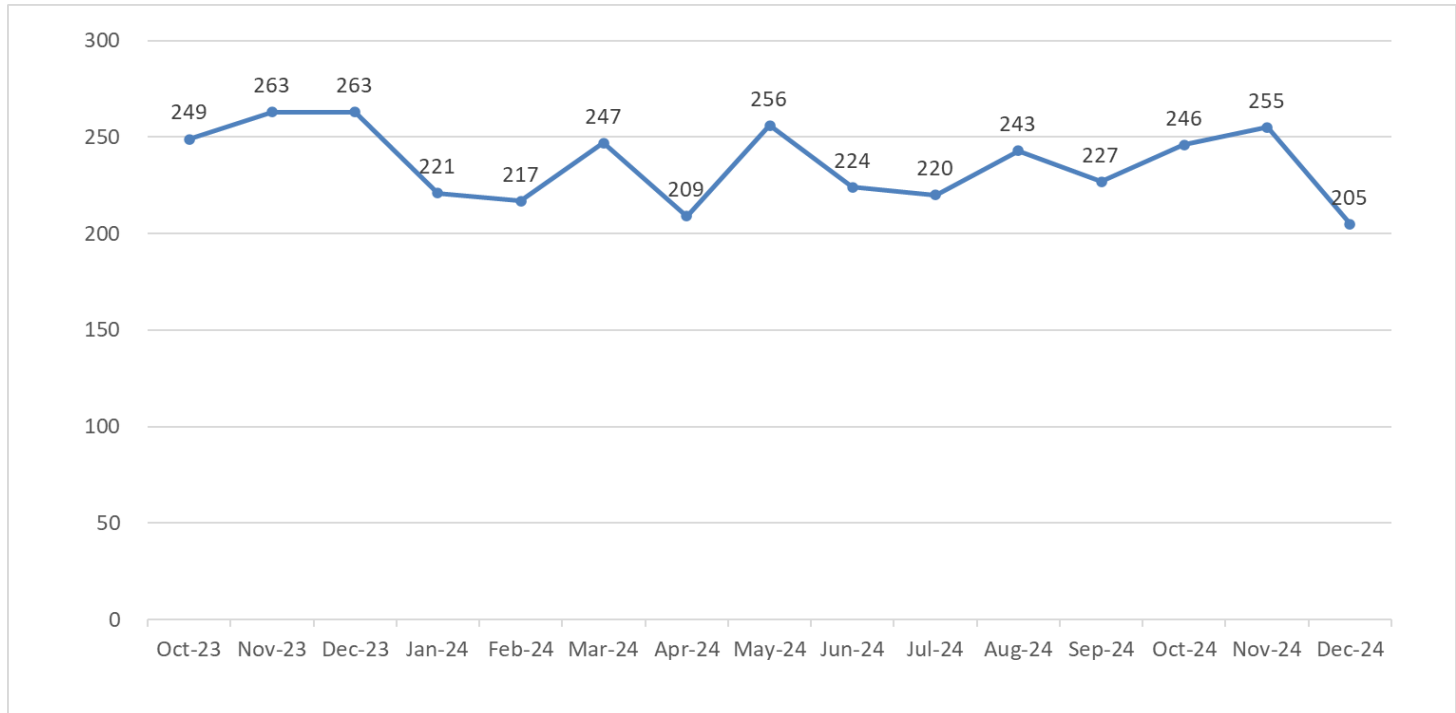
Table 13: Neonatal ICU Admissions and Patient Days– Current Compared to Previous Intervals

	CURRENT MONTH		LAST 3 MONTHS		LAST 12 MONTHS	
	Actual This Year	% Change From Last Year	Average This Year	% Change From Last Year	Average This Year	% Change From Last Year
NEONATAL ADMISSIONS						
Children's National Hospital	67	-23.86	70	-16.40	72	0.46
George Washington University Hospital	14	-51.72	24	-18.39	26	8.28
Howard University Hospital	3	-40.00	4	-7.69	4	4.08
MedStar Georgetown University Hospital	22	-4.35	21	-11.11	23	-7.87
MedStar Washington Hospital Center	99	-16.10	117	-0.85	105	-0.71
ACUTE TOTAL	205	-22.05	235	-8.90	231	-0.11
NEONATAL PATIENT DAYS						
Children's National Hospital	2,039	1.59	2,043	1.29	2,002	1.00
George Washington University Hospital	475	8.45	514	11.73	439	7.30
Howard University Hospital	21	-81.58	28	-60.83	48	-36.03
MedStar Georgetown University Hospital	837	30.17	734	58.99	624	46.10
MedStar Washington Hospital Center	824	-8.55	894	-2.65	818	-4.40
ACUTE TOTAL	4196	2.27	4214	7.23	3930	4.85

Table 14: Neonatal Admissions by Hospital Previous 15 Months

Neonatal Admissions - previous 15 months															
	Oct-23	Nov-23	Dec-23	Jan-24	Feb-24	Mar-24	Apr-24	May-24	Jun-24	Jul-24	Aug-24	Sep-24	Oct-24	Nov-24	Dec-24
Children's National Hospital	73	89	88	73	70	70	81	86	70	64	68	75	68	74	67
George Washington University Hospital	29	29	29	24	25	25	20	32	24	26	39	28	28	29	14
Howard University Hospital	2	6	5	3	6	3	6	5	2	2	8	4	7	2	3
MedStar Georgetown University Hospital	26	23	23	23	25	33	23	25	17	21	32	18	23	19	22
MedStar Washington Hospital Center	119	116	118	98	91	116	79	108	111	107	96	102	120	131	99
TOTAL	249	263	263	221	217	247	209	256	224	220	243	227	246	255	205
					lowest			highest							

Chart 6: Neonatal Admissions Aggregate Most Recent 15 Months



Emergency Department Visits

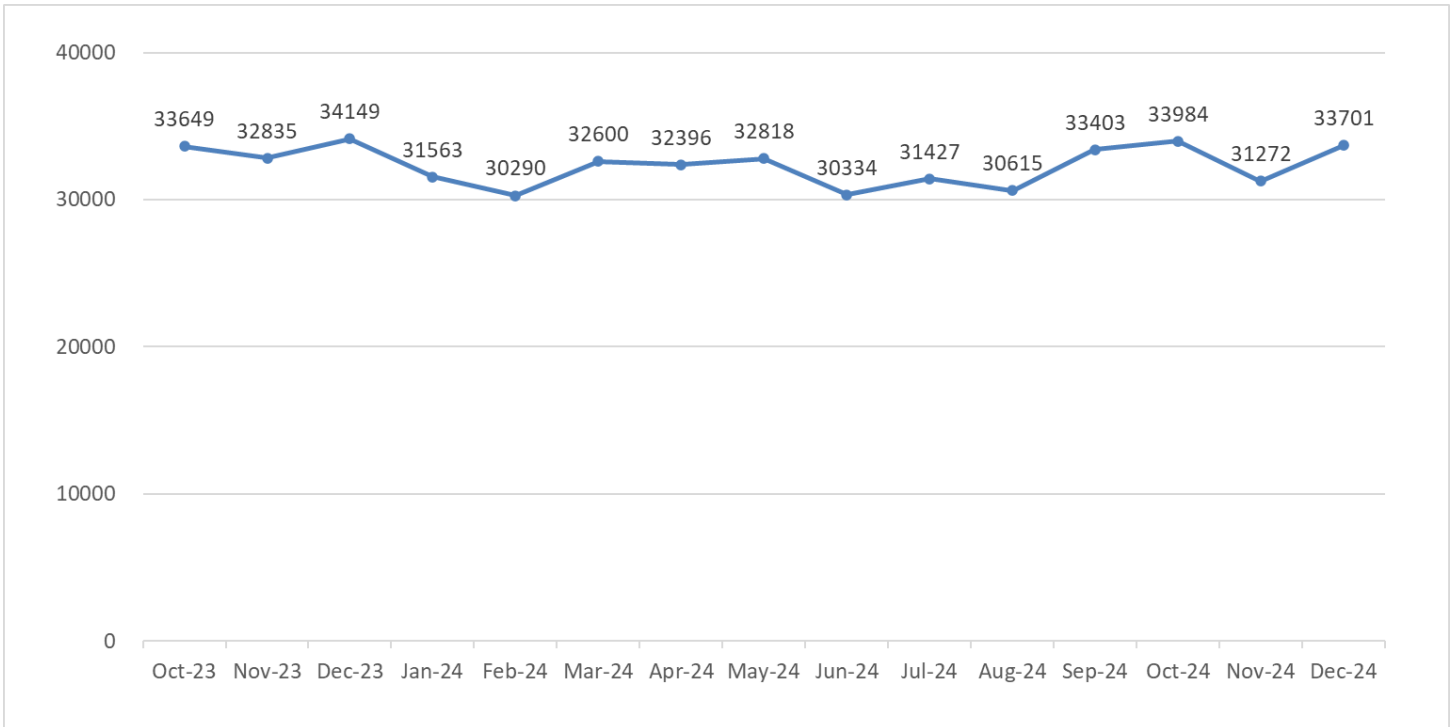
Table 15: Emergency Department Visits– Current Compared to Previous Intervals

	CURRENT MONTH		LAST 3 MONTHS		LAST 12 MONTHS	
	Actual This Year	% Change From Last Year	Average This Year	% Change From Last Year	Average This Year	% Change From Last Year
EMERGENCY DEPARTMENT VISITS						
Children's National Hospital	6,913	1.59	6,635	2.35	5,995	-1.75
Children's National Hospital at UMC	2,364	-4.18	2,237	-6.13	2,100	-2.63
George Washington University Hospital	4,406	-7.28	4,500	-5.79	4,283	-6.61
Howard University Hospital	3,944	-2.16	3,928	-4.28	3,964	-4.89
MedStar Georgetown University Hospital	3,283	9.69	3,235	16.30	3,133	17.51
MedStar Washington Hospital Center	6,481	-5.39	6,177	-9.42	6,337	-3.53
Sibley Memorial Hospital	3,437	5.82	3,422	4.66	3,319	4.36
United Medical Center	2,873	-4.33	2,852	-2.61	2,903	-0.88
ACUTE TOTAL	33701	-1.31	32986	-1.67	32034	-1.00

Table 16: Emergency Department Visits by Hospital Previous 15 Months

Emergency Department Admissions - previous 15 months															
	Oct-23	Nov-23	Dec-23	Jan-24	Feb-24	Mar-24	Apr-24	May-24	Jun-24	Jul-24	Aug-24	Sep-24	Oct-24	Nov-24	Dec-24
Children's National Hospital @ UMC	2324	2357	2467	2145	2193	2419	2356	2283	1606	1537	1491	2461	2262	2084	2364
Children's National Hospital	6060	6583	6805	6087	5809	6350	6405	6127	4823	5091	4582	6760	6611	6381	6913
George Washington University Hospital	4916	4662	4752	3797	3811	4173	4229	4052	4477	4445	4436	4470	4716	4379	4406
Howard University Hospital	4248	4032	4031	4164	3852	3981	3951	4026	3937	3951	4038	3888	4034	3806	3944
MedStar Georgetown University Hospital	2681	2670	2993	2876	2938	3155	3164	3244	3027	3195	3217	3072	3410	3011	3283
MedStar Washington Hospital Center	7172	6437	6850	6131	6001	6384	6291	6576	6483	6628	6660	6356	6296	5755	6481
Sibley Memorial Hospital	3383	3178	3248	3393	3036	3191	3189	3533	3045	3539	3250	3388	3655	3174	3437
United Medical Center	2865	2916	3003	2970	2650	2947	2811	2977	2936	3041	2941	3008	3000	2682	2873
TOTAL	33649	32835	34149	31563	30290	32600	32396	32818	30334	31427	30615	33403	33984	31272	33701
					lowest			highest							

Chart 7: Emergency Department Visits Aggregate – Most Recent 15 Months



Ambulatory Surgeries

Table 17: Ambulatory Surgeries by Hospital Current Compared with Previous Intervals

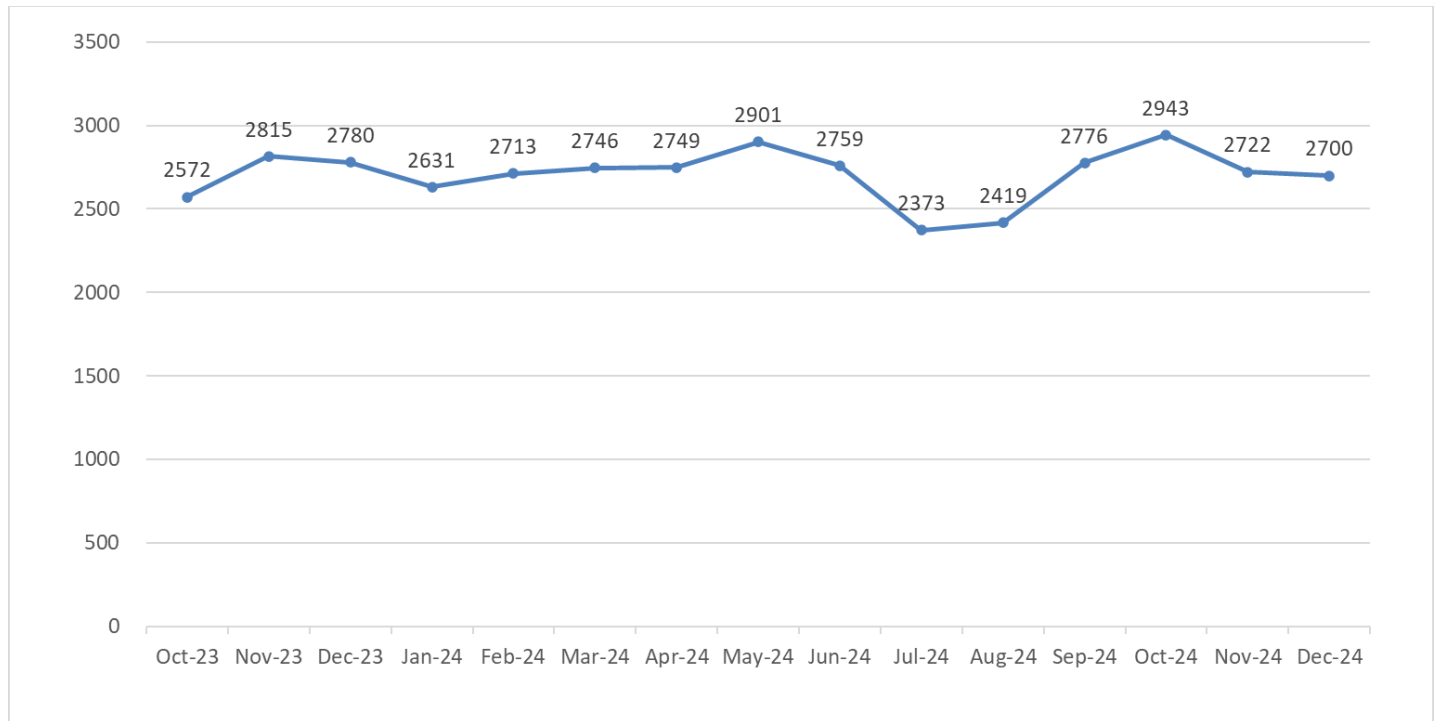
	CURRENT MONTH		LAST 3 MONTHS		LAST 12 MONTHS	
	Actual This Year	% Change From Last Year	Average This Year	% Change From Last Year	Average This Year	% Change From Last Year
AMBULATORY SURGERIES						
Children's National Hospital	1,181	-3.28	1,297	2.39	1,319	0.37
George Washington University Hospital	1,073	4.38	1,167	8.06	1,171	9.46
Howard University Hospital	463	-0.64	505	-6.83	524	-4.31
MedStar Georgetown University Hospital	834	65.15	830	21.10	809	11.65
MedStar Washington Hospital Center	871	14.30	912	7.08	898	3.16
Sibley Memorial Hospital	763	16.13	795	14.49	750	4.12
United Medical Center	47	-54.81	54	-48.41	96	-12.55
ACUTE TOTAL	5232	10.31	5561	6.42	5567	3.92

Observation Patients

Table 18: Observation Admissions by Hospital Current Compared with Previous Intervals

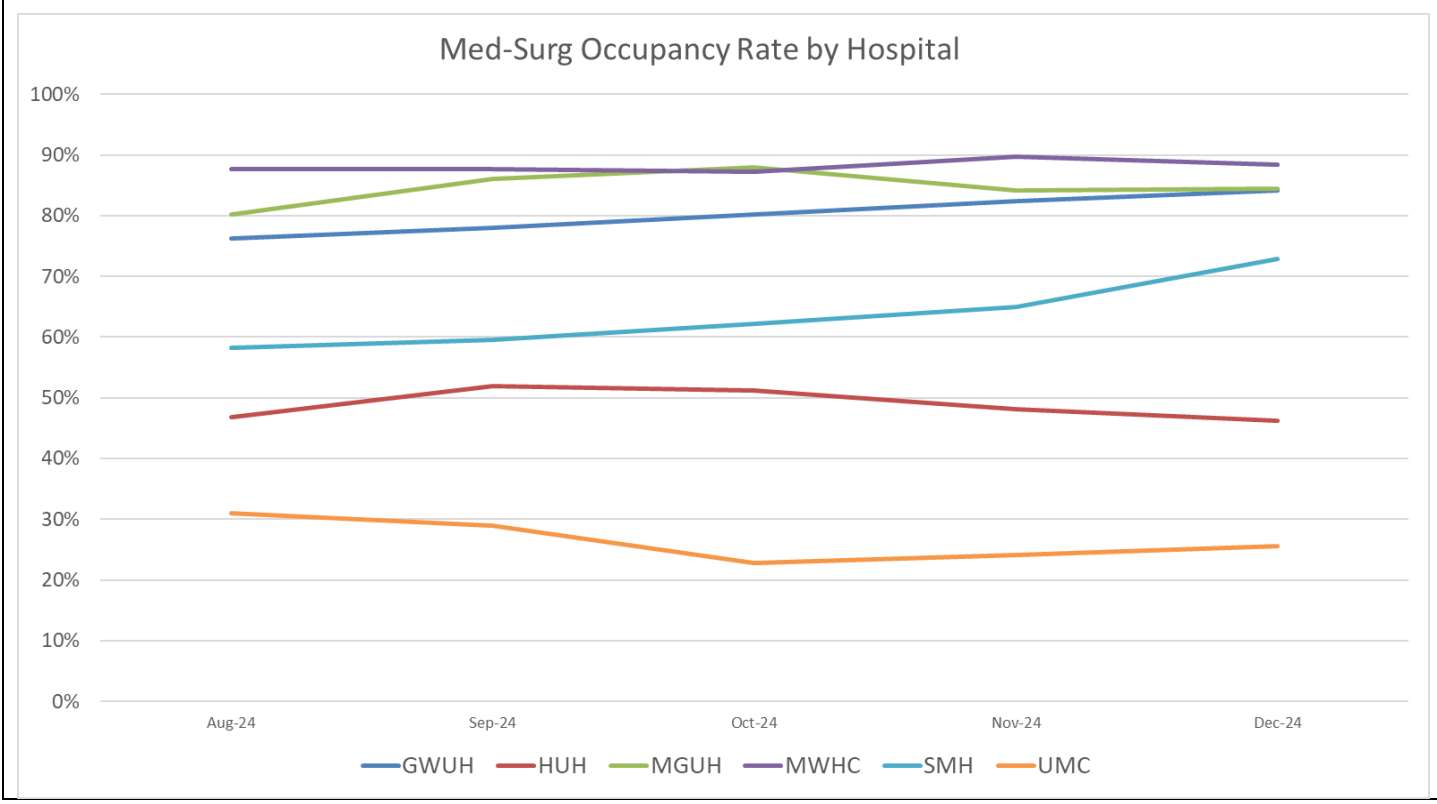
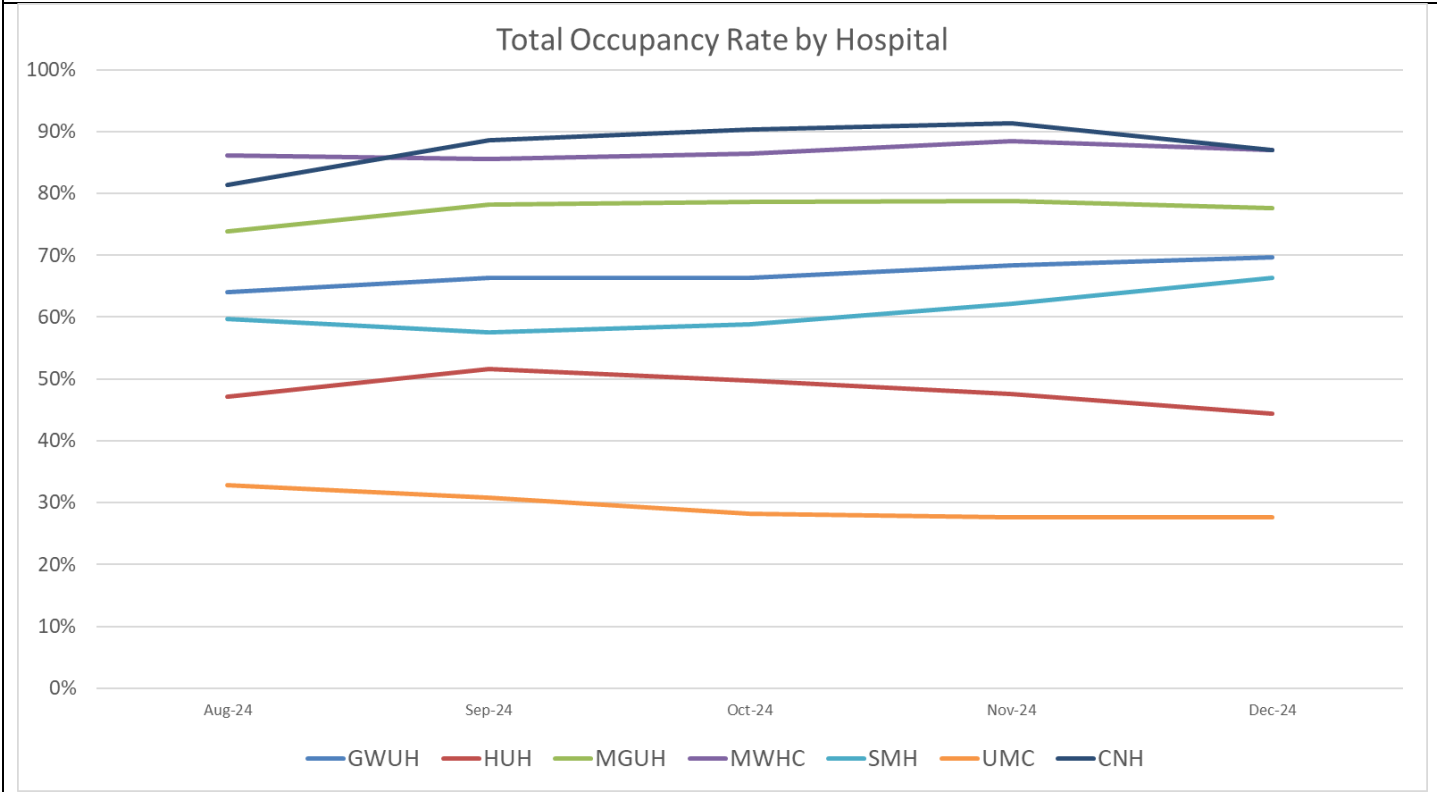
	CURRENT MONTH		LAST 3 MONTHS		LAST 12 MONTHS	
	Actual This Year	% Change From Last Year	Average This Year	% Change From Last Year	Average This Year	% Change From Last Year
OBSERVATIONS PATIENTS						
Acute						
Children's National Hospital	1,153	-3.84	1,197	7.00	1,097	-6.19
George Washington University Hospital	98	12.64	99	13.41	96	-12.47
Howard University Hospital	81	-33.61	91	-31.50	94	-40.54
MedStar Georgetown University Hospital	336	9.45	334	13.21	341	22.64
MedStar Washington Hospital Center	583	11.69	577	0.23	570	-1.64
Sibley Memorial Hospital	318	-7.29	345	4.76	331	-2.65
United Medical Center	131	-34.50	145	-20.77	174	2.50
ACUTE TOTAL	2700	-2.88	2788	2.42	2703	-3.62

Chart 8: Observation Patient Admissions Aggregate – Most Recent 15 Months



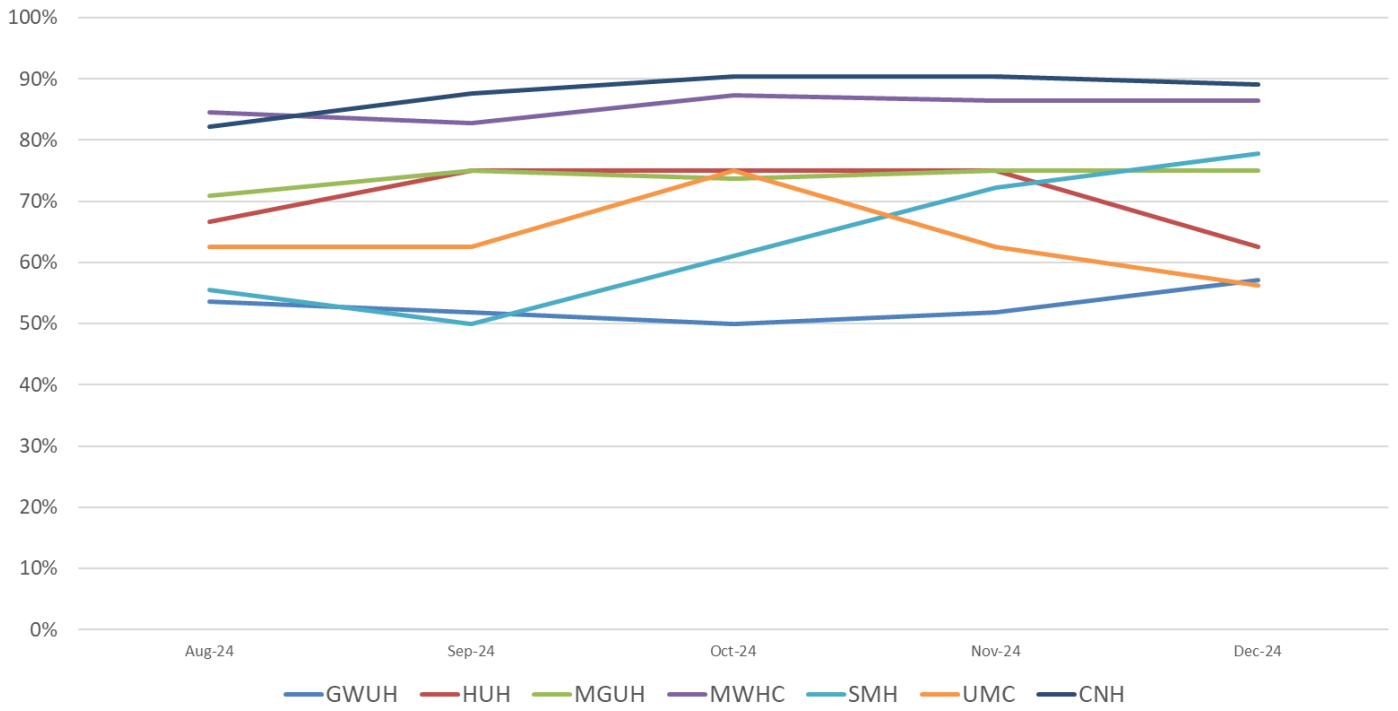
Average Daily Census By Hospital By Service

Occupancy Rates By Unit Type Acute Care Hospitals – 2024

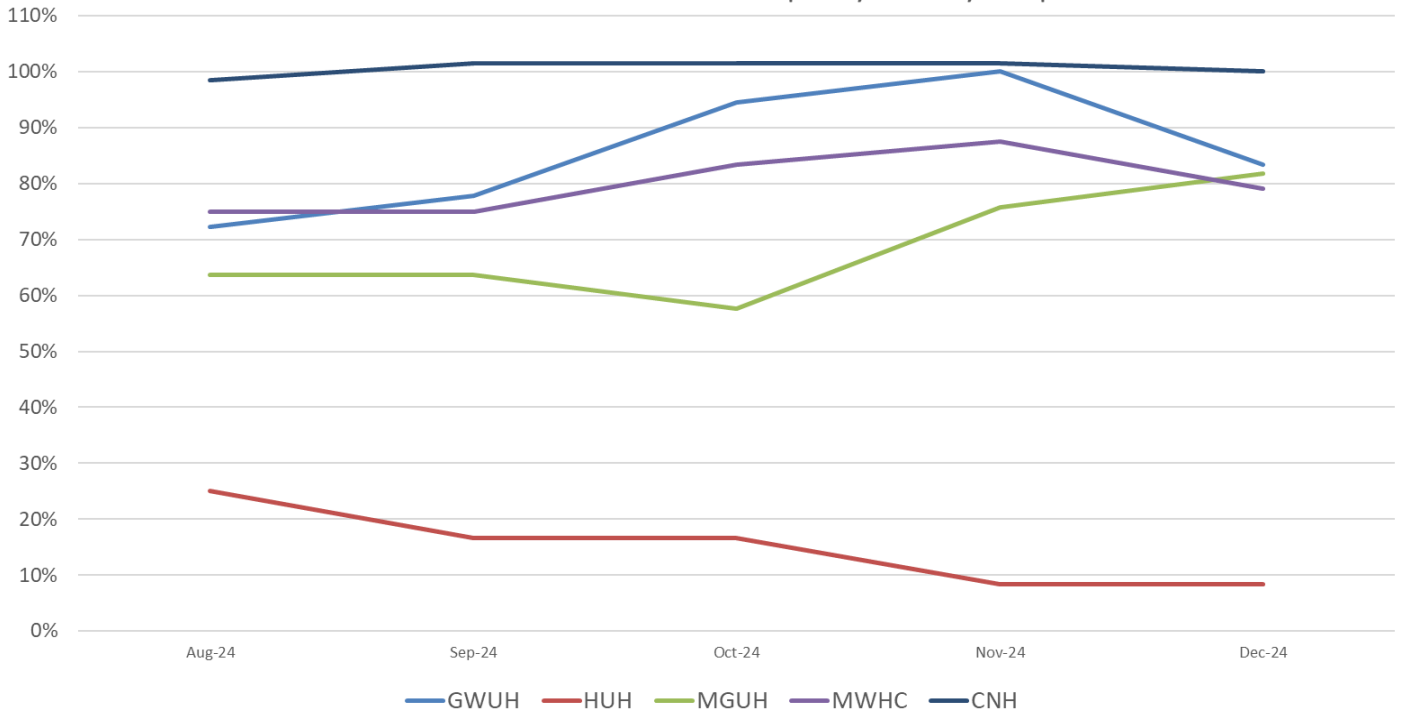


Occupancy Rates By Unit Type Acute Care Hospitals – 2024

ICU Occupancy Rate by Hospital

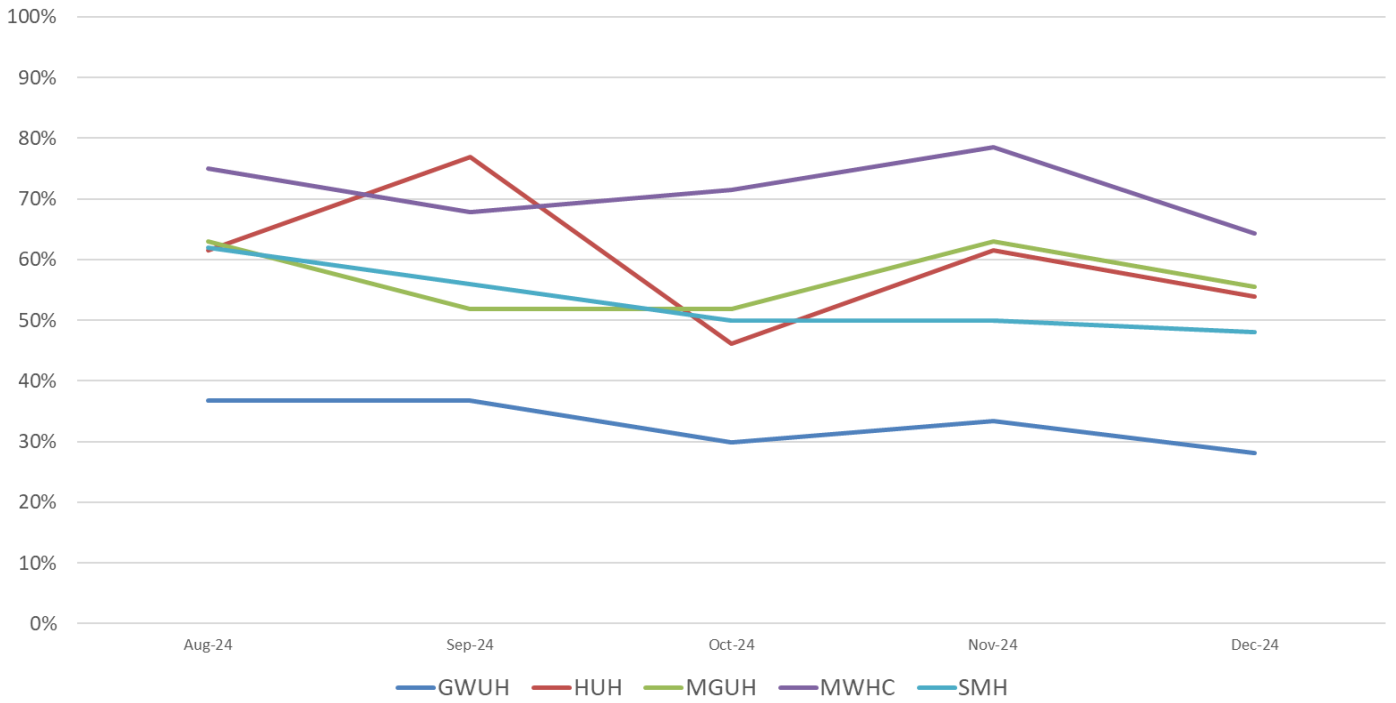


Neonatal Intensive Care Unit Occupancy Rate by Hospital

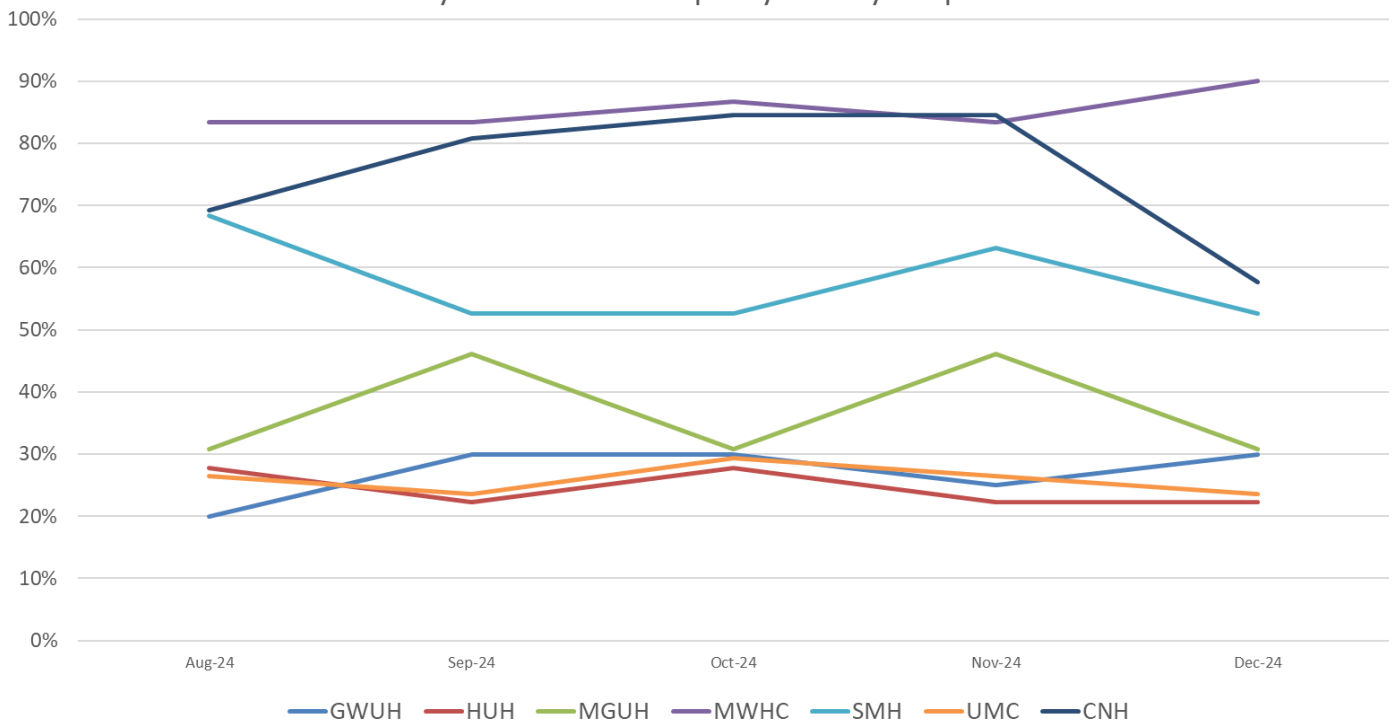


Occupancy Rates By Unit Type Acute Care Hospitals – 2024

OB-GYN Occupancy Rate by Hospital

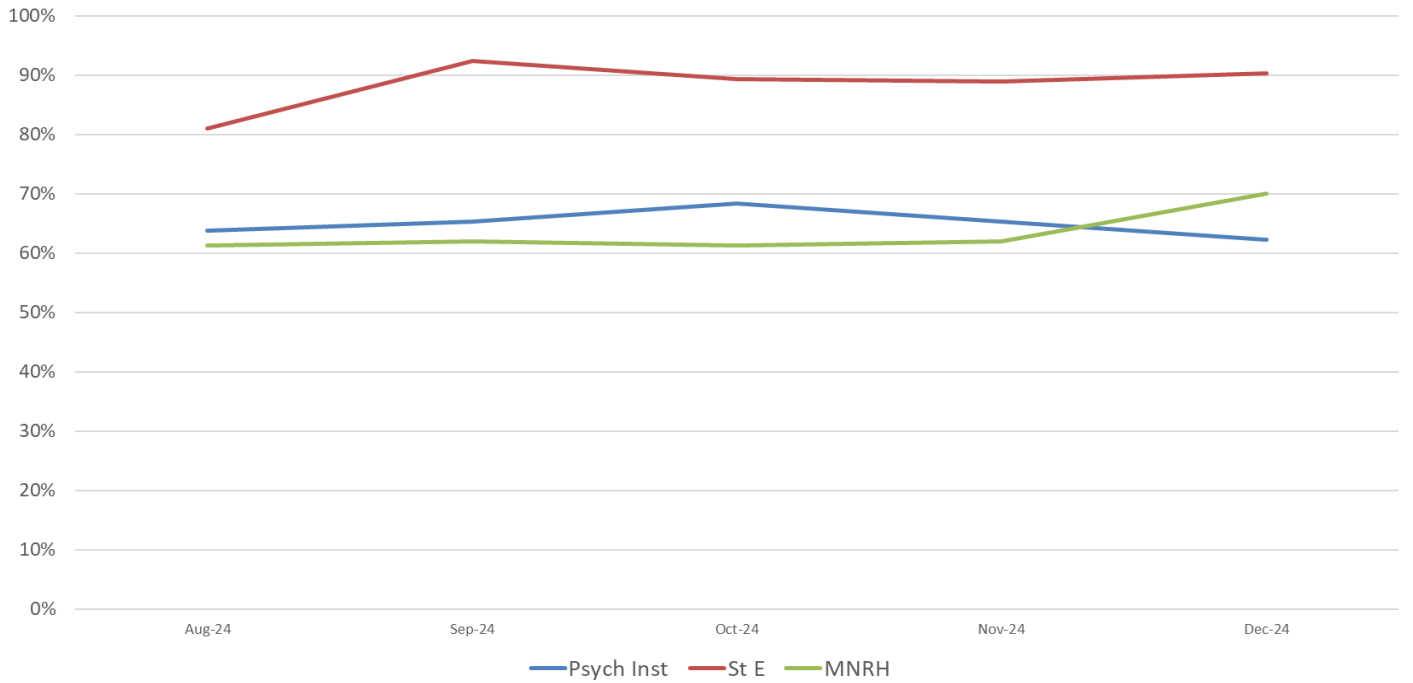


Psychiatric Unit Occupancy Rate by Hospital

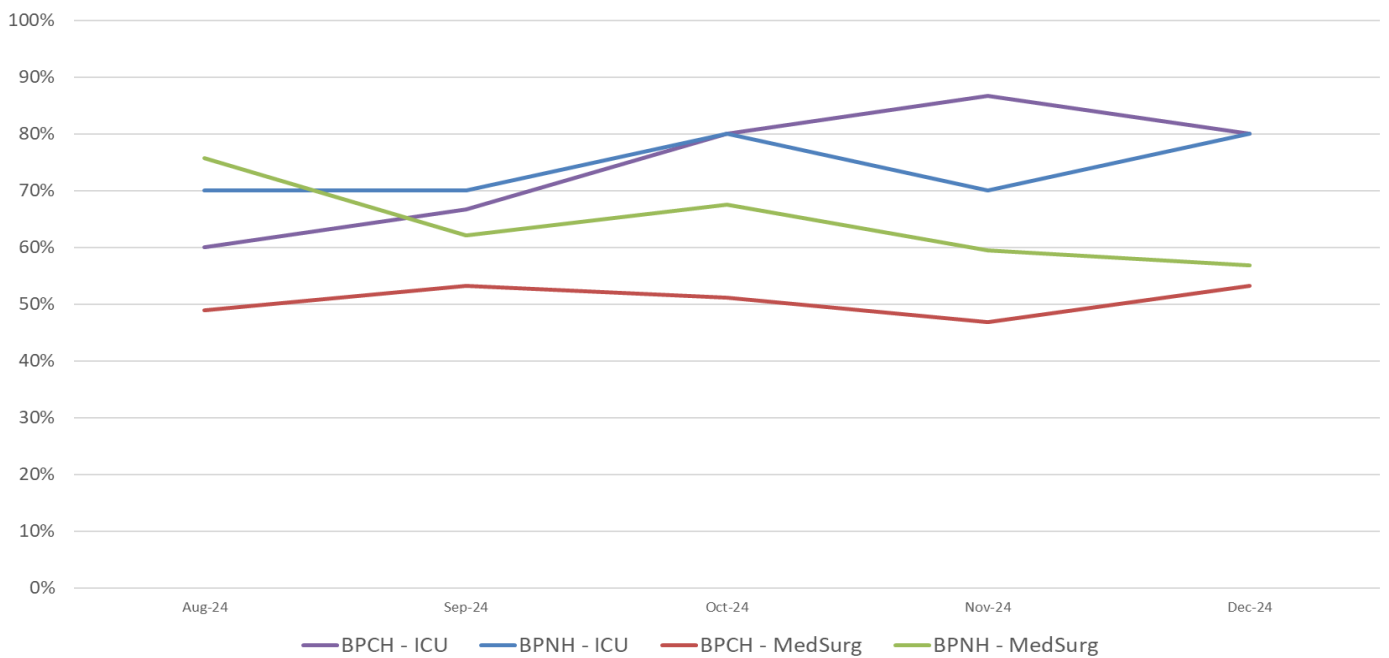


Occupancy Rates Specialty Hospitals - 2024

Specialty Facility Occupancy Rate by Hospital



Long Term Acute Care Facility Occupancy Rate by Hospital



Occupancy Rates Specialty Hospitals - 2024

Skilled Nursing Facility Occupancy Rate by Hospital

