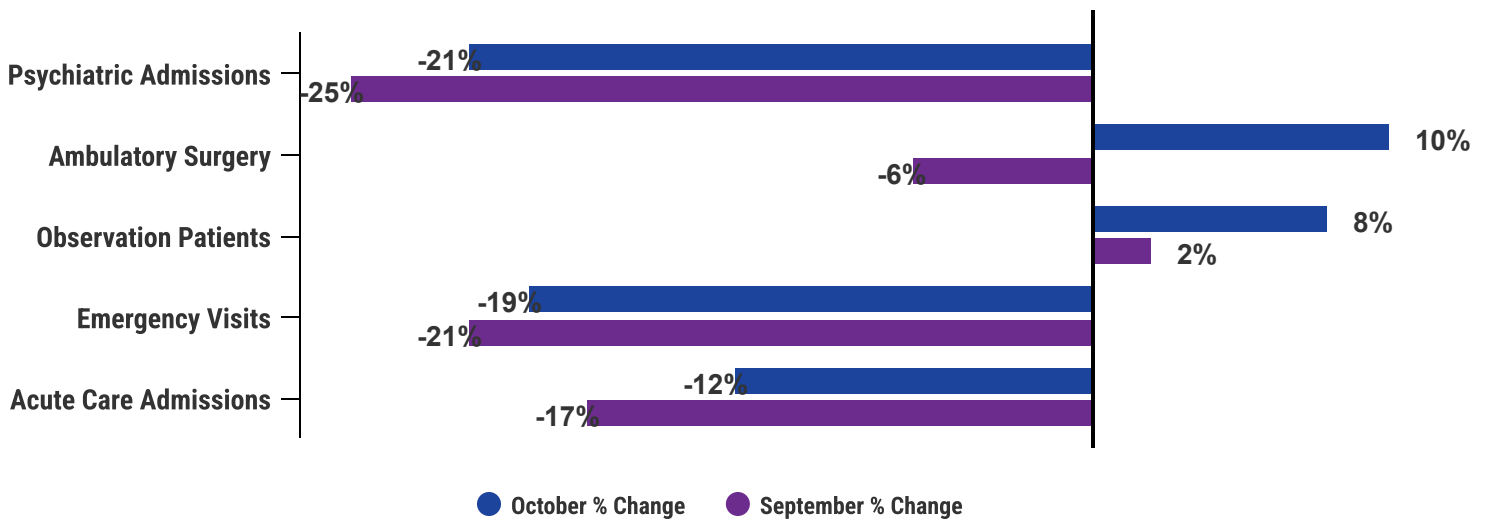


# Monthly Utilization Report October 2024

## Highlights

A generalized increase in volumes across all five focus utilization metrics from September to October 2024 compared to 2020 pre-COVID baselines. Ambulatory surgery volumes present the biggest increase going from -6% below baselines in September to 10% above baseline in October. Observation admission volumes remain above baseline from September to October, going from 2% to 8%. Acute care admissions increased from -17% below baseline in September to -12% in October, and psychiatric admissions also increased going from -25% below baselines in September to -21% in October. Lastly, emergency department visits saw the smallest increase in volumes going from -21% below baseline in September to -19% in October (see Fig. 1 below).

Fig 1: Acute Care Hospitals, Percentage Change September - October 2024 to January 2020

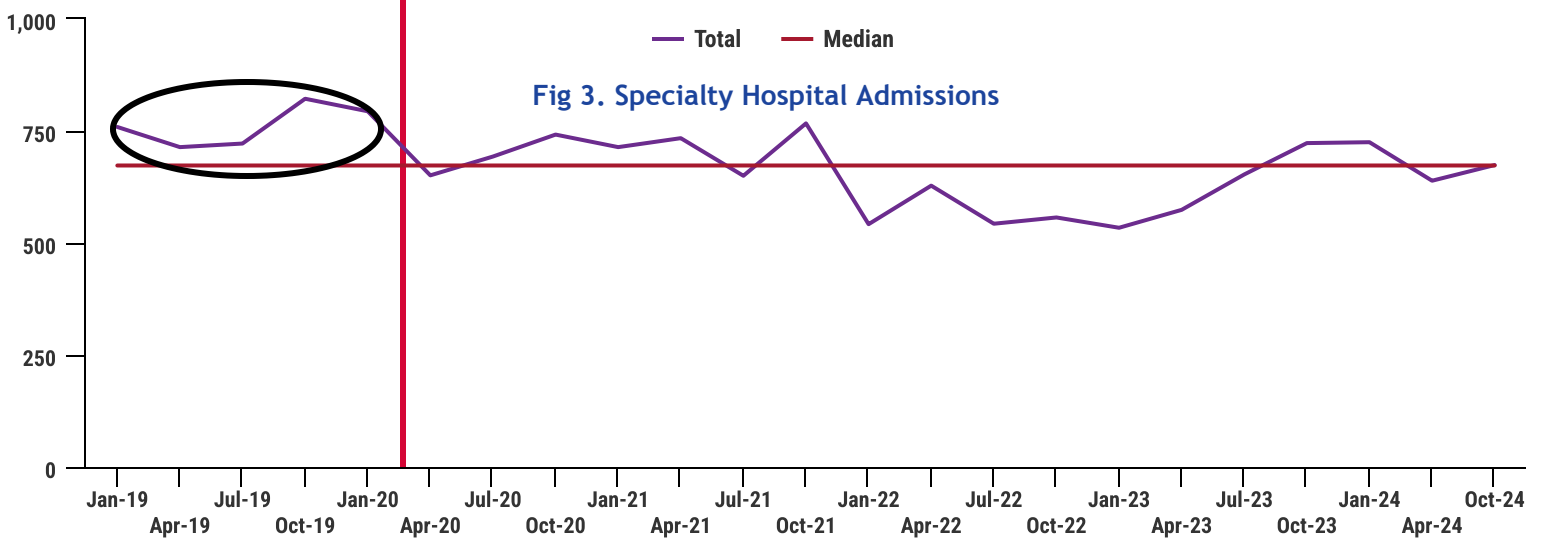
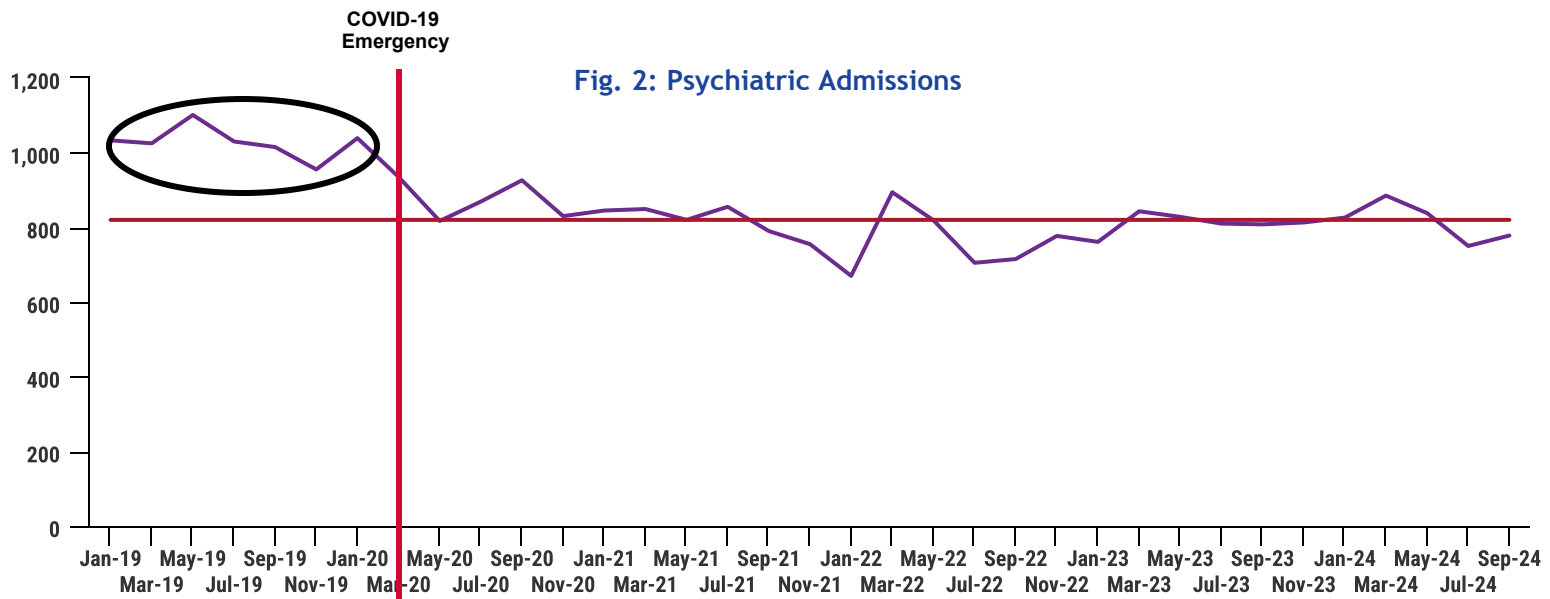


See Next Page for More Data

# Monthly Utilization Report October 2024

## Highlights

Although there is an uptick of psychiatric admissions volumes this month the metric continues to remain below the median as shown in Fig. 2 below. This month specialty admissions are back up slightly above the median after the data shift noticed over the last six months as depicted in Fig. 3 below.



— Total — Median

# Table of Contents

<b>Admissions</b> .....	3
Table 1: Acute Care Hospitals – Current Admissions Compared to Previous Intervals.....	3
Table 2: Acute Care Hospitals – Admissions Previous 15 Months.....	3
Chart 1: Acute Care Hospitals – Aggregate Admissions Most Recent 15 Months.....	3
Table 3: Specialty Care Hospitals – Current Admissions Compared to Previous Intervals.....	4
Table 4: Specialty Care Hospitals – Admissions Previous 15 Months by Hospital.....	4
Chart 2: Specialty Care Hospitals – Aggregate Admissions Most Recent 15 Months.....	4
<b>Patient Days</b> .....	5
Table 5: Patient Days for Acute Care and Specialty Care Hospitals-Current Compared to Previous Intervals.....	5
<b>Psychiatric Admissions and Patient Days</b> .....	6
Table 6: Psychiatric Admissions and Patient Days Current Compared to Previous Intervals.....	6
Table 7: Psychiatric Admissions Previous 15 Months by Hospital.....	7
Chart 3: Acute Care Hospitals and Psychiatric Institutions - Psychiatric Admissions Aggregate Most Recent 15 Months....	7
Table 8: Civil Commitment Admissions – Admissions Previous 15 Months by Hospital.....	8
Chart 4: Civil Commitment Admissions – Aggregate Admissions Most Recent 15 Months.....	8
<b>Rehabilitation Admissions and Patient Days</b> .....	9
Table 9: Rehabilitation Admissions and Patient Days Current Compared with Previous Intervals .....	9
<b>Skilled Nursing Facility Admissions and Patient Days</b> .....	9
Table 10: SNF Admissions and Patient Days Current Compared with Previous Intervals .....	9
<b>Newborn and Neonatal ICU Data: Admissions and Patient Days</b> .....	10
Table 11: Newborn Admissions and Patient Days – Current Compared to Previous Intervals.....	10
Table 12: Newborn Admissions by Hospital Previous 15 Months.....	10
Chart 5: Newborn Admissions – Most Recent 15 Months.....	10
Table 13: Neonatal ICU Admissions and Patient Days – Current Compared to Previous Intervals.....	11
Table 14: Neonatal Admissions by Hospital Previous 15 Months.....	11
Chart 6: Neonatal Admissions Aggregate Most Recent 15 Months.....	11
<b>Emergency Department Visits</b> .....	12
Table 15: Emergency Department Visits – Current Compared to Previous Intervals.....	12
Table 16: Emergency Department Visits by Hospital Previous 15 Months.....	12
Chart 7: Emergency Department Visits Aggregate – Most Recent 15 Months.....	12
<b>Ambulatory Surgeries</b> .....	13
Table 17: Ambulatory Surgeries by Hospital Current Compared with Previous Intervals .....	13
<b>Observation Patients</b> .....	14
Table 18: Observation Admissions by Hospital Current Compared with Previous Intervals .....	14
Chart 8: Observation Patient Admissions Aggregate – Most Recent 15 Months.....	14
<b>Average Daily Census by Hospital by Service</b> .....	15

## Admissions

Note: In this section, “Admissions” excludes newborns and SNF patients

Table 1: Acute Care Hospitals - Current Admissions Compared to Previous Intervals

	CURRENT MONTH		LAST 3 MONTHS		LAST 12 MONTHS	
	Actual This Year	% Change From Last Year	Average This Year	% Change From Last Year	Average This Year	% Change From Last Year
<b>ADMISSIONS</b>						
Acute						
Children's National Hospital	1,234	-4.12	1,176	2.23	1,170	0.97
George Washington University Hospital	1,340	-12.70	1,324	-9.54	1,354	-1.32
Howard University Hospital	533	-15.93	568	-8.19	580	-4.86
MedStar Georgetown University Hospital	1,358	8.12	1,285	7.98	1,272	8.52
MedStar Washington Hospital Center	2,576	0.16	2,499	0.03	2,482	1.60
Sibley Memorial Hospital	1,085	5.34	1,053	5.87	1,024	7.72
United Medical Center	223	-3.04	231	-12.52	263	-9.57
<b>ACUTE TOTAL</b>	<b>8349</b>	<b>-2.28</b>	<b>8137</b>	<b>-0.53</b>	<b>8144</b>	<b>1.85</b>

Table 2: Acute Care Hospitals – Admissions Previous 15 Months

Acute Care Hospital Admissions - previous 15 months															
	Aug-23	Sep-23	Oct-23	Nov-23	Dec-23	Jan-24	Feb-24	Mar-24	Apr-24	May-24	Jun-24	Jul-24	Aug-24	Sep-24	Oct-24
Children's National Hospital	1042	1123	1287	1272	1235	1181	1123	1208	1217	1221	1032	1020	1070	1225	1234
George Washington University Hospital	1464	1393	1535	1359	1379	1359	1340	1416	1378	1437	1290	1319	1316	1317	1340
Howard University Hospital	606	617	634	565	626	600	565	598	578	607	536	575	610	562	533
MedStar Georgetown University Hospital	1150	1164	1256	1219	1170	1247	1279	1292	1347	1310	1218	1327	1267	1230	1358
MedStar Washington Hospital Center	2558	2366	2572	2478	2497	2525	2377	2447	2435	2541	2500	2483	2575	2347	2576
Sibley Memorial Hospital	1018	935	1030	1000	951	1011	1039	1032	1039	1073	965	1018	1089	984	1085
United Medical Center	282	279	230	318	282	278	264	276	254	302	234	257	235	234	223
<b>TOTAL</b>	<b>8120</b>	<b>7877</b>	<b>8544</b>	<b>8211</b>	<b>8140</b>	<b>8201</b>	<b>7987</b>	<b>8269</b>	<b>8248</b>	<b>8491</b>	<b>7775</b>	<b>7999</b>	<b>8162</b>	<b>7899</b>	<b>8349</b>
					lowest			highest							

Chart 1: Acute Care Hospitals – Aggregate Admissions Most Recent 15 Months

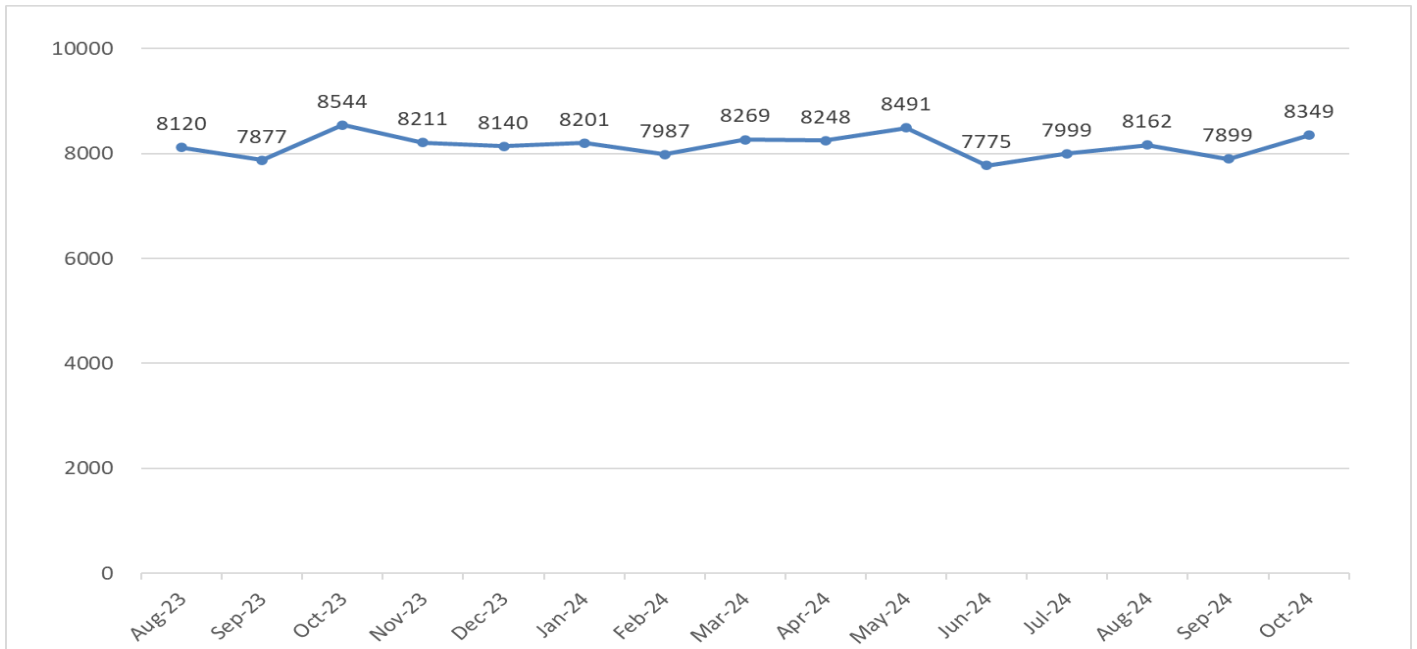


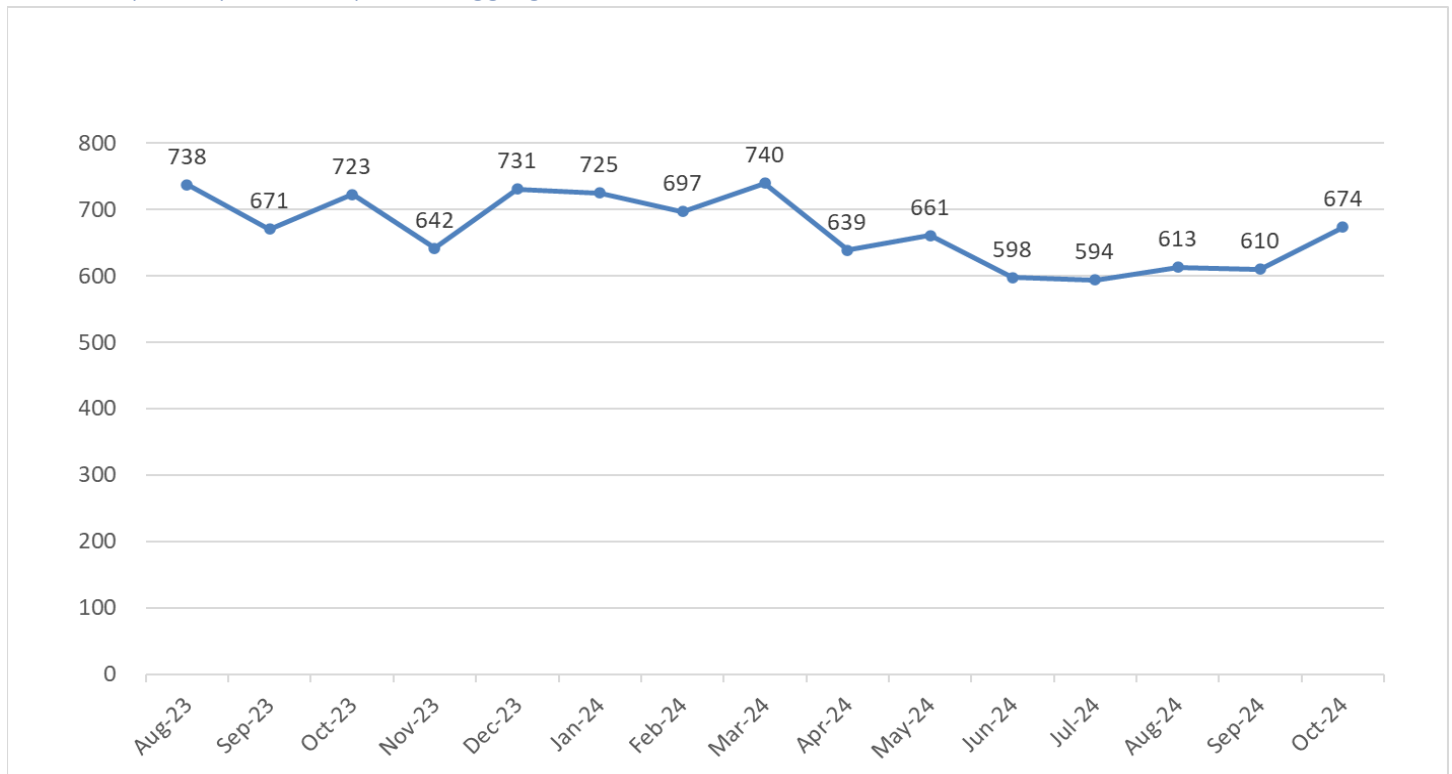
Table 3: Specialty Care Hospitals – Current Admissions Compared to Previous Intervals

	CURRENT MONTH		LAST 3 MONTHS		LAST 12 MONTHS	
	Actual This Year	% Change From Last Year	Average This Year	% Change From Last Year	Average This Year	% Change From Last Year
<b>ADMISSIONS</b>						
Acute						
BridgePoint Hospital -Capitol Hill	41	-2.38	41	4.24	42	-4.52
BridgePoint Hospital -National Harborside	38	0.00	31	-15.32	36	2.34
MedStar National Rehabilitation Hospital	156	-11.86	150	-12.82	159	-0.94
Psychiatric Institute of Washington	403	-8.41	378	-12.90	391	10.18
Saint Elizabeths Hospital	36	38.46	32	12.79	32	26.80
<b>ACUTE TOTAL</b>	<b>674</b>	<b>-6.78</b>	<b>632</b>	<b>-11.02</b>	<b>660</b>	<b>6.49</b>

Table 4: Specialty Care Hospitals – Admissions Previous 15 Months by Hospital

Specialty Hospital Admissions - previous 15 months															
	Aug-23	Sep-23	Oct-23	Nov-23	Dec-23	Jan-24	Feb-24	Mar-24	Apr-24	May-24	Jun-24	Jul-24	Aug-24	Sep-24	Oct-24
MedStar National Rehabilitation Hospital	174	164	177	154	181	174	178	165	147	153	154	151	148	145	156
Psychiatric Institute of Washington	458	404	440	386	434	440	406	442	370	381	348	345	367	364	403
Saint Elizabeths Hospital	32	28	26	35	32	12	40	41	36	36	29	30	32	29	36
BridgePoint Hospital -Capitol Hill	37	39	42	38	40	54	39	50	47	48	37	31	36	46	41
BridgePoint Hospital -National Harborside	37	36	38	29	44	45	34	42	39	43	30	37	30	26	38
<b>TOTAL</b>	<b>738</b>	<b>671</b>	<b>723</b>	<b>642</b>	<b>731</b>	<b>725</b>	<b>697</b>	<b>740</b>	<b>639</b>	<b>661</b>	<b>598</b>	<b>594</b>	<b>613</b>	<b>610</b>	<b>674</b>
					lowest			highest							

Chart 2: Specialty Care Hospitals – Aggregate Admissions Most Recent 15 Months



## Patient Days

Note: In this section, "Patient Days" excludes newborns and SNF patients

Table 5: Patient Days for Acute Care and Specialty Care Hospitals – Current Compared with Previous Intervals

	CURRENT MONTH		LAST 3 MONTHS		LAST 12 MONTHS	
	Actual This Year	% Change From Last Year	Average This Year	% Change From Last Year	Average This Year	% Change From Last Year
<b>PATIENT DAYS</b>						
Acute						
Children's National Hospital	7,257	3.72	6,827	2.39	6,613	-0.54
George Washington University Hospital	8,137	-5.93	8,026	-2.14	8,265	0.72
Howard University Hospital	3,393	0.41	3,350	3.13	3,357	-5.15
MedStar Georgetown University Hospital	11,351	14.60	10,888	17.51	10,471	9.29
MedStar Washington Hospital Center	20,234	5.62	19,928	4.68	19,638	0.79
Sibley Memorial Hospital	4,341	-6.89	4,284	-4.27	4,320	0.88
United Medical Center	1,389	-8.86	1,561	-3.36	1,699	3.89
<b>ACUTE TOTAL</b>	<b>56102</b>	<b>3.37</b>	<b>54864</b>	<b>4.48</b>	<b>54362</b>	<b>1.85</b>
Specialty						
BridgePoint Hospital -Capitol Hill	1,125	7.35	1,052	-4.25	1,110	-7.78
BridgePoint Hospital -National Harborside	1,020	-11.69	1,008	-3.08	1,062	0.73
MedStar National Rehabilitation Hospital	2,615	-7.63	2,588	-5.89	2,728	-2.67
Psychiatric Institute of Washington	2,745	-26.15	2,618	-29.91	3,163	1.70
Saint Elizabeths Hospital	8,106	8.05	8,111	10.25	8,015	16.81
<b>SPECIALTY TOTAL</b>	<b>15611</b>	<b>-3.95</b>	<b>15377</b>	<b>-3.78</b>	<b>16077</b>	<b>6.95</b>
<b>GRAND TOTAL</b>	<b>71713</b>	<b>1.68</b>	<b>70241</b>	<b>2.56</b>	<b>70439</b>	<b>2.97</b>

## Psychiatric Admissions and Patient Days

Table 6: Psychiatric Admissions and Patient Days Current Compared to Previous Intervals

	CURRENT MONTH		LAST 3 MONTHS		LAST 12 MONTHS	
	Actual This Year	% Change From Last Year	Average This Year	% Change From Last Year	Average This Year	% Change From Last Year
<b>PSYCH ADMISSIONS</b>						
Acute						
Children's National Hospital	69	-5.48	63	8.05	59	9.22
George Washington University Hospital	42	-28.81	42	-17.11	43	-5.97
Howard University Hospital	29	-3.33	28	-2.30	30	-4.84
MedStar Georgetown University Hospital	30	15.38	33	14.94	30	-4.32
MedStar Washington Hospital Center	91	-18.02	104	-1.26	103	-6.91
Sibley Memorial Hospital	52	4.00	53	24.22	49	8.13
United Medical Center	65	-2.99	63	-20.68	70	-24.98
<b>ACUTE TOTAL</b>	<b>378</b>	<b>-9.13</b>	<b>386</b>	<b>-1.95</b>	<b>384</b>	<b>-6.78</b>
Specialty						
Psychiatric Institute of Washington	403	-8.41	378	-12.90	391	10.18
Saint Elizabeths Hospital	36	38.46	32	12.79	32	26.80
<b>SPECIALTY TOTAL</b>	<b>439</b>	<b>-5.79</b>	<b>410</b>	<b>-11.31</b>	<b>423</b>	<b>11.30</b>
<b>GRAND TOTAL</b>	<b>817</b>	<b>-7.37</b>	<b>797</b>	<b>-7.00</b>	<b>807</b>	<b>1.90</b>
<b>PSYCH PATIENT DAYS</b>						
Acute						
Children's National Hospital	678	2.57	624	2.35	597	-4.20
George Washington University Hospital	182	-25.71	163	-28.47	187	-19.81
Howard University Hospital	145	-10.49	140	-11.58	144	-9.34
MedStar Georgetown University Hospital	124	-20.51	146	-3.52	136	-2.28
MedStar Washington Hospital Center	797	-2.21	772	-3.34	788	1.10
Sibley Memorial Hospital	313	-17.85	341	-6.23	345	-8.13
United Medical Center	292	3.55	271	-17.14	295	-28.27
<b>ACUTE TOTAL</b>	<b>2531</b>	<b>-6.33</b>	<b>2457</b>	<b>-6.81</b>	<b>2491</b>	<b>-8.40</b>
Specialty						
Psychiatric Institute of Washington, D.C.	2,745	-26.15	2,618	-29.91	3,163	1.70
Saint Elizabeths Hospital	8,106	8.05	8,111	10.25	8,015	16.81
<b>SPECIALTY TOTAL</b>	<b>10851</b>	<b>-3.28</b>	<b>10729</b>	<b>-3.28</b>	<b>11178</b>	<b>12.10</b>
<b>GRAND TOTAL</b>	<b>13382</b>	<b>-3.87</b>	<b>13186</b>	<b>-3.96</b>	<b>13669</b>	<b>7.70</b>

Table 7: Psychiatric Admissions Previous 15 Months by Hospital

Psychiatric Admissions - previous 15 months															
	Aug-23	Sep-23	Oct-23	Nov-23	Dec-23	Jan-24	Feb-24	Mar-24	Apr-24	May-24	Jun-24	Jul-24	Aug-24	Sep-24	Oct-24
Children's National Hospital	48	53	73	47	62	62	58	60	62	66	55	51	59	60	69
George Washington University Hospital	48	45	59	41	44	42	44	45	59	48	35	36	35	49	42
Howard University Hospital	27	30	30	24	26	26	25	32	40	38	29	29	31	25	29
MedStar Georgetown University Hospital	26	35	26	23	31	31	23	32	31	37	19	27	31	39	30
MedStar Washington Hospital Center	113	93	111	108	112	110	79	109	104	96	95	113	115	107	91
Sibley Memorial Hospital	37	41	50	46	44	40	55	48	50	52	40	51	62	45	52
United Medical Center	91	79	67	103	78	63	65	76	64	84	62	58	63	60	65
Psychiatric Institute of Washington	458	404	440	386	434	440	406	442	370	381	348	345	367	364	403
Saint Elizabeths Hospital	32	28	26	35	32	12	40	41	36	36	29	30	32	29	36
<b>TOTAL</b>	<b>880</b>	<b>808</b>	<b>882</b>	<b>813</b>	<b>863</b>	<b>826</b>	<b>795</b>	<b>885</b>	<b>816</b>	<b>838</b>	<b>712</b>	<b>740</b>	<b>795</b>	<b>778</b>	<b>817</b>
					lowest			highest							

Chart 3: Acute Care Hospitals and Psychiatric Institutions– Psychiatric Admissions Aggregate Most Recent 15 Months

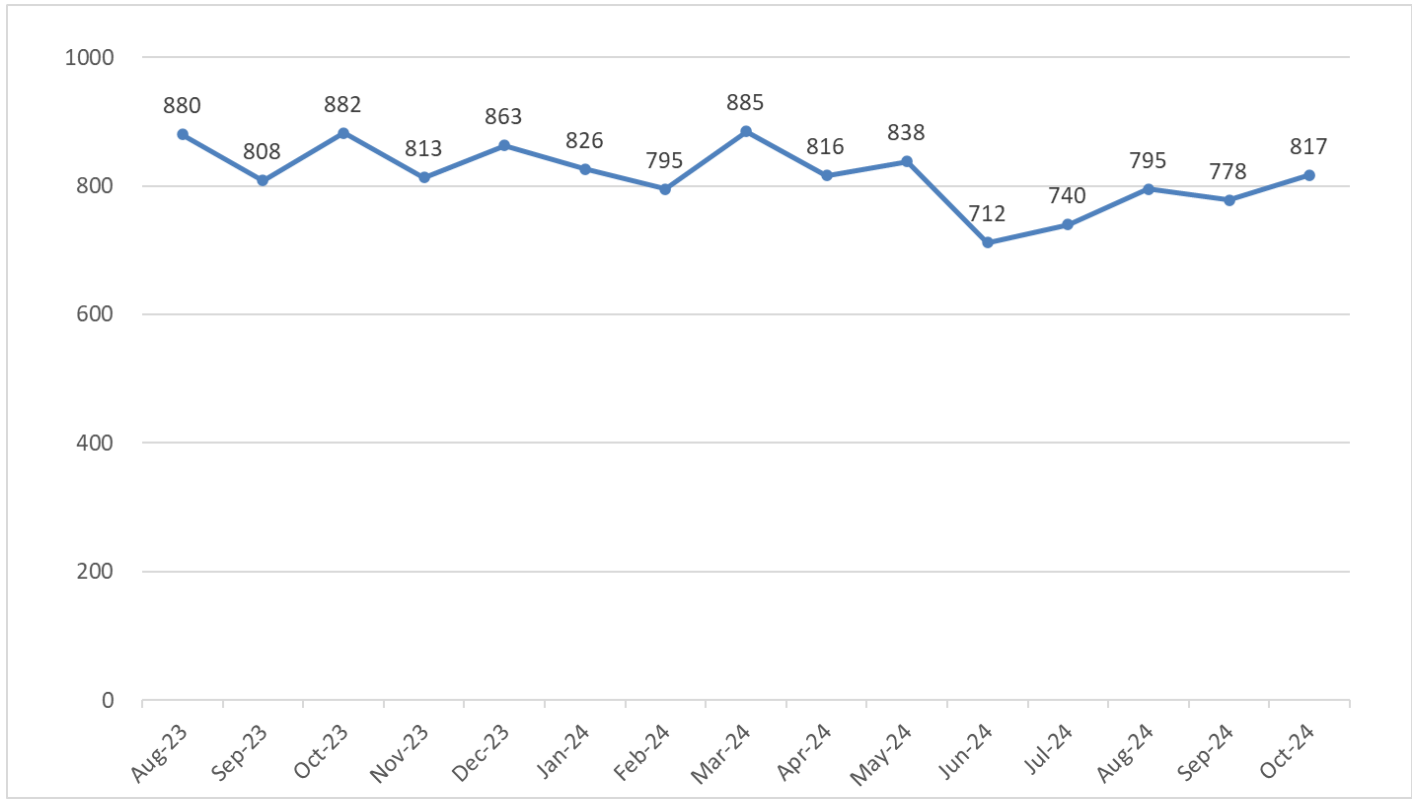
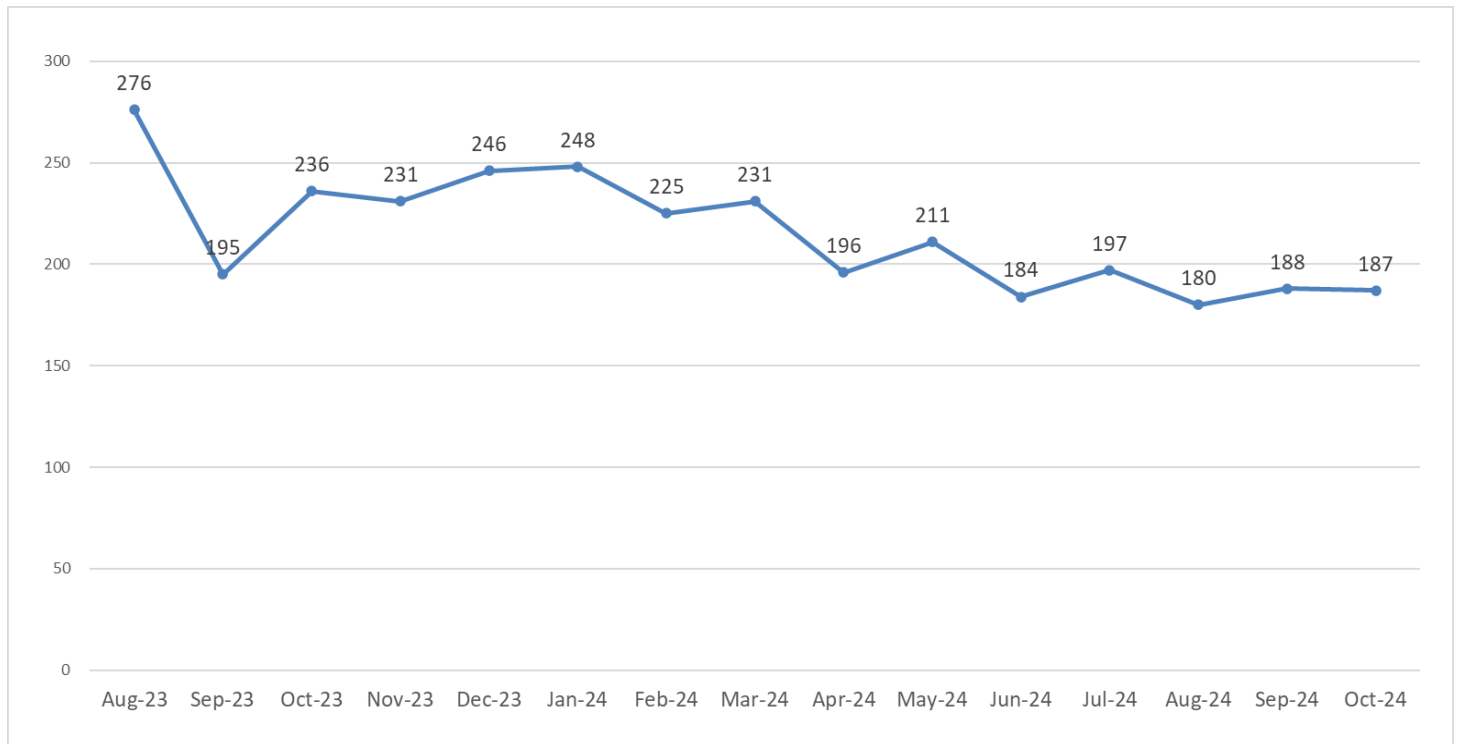




Table 8: Civil Commitment Admissions – Admissions Previous 15 Months by Hospital

Civil Commitment Admissions - previous 15 months															
	Aug-23	Sep-23	Oct-23	Nov-23	Dec-23	Jan-24	Feb-24	Mar-24	Apr-24	May-24	Jun-24	Jul-24	Aug-24	Sep-24	Oct-24
MedStar Washington Hospital Center	50	22	45	38	40	43	32	24	34	34	36	46	49	48	37
Psychiatric Institute of Washington, D.C	164	130	156	131	153	168	159	173	124	136	116	121	105	114	118
Saint Elizabeth's Hospital	3	3	0	3	5	5	4	4	2	3	2	0	1	1	2
United Medical Center	59	40	35	59	48	32	30	30	36	38	30	30	25	25	30
<b>TOTAL</b>	<b>276</b>	<b>195</b>	<b>236</b>	<b>231</b>	<b>246</b>	<b>248</b>	<b>225</b>	<b>231</b>	<b>196</b>	<b>211</b>	<b>184</b>	<b>197</b>	<b>180</b>	<b>188</b>	<b>187</b>
						lowest		highest							

Chart 4: Civil Commitment Admissions – Aggregate Admissions Most Recent 15 Months



## Rehabilitation Admissions and Patient Days

Table 9: Rehabilitation Admissions and Patient Days Current Compared with Previous Intervals

	CURRENT MONTH		LAST 3 MONTHS		LAST 12 MONTHS	
	Actual This Year	% Change From Last Year	Average This Year	% Change From Last Year	Average This Year	% Change From Last Year
<b>REHAB ADMISSIONS</b>						
<b>Acute</b>						
George Washington University Hospital	33	-2.94	29	-11.22	31	-2.92
<b>Subacute Rehab</b>						
MedStar National Rehabilitation Hospital	156	-11.86	150	-12.82	159	-0.94
<b>GRAND TOTAL</b>	<b>189</b>	<b>-10.43</b>	<b>179</b>	<b>-12.56</b>	<b>189</b>	<b>-1.26</b>
<b>REHAB PATIENT DAYS</b>						
<b>Acute</b>						
George Washington University Hospital	337	-5.60	372	0.09	382	1.19
<b>Subacute Rehab</b>						
MedStar National Rehabilitation Hospital	2,615	-7.63	2,588	-5.89	2,728	-2.67
<b>GRAND TOTAL</b>	<b>2952</b>	<b>-7.40</b>	<b>2960</b>	<b>-5.18</b>	<b>3109</b>	<b>-2.21</b>

## Skilled Nursing Facility Admissions and Patient Days

Table 10: SNF Admissions and Patient Days Current Compared with Previous Intervals\*

	CURRENT MONTH		LAST 3 MONTHS		LAST 12 MONTHS	
	Actual This Year	% Change From Last Year	Average This Year	% Change From Last Year	Average This Year	% Change From Last Year
<b>SNF ADMISSIONS</b>						
<b>Acute</b>						
Sibley Memorial Hospital	28	7.69	24	-6.49	23	17.30
<b>ACUTE TOTAL</b>	<b>28</b>	<b>7.69</b>	<b>24</b>	<b>-6.49</b>	<b>23</b>	<b>17.30</b>
<b>Specialty</b>						
BridgePoint Hospital -Capitol Hill	12	-55.56	17	-29.58	21	10.78
BridgePoint Hospital -National Harborside	11	-31.25	13	-25.93	16	2.60
<b>SPECIALTY TOTAL</b>	<b>23</b>	<b>-46.51</b>	<b>30</b>	<b>-28.00</b>	<b>38</b>	<b>7.08</b>
<b>GRAND TOTAL</b>	<b>51</b>	<b>-26.09</b>	<b>54</b>	<b>-19.80</b>	<b>61</b>	<b>10.74</b>
<b>SNF PATIENT DAYS</b>						
<b>Acute</b>						
Sibley Memorial Hospital	631	18.61	572	22.22	507	16.65
<b>ACUTE TOTAL</b>	<b>631</b>	<b>18.61</b>	<b>572</b>	<b>22.22</b>	<b>507</b>	<b>16.65</b>
<b>Specialty</b>						
BridgePoint Hospital -Capitol Hill	3,519	7.29	3,381	3.68	3,341	-0.86
BridgePoint Hospital -National Harborside	3,601	-2.57	3,601	0.13	3,707	3.18
<b>SPECIALTY TOTAL</b>	<b>7120</b>	<b>2.06</b>	<b>6982</b>	<b>1.82</b>	<b>7048</b>	<b>1.22</b>
<b>GRAND TOTAL</b>	<b>7751</b>	<b>3.24</b>	<b>7554</b>	<b>3.12</b>	<b>7555</b>	<b>2.13</b>

\*UMC closed their SNF unit in April 2020 during peak of COVID-19, They were therefore removed from this analysis.

## Newborn and Neonatal ICU Data: Admissions and Patient Days

Table 11: Newborn Admissions and Patient Days– Current Compared to Previous Intervals

	CURRENT MONTH		LAST 3 MONTHS		LAST 12 MONTHS	
	Actual This Year	% Change From Last Year	Average This Year	% Change From Last Year	Average This Year	% Change From Last Year
<b>NEWBORN ADMISSIONS</b>						
George Washington University Hospital	122	-27.38	144	-13.77	149	0.68
Howard University Hospital	50	-52.38	72	-28.48	81	-14.63
MedStar Georgetown University Hospital	73	-6.41	75	6.16	67	1.26
MedStar Washington Hospital Center	305	8.54	306	4.91	293	-0.42
Sibley Memorial Hospital	327	2.19	334	5.25	317	-0.08
<b>ACUTE TOTAL</b>	<b>877</b>	<b>-7.88</b>	<b>931</b>	<b>-1.72</b>	<b>907</b>	<b>-1.47</b>
<b>NEWBORN PATIENT DAYS</b>						
George Washington University Hospital	242	-22.44	284	-6.17	285	7.29
Howard University Hospital	306	-3.77	274	-27.35	321	-6.76
MedStar Georgetown University Hospital	168	-10.16	169	3.67	164	5.65
MedStar Washington Hospital Center	1,388	5.87	1,318	-0.45	1,298	-1.34
Sibley Memorial Hospital	887	-0.67	902	5.82	892	8.37
<b>ACUTE TOTAL</b>	<b>2991</b>	<b>-0.99</b>	<b>2947</b>	<b>-2.38</b>	<b>2959</b>	<b>1.93</b>

Table 12: Newborn Admissions by Hospital Previous 15 Months

	Newborn Admissions - previous 15 months														
	Aug-23	Sep-23	Oct-23	Nov-23	Dec-23	Jan-24	Feb-24	Mar-24	Apr-24	May-24	Jun-24	Jul-24	Aug-24	Sep-24	Oct-24
George Washington University Hospital	181	152	168	164	114	159	139	146	147	155	149	178	154	156	122
Howard University Hospital	102	95	105	91	99	101	88	79	69	77	78	71	76	90	50
MedStar Georgetown University Hospital	63	70	78	64	59	68	46	67	51	87	70	70	78	73	73
MedStar Washington Hospital Center	304	290	281	327	291	288	257	282	284	283	287	298	323	290	305
Sibley Memorial Hospital	328	305	320	297	295	290	319	331	290	336	312	334	368	308	327
<b>TOTAL</b>	<b>978</b>	<b>912</b>	<b>952</b>	<b>943</b>	<b>858</b>	<b>906</b>	<b>849</b>	<b>905</b>	<b>841</b>	<b>938</b>	<b>896</b>	<b>951</b>	<b>999</b>	<b>917</b>	<b>877</b>
					lowest			highest							

Chart 5: Newborn Admissions – Most Recent 15 Months

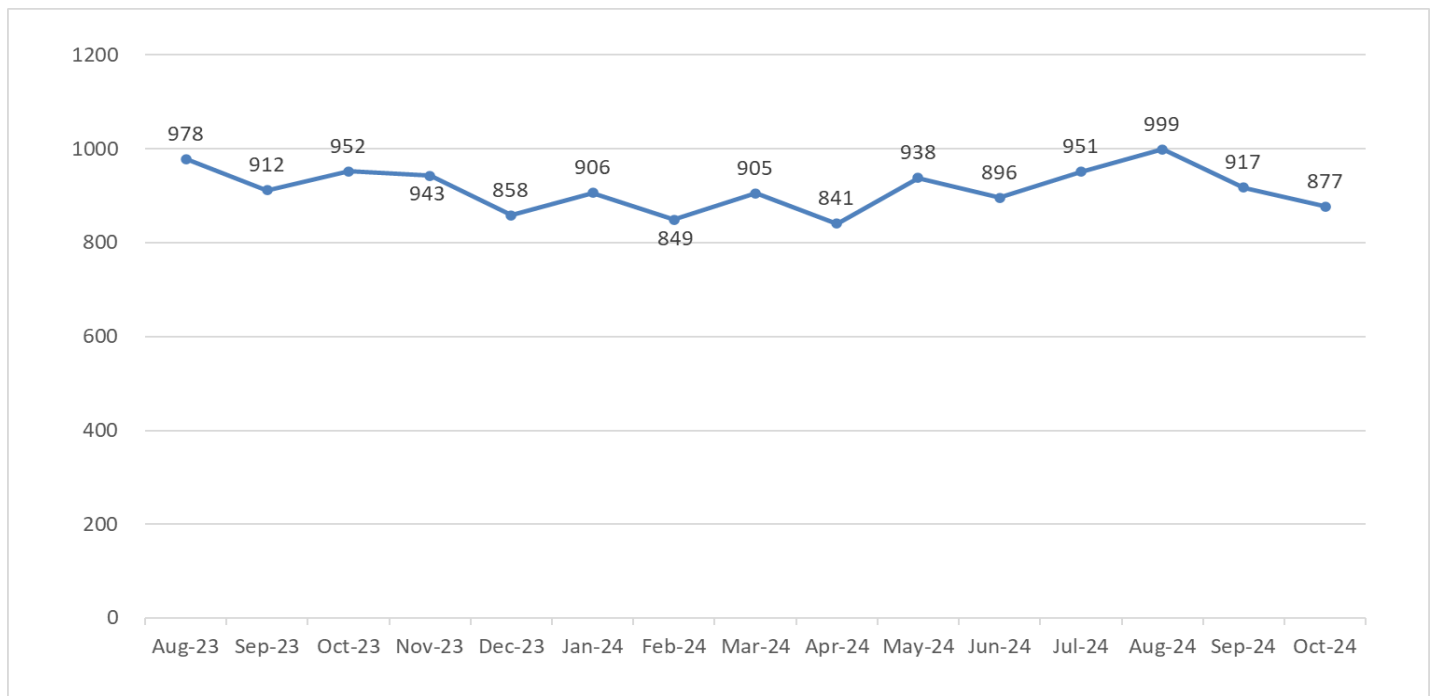


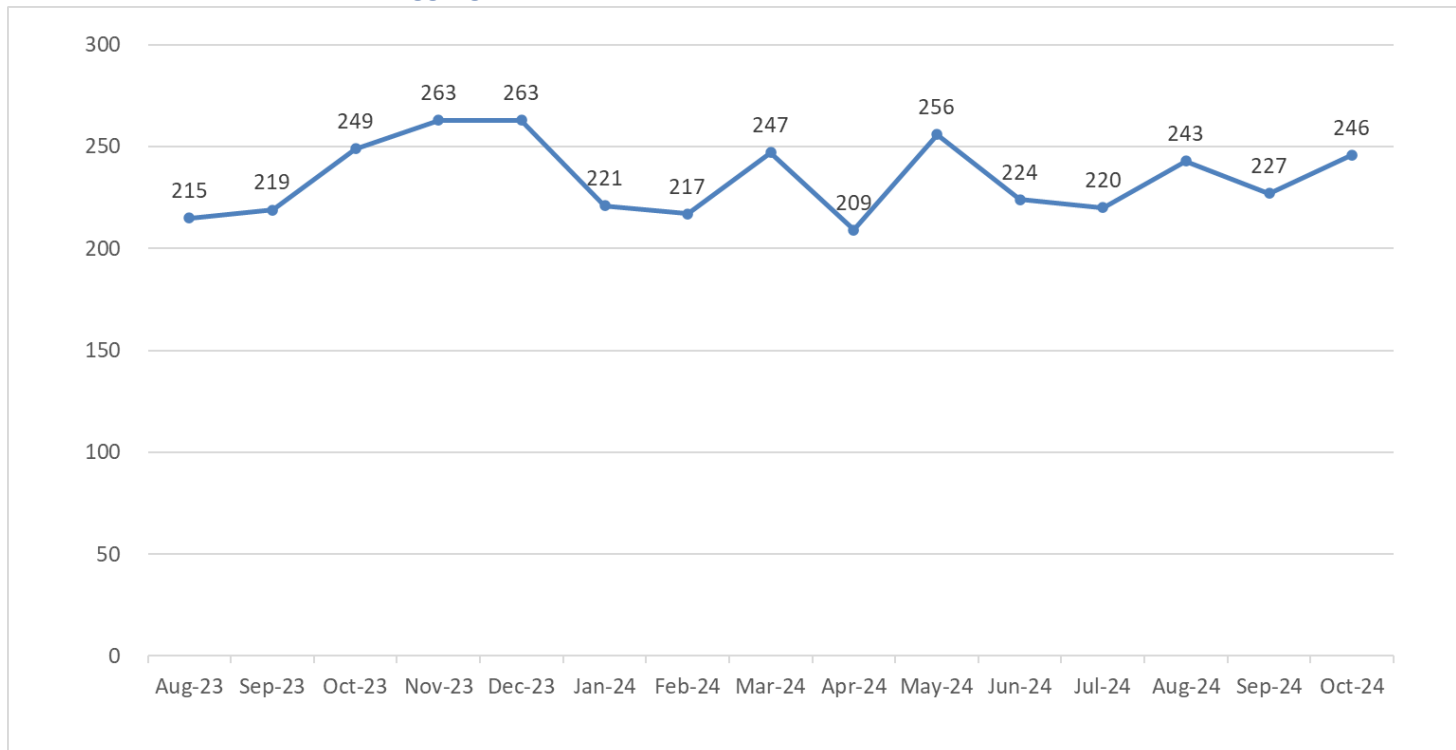
Table 13: Neonatal ICU Admissions and Patient Days– Current Compared to Previous Intervals

	CURRENT MONTH		LAST 3 MONTHS		LAST 12 MONTHS	
	Actual This Year	% Change From Last Year	Average This Year	% Change From Last Year	Average This Year	% Change From Last Year
<b>NEONATAL ADMISSIONS</b>						
Children's National Hospital	68	-6.85	70	6.57	75	2.97
George Washington University Hospital	28	-3.45	32	13.10	27	23.22
Howard University Hospital	7	250.00	6	171.43	5	7.55
MedStar Georgetown University Hospital	23	-11.54	24	0.00	24	-9.49
MedStar Washington Hospital Center	120	0.84	106	-0.93	105	0.00
<b>ACUTE TOTAL</b>	<b>246</b>	<b>-1.20</b>	<b>239</b>	<b>4.83</b>	<b>236</b>	<b>2.24</b>
<b>NEONATAL PATIENT DAYS</b>						
Children's National Hospital	2,091	2.00	2,036	-0.34	1,998	1.34
George Washington University Hospital	530	23.83	453	16.57	434	17.90
Howard University Hospital	47	95.83	60	1.69	61	-20.09
MedStar Georgetown University Hospital	588	80.37	614	76.61	578	41.36
MedStar Washington Hospital Center	901	4.65	815	-4.53	827	-2.70
<b>ACUTE TOTAL</b>	<b>4157</b>	<b>12.69</b>	<b>3978</b>	<b>7.75</b>	<b>3898</b>	<b>6.07</b>

Table 14: Neonatal Admissions by Hospital Previous 15 Months

	Neonatal Admissions - previous 15 months														
	Aug-23	Sep-23	Oct-23	Nov-23	Dec-23	Jan-24	Feb-24	Mar-24	Apr-24	May-24	Jun-24	Jul-24	Aug-24	Sep-24	Oct-24
Children's National Hospital	65	60	73	89	88	73	70	70	81	86	70	64	68	75	68
George Washington University Hospital	23	32	29	29	29	24	25	25	20	32	24	26	39	28	28
Howard University Hospital	2	3	2	6	5	3	6	3	6	5	2	2	8	4	7
MedStar Georgetown University Hospital	25	22	26	23	23	23	25	33	23	25	17	21	32	18	23
MedStar Washington Hospital Center	100	102	119	116	118	98	91	116	79	108	111	107	96	102	120
<b>TOTAL</b>	<b>215</b>	<b>219</b>	<b>249</b>	<b>263</b>	<b>263</b>	<b>221</b>	<b>217</b>	<b>247</b>	<b>209</b>	<b>256</b>	<b>224</b>	<b>220</b>	<b>243</b>	<b>227</b>	<b>246</b>
				lowest				highest							

Chart 6: Neonatal Admissions Aggregate Most Recent 15 Months



## Emergency Department Visits

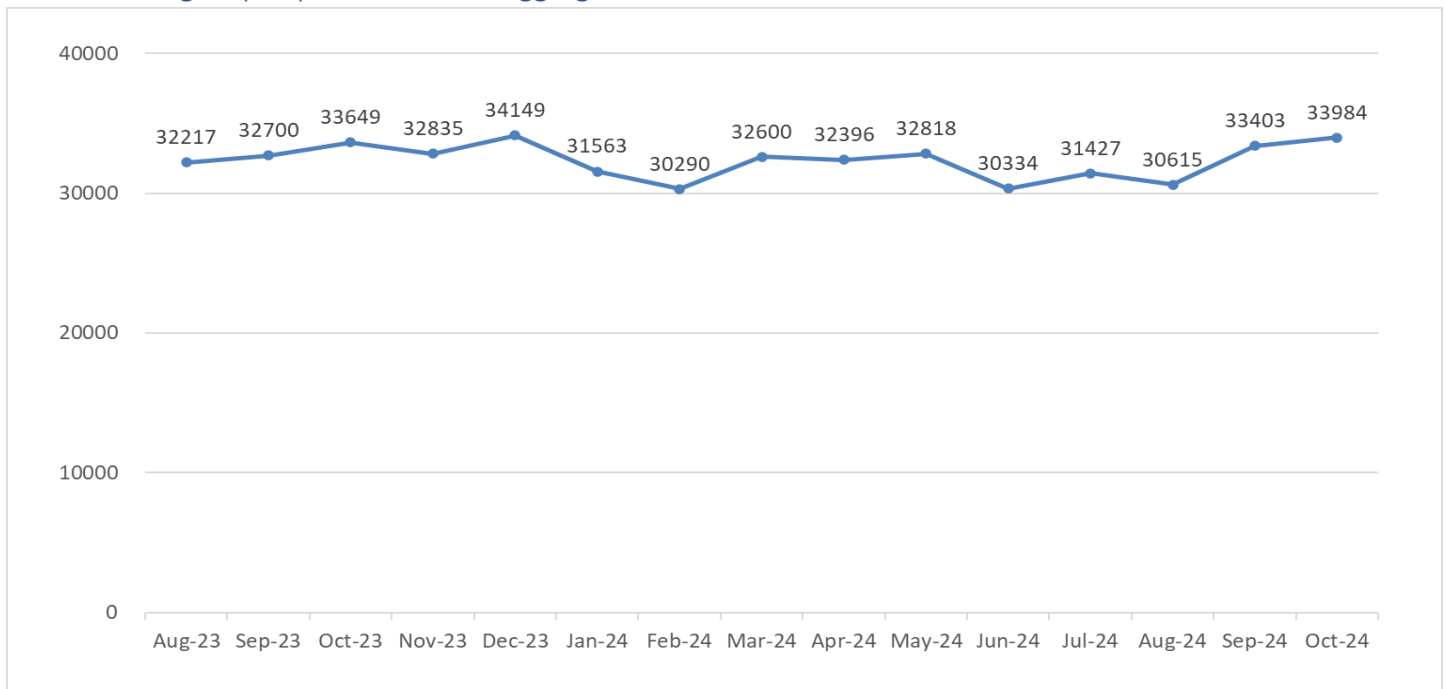
Table 15: Emergency Department Visits– Current Compared to Previous Intervals

	CURRENT MONTH		LAST 3 MONTHS		LAST 12 MONTHS	
	Actual This Year	% Change From Last Year	Average This Year	% Change From Last Year	Average This Year	% Change From Last Year
<b>EMERGENCY DEPARTMENT VISITS</b>						
Children's National Hospital	6,611	9.09	5,984	7.14	6,003	-2.36
Children's National Hospital at UMC	2,262	-2.67	2,071	-0.53	2,131	-3.45
George Washington University Hospital	4,716	-4.07	4,541	-10.14	4,335	-1.85
Howard University Hospital	4,034	-5.04	3,987	-7.94	3,990	-4.36
MedStar Georgetown University Hospital	3,410	27.19	3,233	18.06	3,080	18.64
MedStar Washington Hospital Center	6,296	-12.21	6,437	-5.84	6,424	-0.79
Sibley Memorial Hospital	3,655	8.04	3,431	4.15	3,304	5.21
United Medical Center	3,000	4.71	2,983	1.65	2,933	0.49
<b>ACUTE TOTAL</b>	<b>33984</b>	<b>1.00</b>	<b>32667</b>	<b>-0.57</b>	<b>32201</b>	<b>0.40</b>

Table 16: Emergency Department Visits by Hospital Previous 15 Months

Emergency Department Admissions - previous 15 months															
	Aug-23	Sep-23	Oct-23	Nov-23	Dec-23	Jan-24	Feb-24	Mar-24	Apr-24	May-24	Jun-24	Jul-24	Aug-24	Sep-24	Oct-24
Children's National Hospital @ UMC	1675	2248	2324	2357	2467	2145	2193	2419	2356	2283	1606	1537	1491	2461	2262
Children's National Hospital	4825	5872	6060	6583	6805	6087	5809	6350	6405	6127	4823	5091	4582	6760	6611
George Washington University Hospital	5160	5083	4916	4662	4752	3797	3811	4173	4229	4052	4477	4445	4436	4470	4716
Howard University Hospital	4371	4373	4248	4032	4031	4164	3852	3981	3951	4026	3937	3951	4038	3888	4034
MedStar Georgetown University Hospital	2652	2882	2681	2670	2993	2876	2938	3155	3164	3244	3027	3195	3217	3072	3410
MedStar Washington Hospital Center	7064	6273	7172	6437	6850	6131	6001	6384	6291	6576	6483	6628	6660	6356	6296
Sibley Memorial Hospital	3393	3107	3383	3178	3248	3393	3036	3191	3189	3533	3045	3539	3250	3388	3655
United Medical Center	3077	2862	2865	2916	3003	2970	2650	2947	2811	2977	2936	3041	2941	3008	3000
<b>TOTAL</b>	<b>32217</b>	<b>32700</b>	<b>33649</b>	<b>32835</b>	<b>34149</b>	<b>31563</b>	<b>30290</b>	<b>32600</b>	<b>32396</b>	<b>32818</b>	<b>30334</b>	<b>31427</b>	<b>30615</b>	<b>33403</b>	<b>33984</b>
					lowest			highest							

Chart 7: Emergency Department Visits Aggregate – Most Recent 15 Months



## Ambulatory Surgeries

Table 17: Ambulatory Surgeries by Hospital Current Compared with Previous Intervals

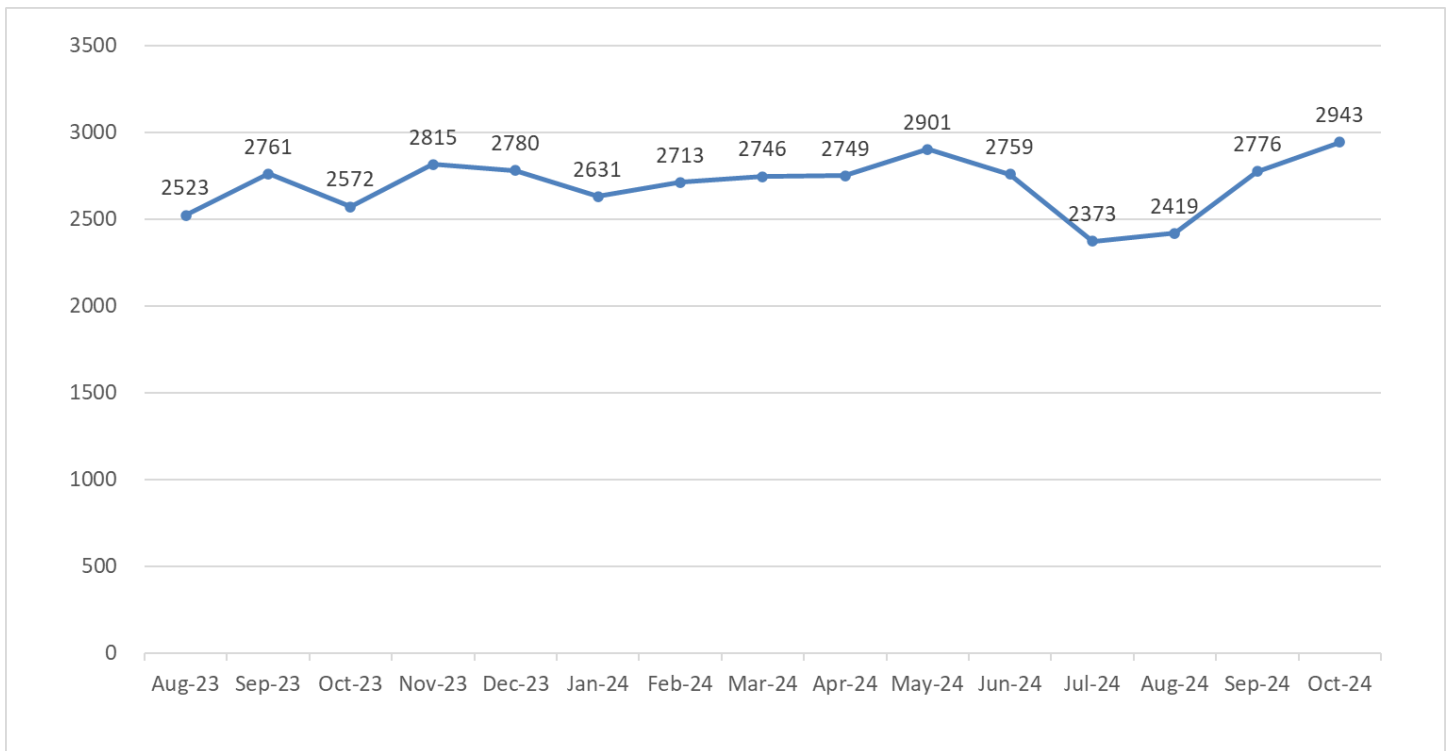
	CURRENT MONTH		LAST 3 MONTHS		LAST 12 MONTHS	
	Actual This Year	% Change From Last Year	Average This Year	% Change From Last Year	Average This Year	% Change From Last Year
<b>AMBULATORY SURGERIES</b>						
Children's National Hospital	1,473	12.44	1,333	-0.35	1,325	2.24
George Washington University Hospital	1,253	10.79	1,183	5.50	1,159	9.60
Howard University Hospital	556	-11.18	533	-6.88	528	-4.38
MedStar Georgetown University Hospital	865	13.37	779	3.00	781	6.32
MedStar Washington Hospital Center	996	3.43	915	3.74	886	1.50
Sibley Memorial Hospital	861	15.73	779	10.39	734	1.45
United Medical Center	67	-33.00	71	-32.17	106	-1.24
<b>ACUTE TOTAL</b>	<b>6071</b>	<b>7.70</b>	<b>5592</b>	<b>2.06</b>	<b>5519</b>	<b>3.27</b>

## Observation Patients

Table 18: Observation Admissions by Hospital Current Compared with Previous Intervals

	CURRENT MONTH		LAST 3 MONTHS		LAST 12 MONTHS	
	Actual This Year	% Change From Last Year	Average This Year	% Change From Last Year	Average This Year	% Change From Last Year
<b>OBSERVATIONS PATIENTS</b>						
<b>Acute</b>						
Children's National Hospital	1,280	26.73	1,090	6.76	1,100	-3.44
George Washington University Hospital	118	59.46	101	1.68	97	-12.58
Howard University Hospital	96	-23.20	93	-29.47	102	-38.60
MedStar Georgetown University Hospital	342	27.14	351	21.71	338	28.07
MedStar Washington Hospital Center	577	-3.35	564	-2.70	568	0.35
Sibley Memorial Hospital	368	9.85	346	4.43	330	-5.59
United Medical Center	162	0.00	168	0.40	184	14.39
<b>ACUTE TOTAL</b>	<b>2943</b>	<b>14.42</b>	<b>2713</b>	<b>3.59</b>	<b>2717</b>	<b>-1.37</b>

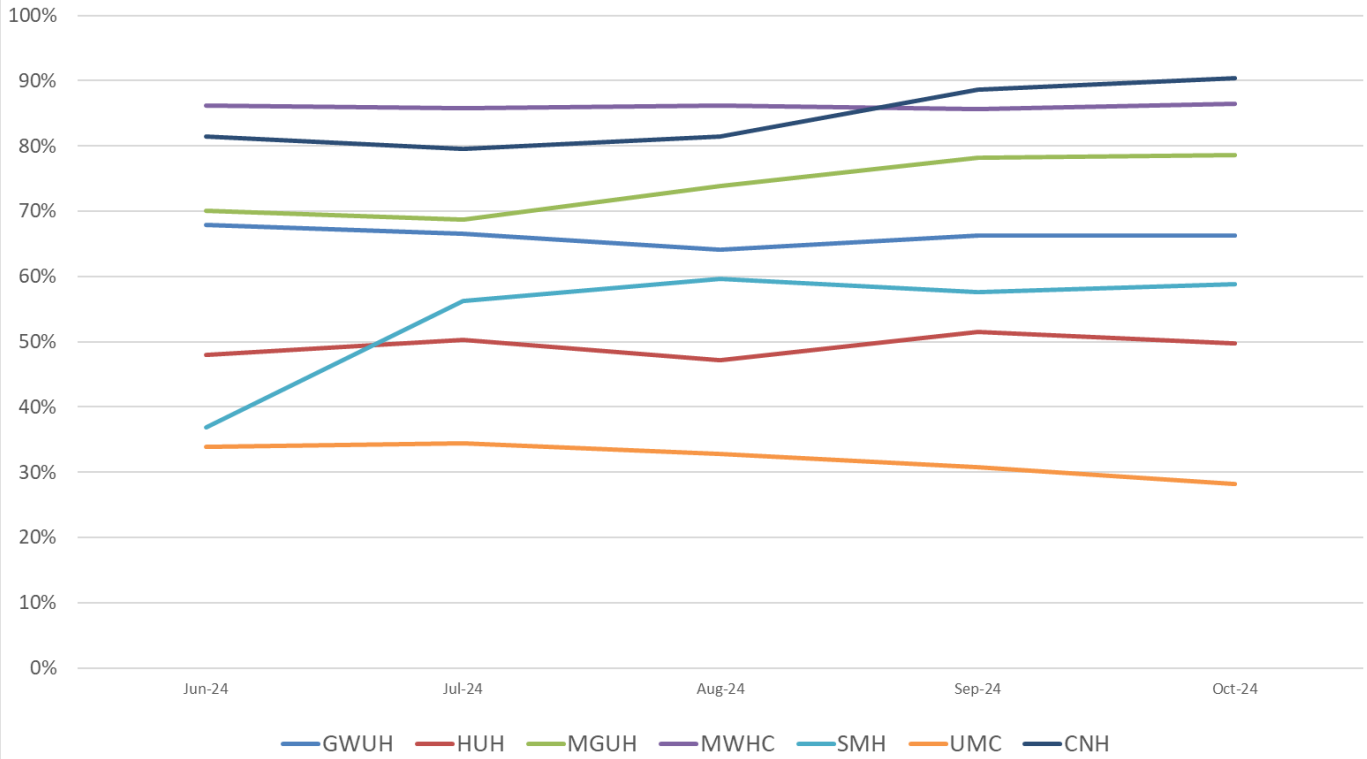
Chart 8: Observation Patient Admissions Aggregate – Most Recent 15 Months



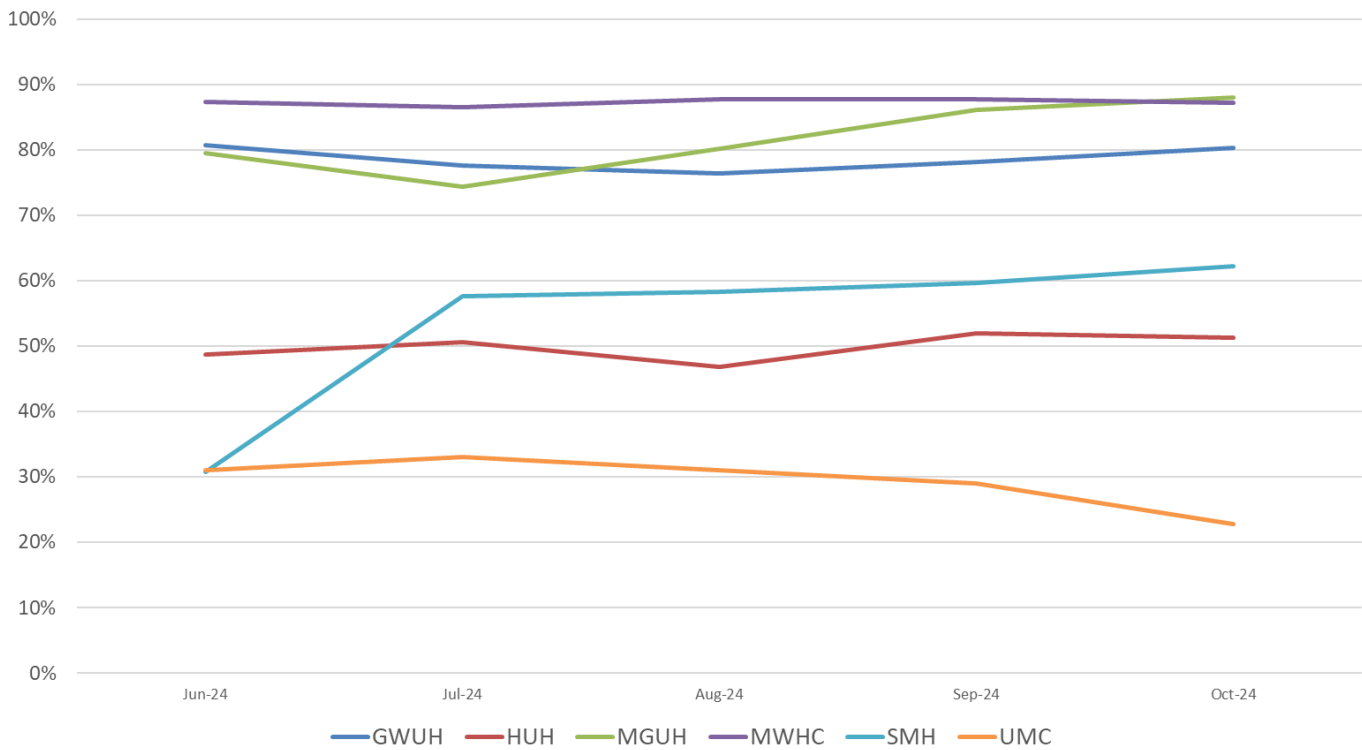
## Average Daily Census By Hospital By Service

### Occupancy Rates By Unit Type Acute Care Hospitals – 2024

Total Occupancy Rate by Hospital



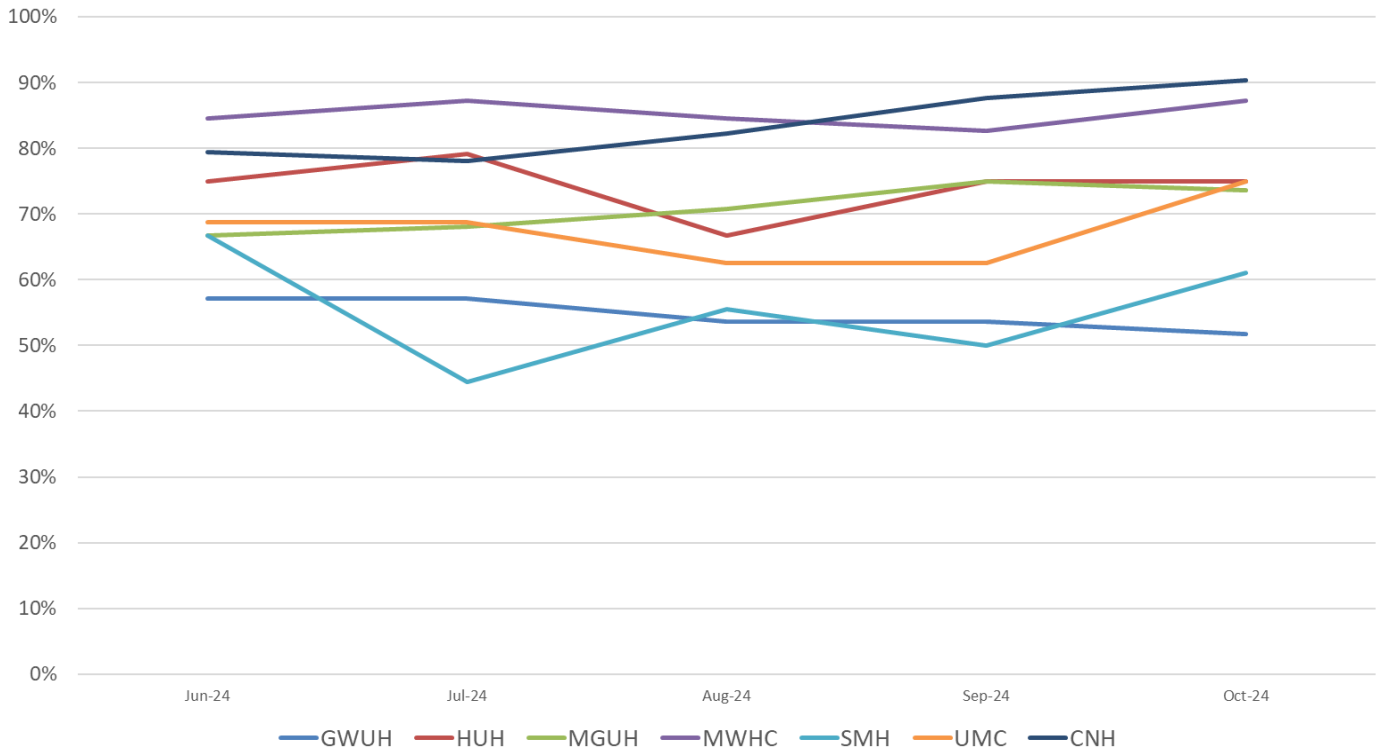
Med-Surg Occupancy Rate by Hospital



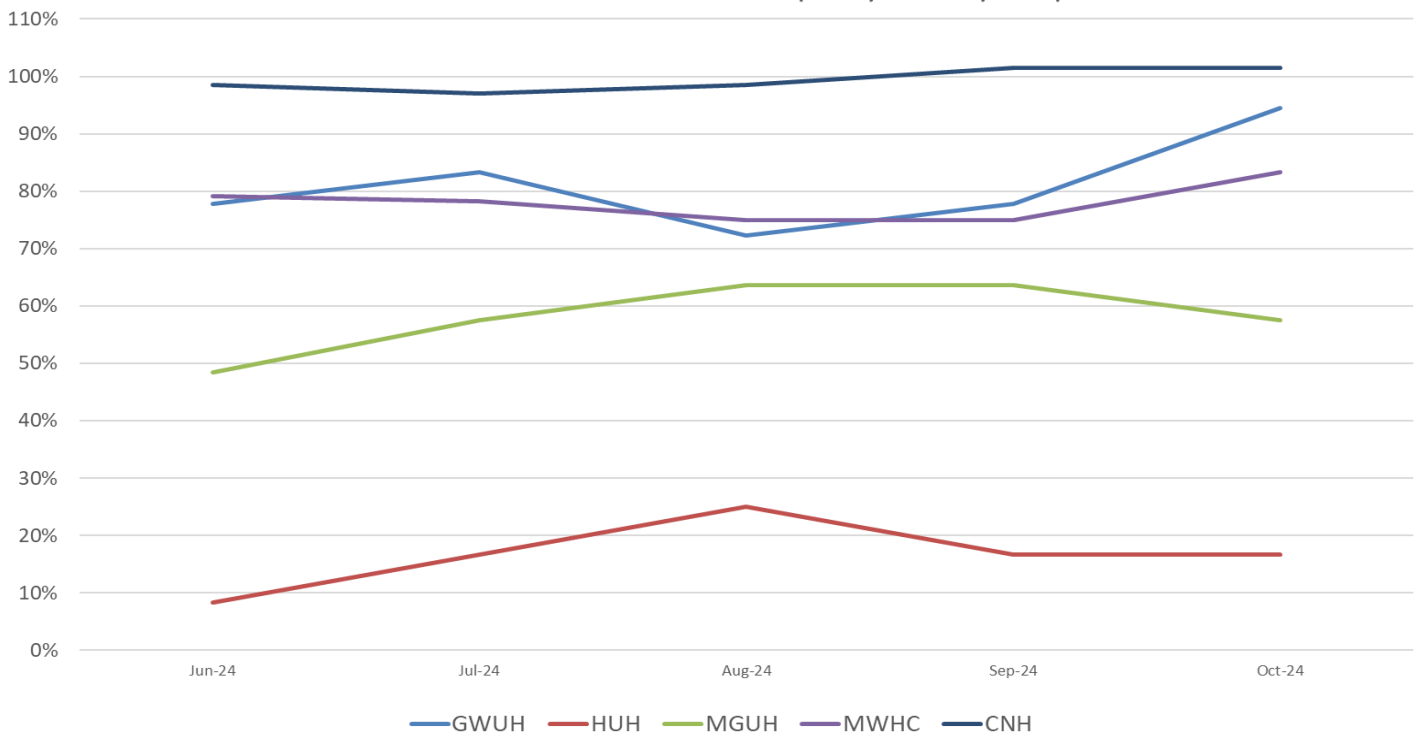


## Occupancy Rates By Unit Type Acute Care Hospitals – 2024

### ICU Occupancy Rate by Hospital

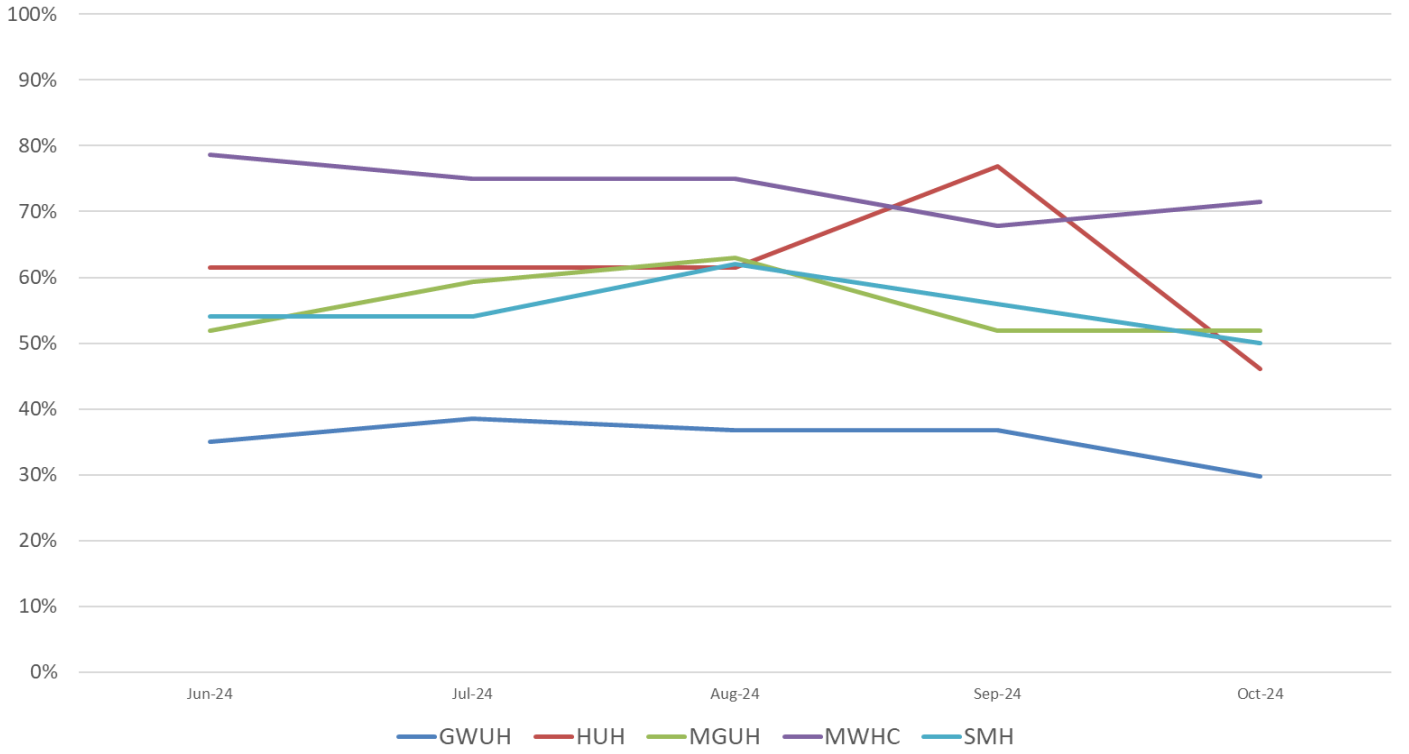


### Neonatal Intensive Care Unit Occupancy Rate by Hospital

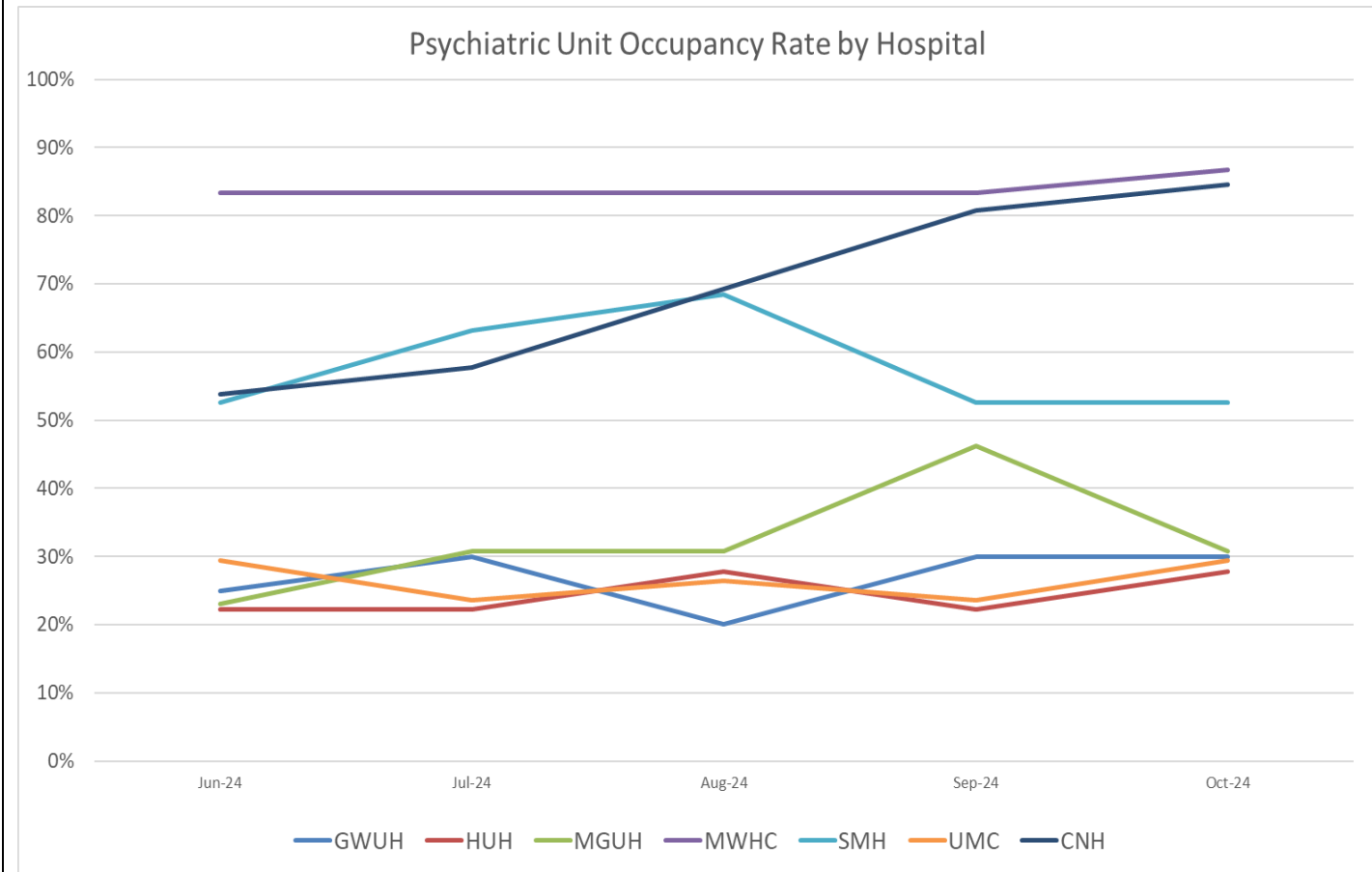


# Occupancy Rates By Unit Type Acute Care Hospitals – 2024

## OB-GYN Occupancy Rate by Hospital

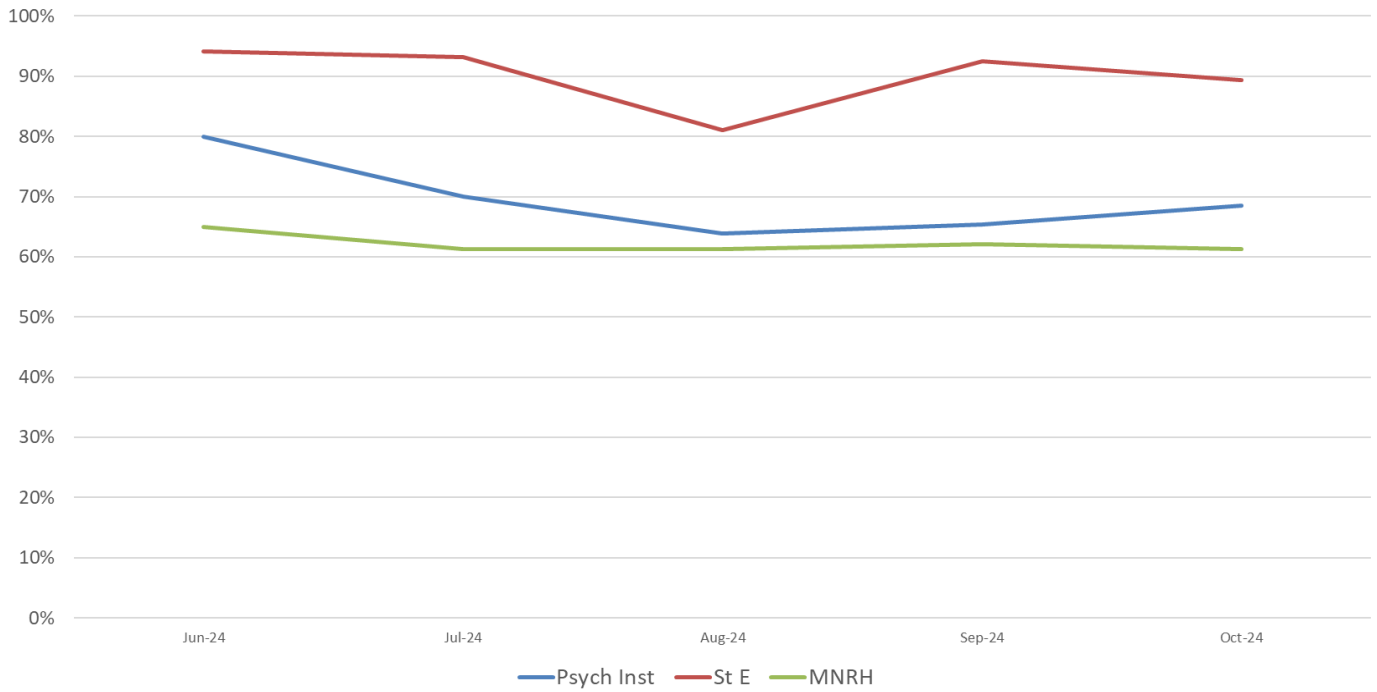


## Occupancy Rates By Unit Type Acute Care Hospitals – 2024

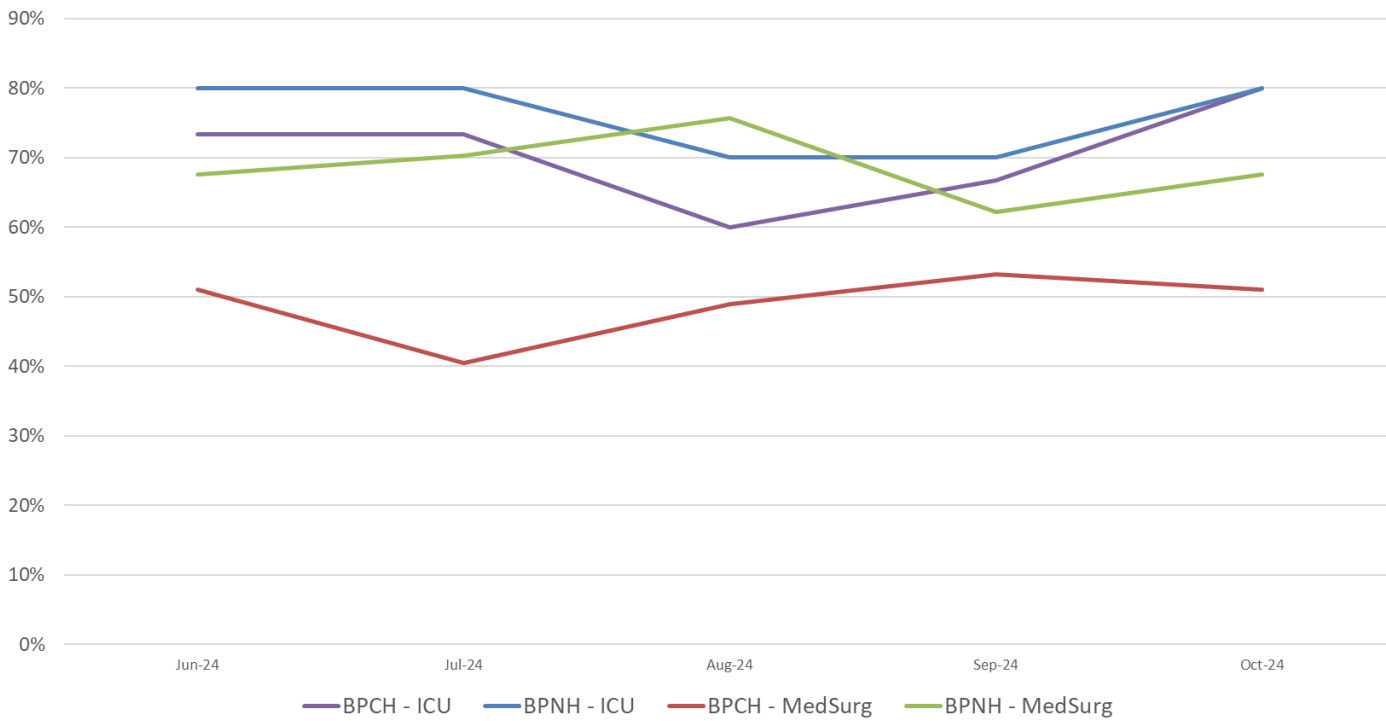


## Occupancy Rates Specialty Hospitals - 2024

Specialty Facility Occupancy Rate by Hospital



Long Term Acute Care Facility Occupancy Rate by Hospital



# Occupancy Rates Specialty Hospitals - 2024

## Skilled Nursing Facility Occupancy Rate by Hospital

