

# Utilization Indicators Calendar Year 2023



## About This Report

The charts and tables in this publication are intended to provide aggregate and comparative data on health care facility utilization in the District of Columbia. This report includes a new psychiatric admission breakout for civil commitment admissions.

Please note, though not annotated on every graphic, the impact of the closure of Providence Hospital – Ascension in the Spring of 2019 and the COVID-19 pandemic beginning in the Spring of 2020 can be seen in utilization patterns throughout this report.

The source of the data is the District of Columbia Hospital Association’s Monthly Utilization Survey (self-reported by individual facilities).

Report Issued April 2024



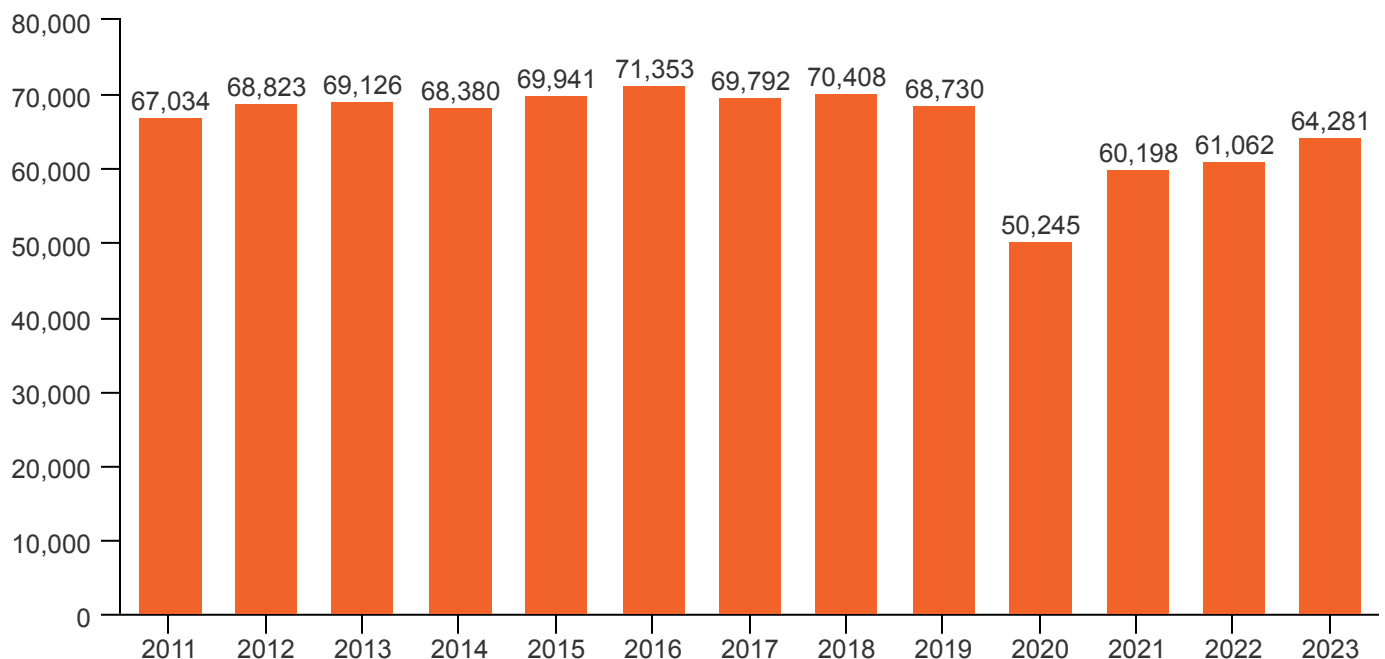
District of Columbia Hospital Association  
1152 15th Street NW | Suite 900  
Washington, D.C. | 20005  
dcha.org

# AMBULATORY SURGERIES

ACUTE TOTAL	2019	2020	2021	2022	2023	% Change 2022-2023
Children's National	13,151	10,342	12,307	13,999	15,772	12.7%
The George Washington University Hospital	17,030	13,048	15,917	13,452	12,833	-4.6%
Howard University Hospital	9,324	5,386	6,292	6,079	6,572	8.1%
MedStar Georgetown University Hospital	8,273	6,041	7,652	8,145	8,694	6.7%
MedStar Washington Hospital Center	10,631	8,323	10,064	9,989	10,448	4.6%
Sibley Memorial Hospital	9,010	6,194	6,852	7,739	8,639	11.6%
United Medical Center	1,311	911	1,114	1,659	1,323	-20.3%
<b>GRAND TOTAL</b>	<b>68,730</b>	<b>50,245</b>	<b>60,198</b>	<b>61,062</b>	<b>64,281</b>	<b>5.3%</b>

**Note:** The impact of COVID-19 on utilization during 2020 is visible in the decreased volumes. Although the impact of COVID-19 is still declining and 2023 numbers show a noticeable upward trend compared to the 2022 volumes, the increase in 2023 remains below pre-COVID levels.

## Ambulatory Surgery



**Note:** Calculations are based on reported utilization figures for the District of Columbia acute non-federal hospitals. The 2020 decline is primarily attributed to decreased volumes during COVID-19.

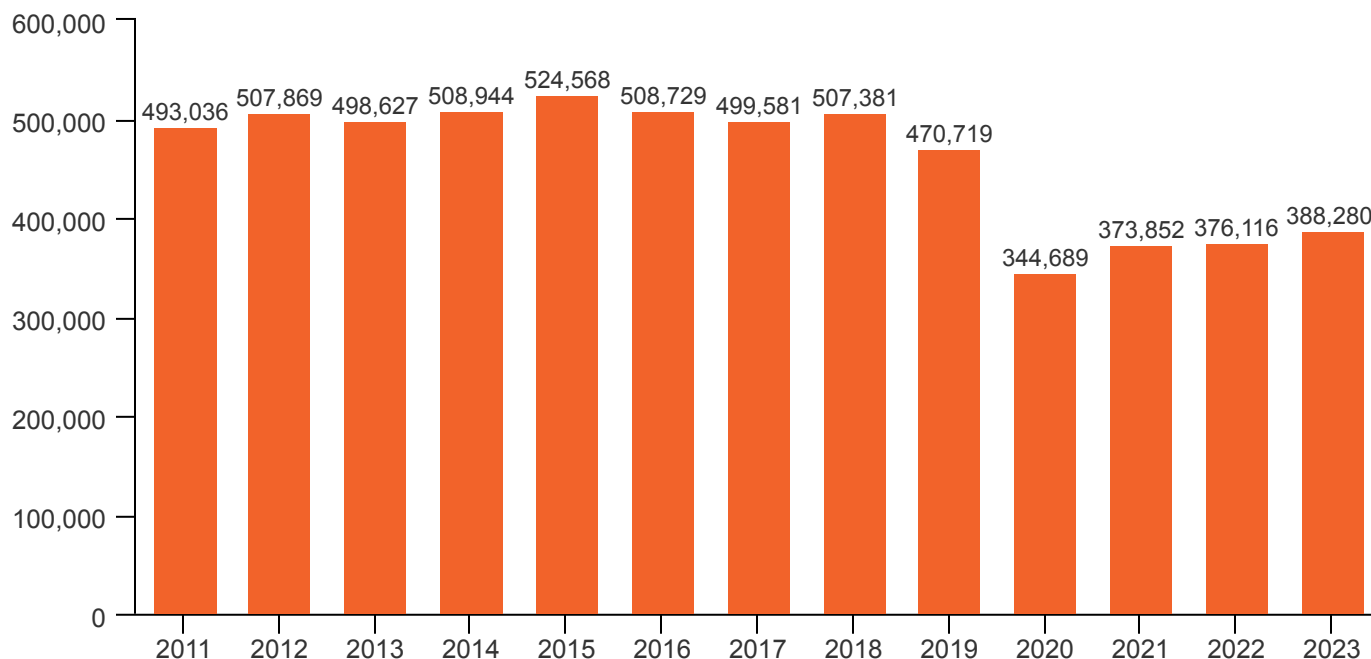
# EMERGENCY DEPARTMENT VISITS

ACUTE TOTAL	2019	2020	2021	2022	2023	% Change 2022-2023
Children's National @ UMC	31,199	18,557	24,106	29,227	25,882	-11.4%
Children's National	89,233	57,877	71,181	75,517	73,223	-3.0%
The George Washington University Hospital	70,775	51,472	46,976	45,531	55,031	20.9%
Howard University Hospital	52,977	42,513	47,567	48,330	50,019	3.5%
MedStar Georgetown University Hospital	32,589	26,172	30,430	30,383	31,991	5.3%
MedStar Washington Hospital Center*	95,669	77,842	81,687	76,945	78,824	2.4%
Providence Hospital - Ascension	4,805	-	-	-	-	N/A
Sibley Memorial Hospital	41,611	30,996	33,935	34,773	38,165	9.8%
United Medical Center	50,861	39,260	37,970	35,410	35,145	-0.7%
<b>GRAND TOTAL</b>	<b>470,719</b>	<b>344,689</b>	<b>373,852</b>	<b>376,116</b>	<b>388,280</b>	<b>3.2%</b>

**Note:** ED visits saw a significant decrease from 2019 to 2020 due to COVID-19. Although three hospitals saw a slight decline in total ED volumes in 2023, the remaining four trended in the opposite direction, translating into a 12.6% increase compared to 2020 volumes.

\* Does not include MedStar Washington Hospital Center trauma (MedStar unit) visits.

## Emergency Department Visits



**Note:** Calculations are based on reported utilization figures for the District of Columbia acute non-federal hospitals. The decrease in ED visits in 2019 is primarily related to the closure of Providence Hospital and its associated ED, and the decrease in 2020 is primarily attributed to the impact of COVID-19. Although volumes in 2023 continue to rise as the impact of COVID-19 is starting to wane, they remained below the pre-COVID-19 levels.

# TOTAL ADMISSIONS

ACUTE	2019	2020	2021	2022	2023	% Change 2022-2023
Children's National	16,260	12,993	15,580	14,298	14,090	-1.5%
The George Washington University Hospital	21,170	18,224	18,421	16,364	16,617	1.5%
Howard University Hospital	8,846	7,656	7,941	7,406	7,276	-1.8%
MedStar Georgetown University Hospital	15,291	14,097	15,015	13,936	14,137	1.4%
MedStar Washington Hospital Center	33,728	29,735	30,423	28,784	29,697	3.2%
Providence Hospital - Ascension	88	-	-	-	-	N/A
Sibley Memorial Hospital	12,099	10,726	11,542	11,031	11,564	4.8%
United Medical Center	4,844	4,587	3,949	3,465	3,501	1.0%
<b>ACUTE TOTAL</b>	<b>112,326</b>	<b>98,018</b>	<b>102,871</b>	<b>95,284</b>	<b>96,882</b>	<b>1.7%</b>

SPECIALTY	2019	2020	2021	2022	2023	% Change 2022-2023
BridgePoint Hospital Capitol Hill	618	907	897	793	517	-34.8%
BridgePoint Hospital National Harborside	575	779	732	641	426	-33.5%
MedStar National Rehabilitation Hospital	1,957	1,882	1,859	1,788	1,954	9.3%
Psychiatric Institute of Washington	5,027	4,736	4,395	3,915	4,449	13.6%
Saint Elizabeths Hospital	428	198	166	210	329	56.7%
<b>SPECIALTY TOTAL</b>	<b>8,605</b>	<b>8,502</b>	<b>8,049</b>	<b>7,347</b>	<b>7,675</b>	<b>4.5%</b>
<b>GRAND TOTAL</b>	<b>120,931</b>	<b>106,520</b>	<b>110,920</b>	<b>102,631</b>	<b>104,557</b>	<b>1.9%</b>

**Total Admissions Notes:** Beginning with the 2019 report, these measures for acute care facilities exclude newborns and skilled nursing facility (SNF) patients. SNF admissions are shown separately from acute care data to allow for easier comparisons of the volumes of facilities that have SNF units and those that do not. All hospitals except four (BridgePoint Hospital Capitol Hill, BridgePoint Hospital National Harborside, Children's National and Howard University Hospital) saw an increase in admissions volumes in 2023. There were 104,557 total admissions in 2023 translating into a 1.9% increase compared to 2022.

# TOTAL PATIENT DAYS

ACUTE	2019	2020	2021	2022	2023	% Change 2022-2023
Children's National	77,286	72,684	76,226	82,713	78,315	-5.3%
The George Washington University Hospital	113,906	103,407	100,917	97,788	99,857	2.1%
Howard University Hospital	49,007	43,178	42,993	44,280	40,885	-7.7%
MedStar Georgetown University Hospital	113,237	107,384	114,736	116,299	115,378	-0.8%
MedStar Washington Hospital Center	235,008	219,724	231,551	239,467	232,271	-3.0%
Providence Hospital - Ascension	40,708	-	-	-	-	N/A
Sibley Memorial Hospital	49,062	55,992	57,719	56,089	56,891	1.4%
United Medical Center	27,513	38,155	25,693	21,382	19,919	-6.8%
<b>ACUTE TOTAL</b>	<b>705,727</b>	<b>640,524</b>	<b>649,835</b>	<b>658,018</b>	<b>643,516</b>	<b>-2.2%</b>

SPECIALTY	2019	2020	2021	2022	2023	% Change 2022-2023
BridgePoint Hospital Capitol Hill	15,396	15,523	15,697	14,987	14,235	-5.0%
BridgePoint Hospital National Harborside	14,913	15,202	14,370	14,077	12,324	-12.5%
MedStar National Rehabilitation Hospital	34,330	33,084	31,413	32,533	33,421	2.7%
Psychiatric Institute of Washington	41,761	41,069	39,278	36,613	38,672	5.6%
Saint Elizabeths Hospital	97,741	82,037	74,319	72,102	84,399	17.1%
<b>SPECIALTY TOTAL</b>	<b>204,141</b>	<b>186,915</b>	<b>175,077</b>	<b>170,312</b>	<b>183,051</b>	<b>7.5%</b>
<b>GRAND TOTAL</b>	<b>909,868</b>	<b>827,439</b>	<b>824,912</b>	<b>828,330</b>	<b>826,567</b>	<b>-0.2%</b>

# PSYCHIATRIC ADMISSIONS

ACUTE	2019	2020	2021	2022	2023	% Change 2022-2023
Children's National	947	836	682	656	657	0.2%
The George Washington University Hospital	722	541	573	434	560	29.0%
Howard University Hospital	675	432	504	442	364	-17.6%
MedStar Georgetown University Hospital	441	366	423	384	362	-5.7%
MedStar Washington Hospital Center	1,866	1,633	1,106	1,313	1,332	1.4%
Sibley Memorial Hospital	621	457	495	508	545	7.3%
United Medical Center	1,443	1,406	1,382	1,232	1,122	-8.9%
<b>ACUTE TOTAL</b>	<b>6,715</b>	<b>5,671</b>	<b>5,165</b>	<b>4,969</b>	<b>4,942</b>	<b>-0.5%</b>

SPECIALTY	2019	2020	2021	2022	2023	% Change 2022-2023
Psychiatric Institute of Washington	5,027	4,736	4,395	3,915	4,449	13.6%
Saint Elizabeths Hospital	428	198	166	210	329	56.7%
<b>SPECIALTY TOTAL</b>	<b>5,455</b>	<b>4,934</b>	<b>4,561</b>	<b>4,125</b>	<b>4,778</b>	<b>15.8%</b>
<b>GRAND TOTAL</b>	<b>12,170</b>	<b>10,665</b>	<b>9,726</b>	<b>9,094</b>	<b>9,720</b>	<b>6.9%</b>

# CIVIL COMMITMENT ADMISSIONS

	2022	2023	% Change 2022-2023
MedStar Washington Hospital Center	473	471	-0.4%
Psychiatric Institute of Washington	1,033	1,496	44.8%
Saint Elizabeths Hospital	26	43	65.4%
United Medical Center	651	647	-0.6%
<b>GRAND TOTAL</b>	<b>2,183</b>	<b>2,657</b>	<b>21.7%</b>

*Note: Although acute care hospitals saw a very slight decline in volumes, specialty hospitals on the other hand present a steep increase in volumes from 2022 to 2023.*

# REHABILITATION ADMISSIONS

ACUTE	2019	2020	2021	2022	2023	% Change 2022-2023
The George Washington University Hospital	385	396	362	360	387	7.5%
MedStar National Rehabilitation Hospital	1,957	1,882	1,859	1,788	1,954	9.3%
<b>GRAND TOTAL</b>	<b>2,342</b>	<b>2,278</b>	<b>2,221</b>	<b>2,148</b>	<b>2,341</b>	<b>9.0%</b>

# SKILLED NURSING FACILITY (SNF) ADMISSIONS

ACUTE	2019	2020	2021	2022	2023	% Change 2022-2023
Providence Hospital – Ascension	167	-	-	-	-	N/A
Sibley Memorial Hospital	628	436	332	305	242	-20.7%
United Medical Center*	62	20	-	-	-	N/A
<b>ACUTE TOTAL</b>	<b>857</b>	<b>456</b>	<b>332</b>	<b>305</b>	<b>242</b>	<b>-20.7%</b>

SPECIALTY	2019	2020	2021	2022	2023	% Change 2022-2023
BridgePoint Hospital Capitol Hill	170	184	231	198	247	24.7%
BridgePoint Hospital National Harborside	95	227	219	223	203	-9.0%
<b>SPECIALTY TOTAL</b>	<b>265</b>	<b>411</b>	<b>450</b>	<b>421</b>	<b>450</b>	<b>6.9%</b>
<b>GRAND TOTAL</b>	<b>1,122</b>	<b>867</b>	<b>782</b>	<b>726</b>	<b>692</b>	<b>-4.7%</b>

*Note: United Medical Center closed their skilled nursing facility unit in April 2020 for bed adjustment purposes due to the COVID-19 surge. These beds remain closed. The impact of transitioning these patients to alternative facilities can be seen in the specialty volumes starting in 2020.*

# NEONATAL ADMISSIONS

ACUTE	2019	2020	2021	2022	2023	% Change 2022-2023
Children's National	1,206	1,067	1,121	946	862	-8.9%
The George Washington University Hospital	395	441	373	314	290	-7.6%
Howard University Hospital	76	82	55	70	49	-30.0%
MedStar Georgetown University Hospital	326	300	324	332	305	-8.1%
MedStar Washington Hospital Center	1,114	1,035	1,201	1,349	1,267	-6.1%
<b>GRAND TOTAL</b>	<b>3,117</b>	<b>2,925</b>	<b>3,074</b>	<b>3,011</b>	<b>2,773</b>	<b>-7.9%</b>

# NEWBORN ADMISSIONS

ACUTE	2019	2020	2021	2022	2023	% Change 2022-2023
The George Washington University Hospital	3,133	3,009	2,517	2,172	1,781	-18.0%
Howard University Hospital	1,146	1,170	799	888	1,153	29.8%
MedStar Georgetown University Hospital	818	790	823	732	776	6.0%
MedStar Washington Hospital Center	3,641	3,343	3,698	3,650	3,530	-3.3%
Sibley Memorial Hospital	4,225	3,705	3,702	3,797	3,768	-0.8%
<b>GRAND TOTAL</b>	<b>12,963</b>	<b>12,017</b>	<b>11,539</b>	<b>11,239</b>	<b>11,008</b>	<b>-2.1%</b>



# OBSERVATION ADMISSIONS

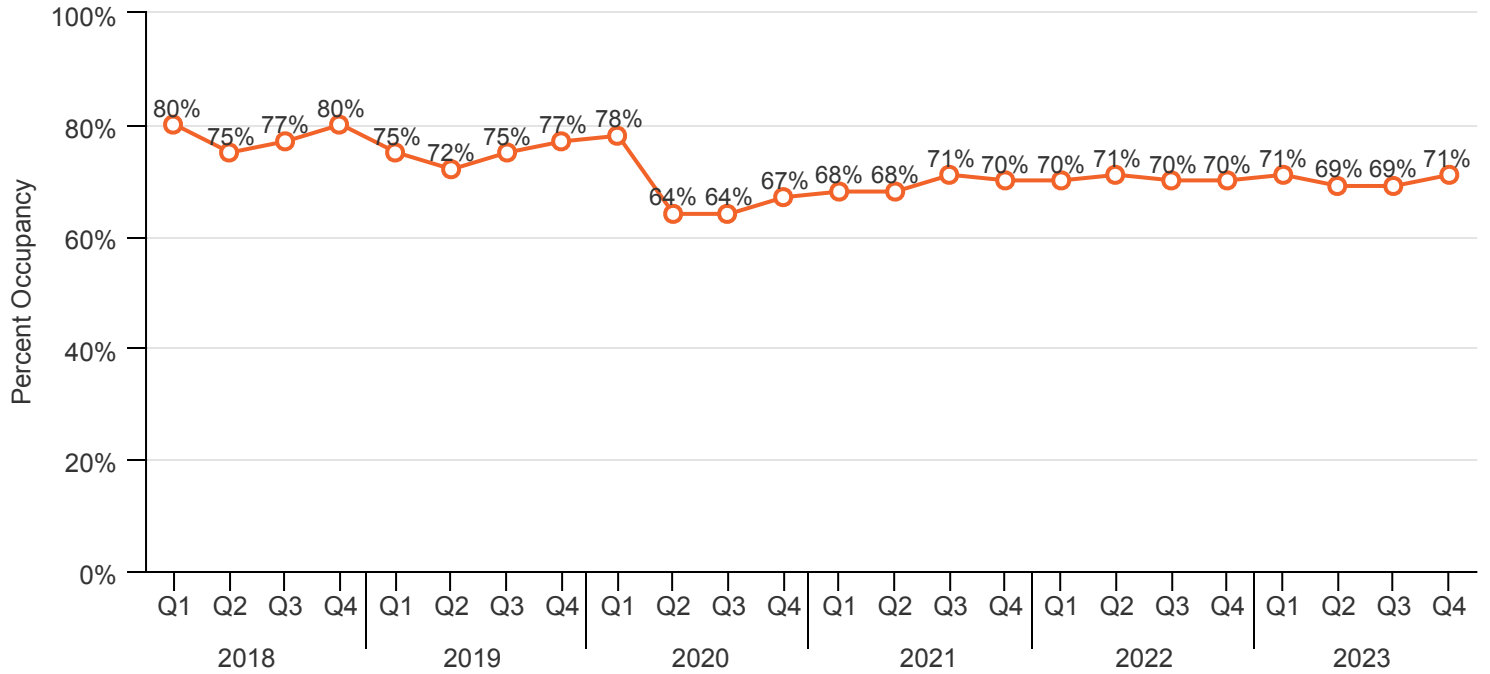
OBSERVATION ADMISSIONS	2019	2020	2021	2022	2023	% Change 2022-2023
Children's National	12,323	7,980	12,904	13,104	14,029	7.1%
The George Washington University Hospital	2,242	2,232	1,824	1,239	1,315	6.1%
Howard University Hospital	1,556	1,861	2,041	2,333	1,902	-18.5%
MedStar Georgetown University Hospital	3,557	2,368	2,530	2,958	3,339	12.9%
MedStar Washington Hospital Center	9,218	6,782	7,181	6,511	6,952	6.8%
Providence Hospital – Ascension	57	-	-	-	-	-
Sibley Memorial Hospital	3,681	3,009	3,396	3,752	4,076	8.6%
United Medical Center	2,749	2,183	1,790	1,908	2,037	6.8%
<b>GRAND TOTAL</b>	<b>35,383</b>	<b>26,415</b>	<b>31,666</b>	<b>31,805</b>	<b>33,650</b>	<b>5.8%</b>

# OBSERVATION PATIENT DAYS

OBSERVATION ADMISSIONS	2019	2020	2021	2022	2023	% Change 2022-2023
Children's National	11,792	8,060	10,281	5,353	6,545	22.3%
The George Washington University Hospital	2,021	2,104	1,581	1,104	1,199	8.6%
Howard University Hospital	2,345	2,500	2,894	5,507	5,469	-0.7%
MedStar Georgetown University Hospital	3,348	2,365	2,622	3,766	4,614	22.5%
MedStar Washington Hospital Center	15,026	10,192	11,892	10,535	9,574	-9.1%
Providence Hospital – Ascension	71	-	-	-	-	-
Sibley Memorial Hospital	4,161	4,011	4,162	4,943	5,877	18.9%
United Medical Center	5,754	3,858	3,436	4,001	4,400	10.0%
<b>GRAND TOTAL</b>	<b>44,518</b>	<b>33,090</b>	<b>36,868</b>	<b>35,209</b>	<b>37,678</b>	<b>7.0%</b>

**Note:** The impact of COVID-19 on utilization during 2020 is visible in the decreased volumes compared to 2019. That being said, observations admissions volumes have been going back up starting in 2021, and there was a 5.8% increase in admissions volumes from 2022 to 2023, an increase from the previous calendar year.

# TOTAL OCCUPANCY RATE - ALL FACILITIES



# AVERAGE OPERATING BEDS PER HOSPITAL 2023

ACUTE	Total Operating Beds	Med/Surg	OB/GYN	Peds	ICU	NICU	Psych	Other	Nursing Home Beds
Children's National	333			168	73	66	26		
The George Washington University Hospital	395	228	57		56	18	20	16	
Howard University Hospital	230	163	13		24	12	18		
MedStar Georgetown University Hospital	412	236	27	43	57	36	13		
MedStar Washington Hospital Center	762	559	28		109	24	30	12	
Sibley Memorial Hospital	407	276	50		15		20		45
United Medical Center	195	145			16		34		
<b>ACUTE TOTAL</b>	<b>2,734</b>	<b>1,607</b>	<b>175</b>	<b>211</b>	<b>350</b>	<b>156</b>	<b>161</b>	<b>28</b>	<b>45</b>
<b>PSYCHIATRIC and OTHER SPECIALTY</b>									
MedStar National Rehabilitation Hospital	137							137	
Psychiatric Institute of Washington	130						130		
Saint Elizabeths Hospital	291						291		
BridgePoint Hospital Capitol Hill	179	47			15				117
BridgePoint Hospital National Harborside	176	42			10				124
<b>SPECIALTY TOTAL</b>	<b>913</b>	<b>89</b>			<b>25</b>		<b>421</b>	<b>137</b>	<b>241</b>
<b>GRAND TOTAL</b>	<b>3,647</b>	<b>1,696</b>	<b>175</b>	<b>211</b>	<b>375</b>	<b>156</b>	<b>582</b>	<b>165</b>	<b>286</b>

**Note:** Some hospitals saw a fluctuation in the number of operating beds due to bed re-allocation related to COVID-19. Therefore, average operational beds were reported for this metric. Additionally, BridgePoint Hospital National Harborside saw an increase of nursing home beds as part of adjustments due to COVID-19 and the close of United Medical Center's SNF unit in April 2020.